

LSU
Deposit and Collateral Report
For the Quarter Ended March 31, 2018

Deposits Requiring Posting of Collateral:	Demand Deposit Sweep/MMA Repurchase	Certificates of Deposit	Total Deposits in Financial Institutions	Collateral (1)
LSU A&M, LSU Alexandria, LSU Eunice, LSU Shreveport, and LSU Health New Orleans				
Chase - LSU, Health Plan Premium	\$ 73,288,644		\$ 73,288,644	\$ 125,000,000
Cottonport Bank-LSU Ag Center	500,000		500,000	250,000
Capital One - LSU-A	2,292,603		2,292,603	2,292,603
St. Landry Bank - LSU-E	431,164		431,164	1,491,218
Campus Federal Credit Union - LSU-S		\$ 100,237	100,237	250,000
Capital One (Hibernia National Bank) - LSU-S	50,815,539		50,815,539	51,398,024
Chase-HSCNO	12,275,640	18,600	12,294,240	25,900,000
Total	\$ 139,603,590	\$ 118,837	\$ 139,722,427	\$ 206,581,845
LSU Health Shreveport				
US Bank	\$ 4,388		\$ 4,388	\$ 250,000
Regions Bank-Shreveport	\$ 67,708,171		\$ 67,708,171	\$ 77,955,366
Regions Bank-Shreveport Endowment Fds	8,723,520		8,723,520	-
Total	\$ 76,436,079	\$ -	\$ 76,436,079	\$ 78,205,366
LSU Health Care Services Division				
JP Morgan Chase (HCSD)	\$ 78,090,222		\$ 78,090,222	\$ 82,291,229
Capital One (MCLNO Trust Fund)	4,183,308		4,183,308	4,261,795
Total	\$ 82,273,530	\$ -	\$ 82,273,530	\$ 86,553,024
Total Requiring Collateral	\$ 298,313,199	\$ 118,837	\$ 298,432,036	\$ 371,340,235
Deposits In Trust or Federal Obligations Not Requiring Collateral				
Federated Money Markets	\$ 17,472,657		\$ 17,472,657	
Federated Funds-Treas. Oblig. (2)	733		733	
Total	\$ 17,473,390	\$ -	\$ 17,473,390	
Total Deposits	\$ 315,786,589	\$ 118,837	\$ 315,905,426	

(1) Collateral amounts include FDIC coverage of \$250,000 on Demand Deposits, \$250,000 on CD's and \$250,000 by the National Credit Union Share Insurance Fund on deposits with Campus Federal Credit Union.

(2) One Group & Federated Funds are no-load, open ended mutual funds investing in U.S. Treasury obligations.

LSU
Investment Summary
For the Quarter Ended March 31, 2018

Fund Description	As of 7/1/2017			As of 9/30/2017			As of 12/31/2017			As of 3/31/2018			As of 06/30/2018	
	Value	Cost	Market Value	Cost	Market Value	Cost	Market Value	Cost	Market Value	Cost	Market Value	Cost	Market Value	
Current Funds														
Cash/Sweeps	\$231,313,374	\$254,409,898	\$254,409,898	\$278,676,667	\$278,676,667	\$285,406,371	\$285,406,371	\$0	\$0					
Money Market Accounts/Repos (A)	\$142	\$7,174,020	\$7,174,020	\$6,263,816	\$6,263,816	\$2,582,395	\$2,582,395	\$0	\$0					
Certificates of Deposit	\$100,225	\$100,225	\$100,225	\$100,237	\$100,237	\$100,237	\$100,237	\$0	\$0					
Treasury Notes	\$12,613,599	\$12,516,556	\$12,609,115	\$7,715,942	\$7,730,758	\$6,466,011	\$6,439,380	\$0	\$0					
CMO's	\$169,881	\$2,327,632	\$2,307,161	\$6,543,452	\$6,468,000	\$6,496,647	\$6,284,588	\$0	\$0					
Agency Securities (B)	\$129,722,977	\$167,108,996	\$164,147,973	\$136,941,637	\$134,126,769	\$129,778,067	\$125,181,973	\$0	\$0					
Mortgaged Backed Securities	\$29,240,979	\$27,863,351	\$27,424,685	\$23,788,080	\$23,315,681	\$22,559,039	\$21,936,771	\$0	\$0					
Equity Securities (C)	\$84,239	\$0	\$79,661	\$0	\$77,533	\$0	\$70,258	\$0	\$0					
Bond Mutual Funds	\$43,841,262	\$46,697,531	\$43,899,237	\$46,697,531	\$44,092,490	\$46,697,531	\$43,694,390	\$0	\$0					
Municipal Bonds (E)	\$89,828,023	\$101,113,010	\$98,236,250	\$95,071,730	\$91,696,849	\$98,612,502	\$94,124,565	\$0	\$0					
Corporate Bonds (D)	\$141,247,762	\$188,925,256	\$188,635,119	\$151,118,157	\$149,311,900	\$156,522,401	\$150,932,391	\$0	\$0					
Total	\$678,162,463	\$808,236,475	\$799,023,344	\$752,917,249	\$741,860,700	\$755,221,201	\$736,753,319	\$0	\$0					
Endowment Funds														
Cash/Sweeps	\$6,883,023	\$6,880,687	\$6,880,687	\$8,429,003	\$8,429,003	\$8,723,520	\$8,723,520	\$0	\$0					
Money Market Accounts/Repos (A)	\$175	\$3,659,076	\$3,659,076	\$668,995	\$668,995	\$407,302	\$407,302	\$0	\$0					
Certificates of Deposit	\$18,600	\$18,600	\$18,600	\$18,600	\$18,600	\$18,600	\$18,600	\$0	\$0					
Agency Securities (B)	\$5,930,359	\$4,168,505	\$3,971,834	\$3,029,175	\$2,951,815	\$2,509,075	\$2,394,365	\$0	\$0					
Mortgaged Backed Securities	\$998,929	\$780,920	\$769,452	\$2,830,592	\$2,791,199	\$2,645,919	\$2,575,098	\$0	\$0					
Equity Securities (C)	\$9,769,145	\$5,666,168	\$10,104,449	\$5,666,168	\$10,612,278	\$5,666,168	\$10,482,271	\$0	\$0					
Mutual Funds	\$53,956,268	\$50,429,841	\$55,246,699	\$48,460,320	\$53,627,499	\$47,418,530	\$51,530,223	\$0	\$0					
Municipal Bonds (E)	\$2,287,741	\$2,789,725	\$2,777,143	\$3,275,153	\$3,241,436	\$3,254,999	\$3,178,023	\$0	\$0					
Corporate Bonds (D)	\$6,736,080	\$6,852,795	\$6,707,128	\$8,120,150	\$8,153,865	\$9,329,143	\$9,123,910	\$0	\$0					
Total	\$86,580,320	\$81,246,317	\$90,135,068	\$80,498,156	\$90,494,690	\$79,973,256	\$88,433,312	\$0	\$0					
Other Funds														
Cash/Sweeps	\$5,165,268	\$3,684,891	\$3,684,891	\$4,029,716	\$4,029,716	\$4,183,308	\$4,183,308	\$0	\$0					
Money Market Accounts/Repos (A)	\$43,905,798	\$18,450,982	\$18,450,982	\$23,432,725	\$23,432,725	\$14,482,960	\$14,482,960	\$0	\$0					
Agency Securities (B)	\$866,895	\$839,273	\$865,976	\$839,273	\$858,985	\$839,273	\$844,469	\$0	\$0					
Equity Securities (C)	\$400,421	\$0	\$406,621	\$0	\$414,854	\$0	\$370,066	\$0	\$0					
Total	\$50,344,786	\$22,977,843	\$23,411,167	\$28,303,483	\$28,738,049	\$19,506,274	\$19,881,536	\$0	\$0					
Grand Total	\$815,087,569	\$912,460,635	\$912,569,579	\$861,718,888	\$861,093,439	\$854,700,731	\$845,068,167	\$0	\$0					
Deposits in Financial Institutions														
Total Cash/Sweeps/MMA/Repos	\$287,267,780	\$294,259,554	\$294,259,554	\$321,500,922	\$321,500,922	\$315,785,856	\$315,785,856	\$0	\$0					
Total Certificates of Deposit	\$118,825	\$118,825	\$118,825	\$118,837	\$118,837	\$118,837	\$118,837	\$0	\$0					
US Gov Related Securities	\$6,404	\$2,697	\$2,697	\$1,769	\$1,769	\$733	\$733	\$0	\$0					
Total Deposits	\$287,393,009	\$294,381,076	\$294,381,076	\$321,621,528	\$321,621,528	\$315,905,426	\$315,905,426	\$0	\$0					
Other Investments														
Treasury Notes	\$12,613,599	\$12,516,556	\$12,609,115	\$7,715,942	\$7,730,758	\$6,466,011	\$6,439,380	\$0	\$0					
CMO's	\$169,881	\$2,327,632	\$2,307,161	\$6,543,452	\$6,468,000	\$6,496,647	\$6,284,588	\$0	\$0					
Agency Securities (B)	\$136,520,231	\$172,116,774	\$168,985,783	\$140,810,085	\$137,937,569	\$133,126,415	\$128,420,807	\$0	\$0					
Mortgaged Backed Securities	\$30,239,908	\$28,644,271	\$28,194,137	\$26,618,672	\$26,106,880	\$25,204,958	\$24,511,869	\$0	\$0					
Equity Securities (C)	\$10,253,805	\$5,666,168	\$10,590,731	\$5,666,168	\$11,104,665	\$5,666,168	\$10,922,595	\$0	\$0					
Bond Mutual Funds	\$43,841,262	\$46,697,531	\$43,899,237	\$46,697,531	\$44,092,490	\$46,697,531	\$43,694,390	\$0	\$0					
Mutual Funds	\$53,956,268	\$50,429,841	\$55,246,699	\$48,460,320	\$53,627,499	\$47,418,530	\$51,530,223	\$0	\$0					
Municipal Bonds (E)	\$92,115,764	\$103,902,735	\$101,013,393	\$98,346,883	\$94,938,285	\$101,867,501	\$97,302,588	\$0	\$0					
Corporate Bonds (D)	\$147,983,842	\$195,778,051	\$195,342,247	\$159,238,307	\$157,465,765	\$165,851,544	\$160,056,301	\$0	\$0					
Total Other	\$527,694,560	\$618,079,559	\$618,188,503	\$540,097,360	\$539,471,911	\$538,795,305	\$529,162,741	\$0	\$0					
Grand Total	\$815,087,569	\$912,460,635	\$912,569,579	\$861,718,888	\$861,093,439	\$854,700,731	\$845,068,167	\$0	\$0					
LSU Paid Campuses														
Current Funds														
Cash/Sweeps	\$101,409,479	\$129,882,723	\$129,882,723	\$130,979,944	\$130,979,944	\$139,603,590	\$139,603,590	\$0	\$0					
Money Market Accounts/Repos (A)	\$24	\$7,174,014	\$7,174,014	\$6,263,799	\$6,263,799	\$2,582,330	\$2,582,330	\$0	\$0					
Certificates of Deposit	\$100,225	\$100,225	\$100,225	\$100,237	\$100,237	\$100,237	\$100,237	\$0	\$0					
Treasury Notes	\$11,614,639	\$11,516,556	\$11,609,785	\$5,981,106	\$5,997,580	\$5,981,106	\$5,955,078	\$0	\$0					
CMO's	\$169,881	\$2,327,632	\$2,307,161	\$6,543,452	\$6,468,000	\$6,496,647	\$6,284,588	\$0	\$0					
Agency Securities (B)	\$123,649,583	\$161,499,951	\$158,574,725	\$132,085,828	\$129,322,071	\$124,922,679	\$120,407,427	\$0	\$0					
Mortgaged Backed Securities	\$28,799,935	\$27,531,509	\$27,100,864	\$23,516,869	\$23,050,666	\$22,308,631	\$21,693,160	\$0	\$0					
Equity Securities (C)	\$84,239	\$0	\$79,661	\$0	\$77,533	\$0	\$70,258	\$0	\$0					
Bond Mutual Funds	\$43,841,262	\$46,697,531	\$43,899,237	\$46,697,531	\$44,092,490	\$46,697,531	\$43,694,390	\$0	\$0					
Municipal Bonds (E)	\$73,883,074	\$83,577,411	\$80,788,233	\$76,573,431	\$73,384,735	\$79,658,667	\$75,430,670	\$0	\$0					
Corporate Bonds (D)	\$139,989,782	\$187,661,619	\$187,370,524	\$150,866,032	\$149,060,025	\$156,270,276	\$150,680,203	\$0	\$0					
Total	\$523,542,123	\$657,969,171	\$648,887,152	\$579,608,229	\$568,797,080	\$584,621,694	\$566,501,931	\$0	\$0					
Endowment Funds														
Money Market Accounts/Repos (A)	\$175	\$3,659,076	\$3,659,076	\$668,995	\$668,995	\$407,302	\$407,302	\$0	\$0					
Certificates of Deposit	\$18,600	\$18,600	\$18,600	\$18,600	\$18,600	\$18,600	\$18,600	\$0	\$0					
Agency Securities (B)	\$5,930,359	\$4,168,505	\$3,971,834	\$3,029,175	\$2,951,815	\$2,509,075	\$2,394,365	\$0	\$0					
Mortgaged Backed Securities	\$998,929	\$780,920	\$769,452	\$2,830,592	\$2,791,199	\$2,645,919	\$2,575,098	\$0	\$0					
Equity Securities (C)	\$9,754,139	\$5,658,518	\$10,089,628	\$5,658,518	\$10,596,755	\$5,658,518	\$10,467,799	\$0	\$0					
Municipal Bonds	\$2,287,741	\$2,789,725	\$2,777,143	\$3,275,153	\$3,241,436	\$3,254,999	\$3,178,023	\$0	\$0					
Corporate Bonds (D)	\$6,736,080	\$6,852,795	\$6,707,128	\$8,120,150	\$8,153,865	\$9,329,143	\$9,123,910	\$0	\$0					
Total	\$25,726,023	\$23,928,139	\$27,992,861	\$23,601,183	\$28,422,665	\$23,823,556	\$28,165,097	\$0	\$0					
Other Funds														
Cash/Sweeps	286,025													
Money Market Accounts/Repos (A)	\$35,401,325	\$9,925,778	\$9,925,778	\$14,887,455	\$14,887,455	\$5,911,617	\$5,911,617	\$0	\$0					
Agency Securities (B)	\$866,895	\$839,273	\$865,976	\$839,273	\$858,985	\$839,273	\$844,469	\$0	\$0					
Total	\$36,554,245	\$10,765,051	\$10,791,754	\$15,726,728	\$15,746,440	\$6,750,890	\$6,756,086	\$0	\$0					
Grand Total	\$585,822,391	\$692,662,361												

LSU
Investment Summary
For the Quarter Ended March 31, 2018

Fund Description	As of 7/1/2017			As of 9/30/2017			As of 12/31/2017			As of 3/31/2018		As of 06/30/2018	
	Value	Cost	Market Value	Cost	Market Value	Cost	Market Value	Cost	Market Value	Cost	Market Value		
LSU Health Shreveport													
Current Funds													
Cash/Sweeps S.	\$57,669,013	\$53,477,458	\$53,477,458	\$67,313,752	\$67,313,752	\$67,712,559	\$67,712,559						
Cash/Sweeps	\$57,669,013	\$53,477,458	\$53,477,458	\$67,313,752	\$67,313,752	\$67,712,559	\$67,712,559			\$0	\$0		
Money Market Accounts/Repos (A)	\$118	\$6	\$6	\$17	\$17	\$65	\$65						
Treasury Notes (B)	\$998,960	\$1,000,000	\$999,330	\$1,734,836	\$1,733,178	\$484,905	\$484,302						
Agency Securities (B)	\$6,073,394	\$5,609,045	\$5,573,248	\$4,855,809	\$4,804,698	\$4,855,388	\$4,774,546						
Mortgaged Backed Securities (B)	\$441,044	\$331,842	\$323,821	\$271,211	\$265,015	\$250,408	\$243,611						
Municipal Bonds (E)	\$15,944,949	\$17,535,599	\$17,448,017	\$18,498,299	\$18,312,114	\$18,953,835	\$18,693,895						
Corporate Bonds (D)	\$1,257,980	\$1,263,637	\$1,264,595	\$252,125	\$251,875	\$252,125	\$252,188						
Total	\$82,385,458	\$79,217,587	\$79,086,475	\$92,926,049	\$92,680,649	\$92,509,285	\$92,161,166			\$0	\$0		
Endowment Funds													
Cash/Sweeps	\$6,883,023	\$6,880,687	\$6,880,687	\$8,429,003	\$8,429,003	\$8,723,520	\$8,723,520						
Equity Securities (C)	\$15,006	\$7,650	\$14,821	\$7,650	\$15,523	\$7,650	\$14,472						
Mutual Funds	\$53,956,268	\$50,429,841	\$55,246,699	\$48,460,320	\$53,627,499	\$47,418,530	\$51,530,223						
Total	\$60,854,297	\$57,318,178	\$62,142,207	\$56,896,973	\$62,072,025	\$56,149,700	\$60,268,215			\$0	\$0		
Grand Total	\$143,239,755	\$136,535,765	\$141,228,682	\$149,823,022	\$154,752,674	\$148,658,985	\$152,429,381			\$0	\$0		
LSU HCSD													
Current Funds													
Cash/Sweeps	\$72,234,882	\$71,049,717	\$71,049,717	\$80,382,971	\$80,382,971	\$78,090,222	\$78,090,222						
Total	\$72,234,882	\$71,049,717	\$71,049,717	\$80,382,971	\$80,382,971	\$78,090,222	\$78,090,222			\$0	\$0		
Other Funds													
Cash/Sweeps	\$4,879,243	\$3,684,891	\$3,684,891	\$4,029,716	\$4,029,716	\$4,183,308	\$4,183,308						
Money Market Accounts/Repos (A)	\$8,504,473	\$8,525,204	\$8,525,204	\$8,545,270	\$8,545,270	\$8,571,343	\$8,571,343						
Equity Securities (C)	\$400,421		\$406,621		\$414,854		\$370,066						
US Gov Related Securities	\$6,404	\$2,697	\$2,697	\$1,769	\$1,769	\$733	\$733						
Total	\$13,790,541	\$12,212,792	\$12,619,413	\$12,576,755	\$12,991,609	\$12,755,384	\$13,125,450			\$0	\$0		
Grand Total	\$86,025,423	\$83,262,509	\$83,669,130	\$92,959,726	\$93,374,580	\$90,845,606	\$91,215,672			\$0	\$0		
System Total	\$815,087,569	\$912,460,635	\$912,569,579	\$861,718,888	\$861,093,439	\$854,700,731	\$845,068,167			\$0	\$0		

* Negative balance in the cash/Sweeps section of the current funds does not represent an actual negative bank balance, rather it represents a timing difference of the allocation of the current funds.

** Small endowment funds at LSUS were moved to the LSUS Foundation to accommodate Workday

*** LSU Paid Campuses include the following: LSU, LSU Ag Center, LSUA, LSUE, LSUS, LSU Health New Orleans, and the LSU Pennington Biomedical Research Center

BENCHMARK NOTES (Example Only)

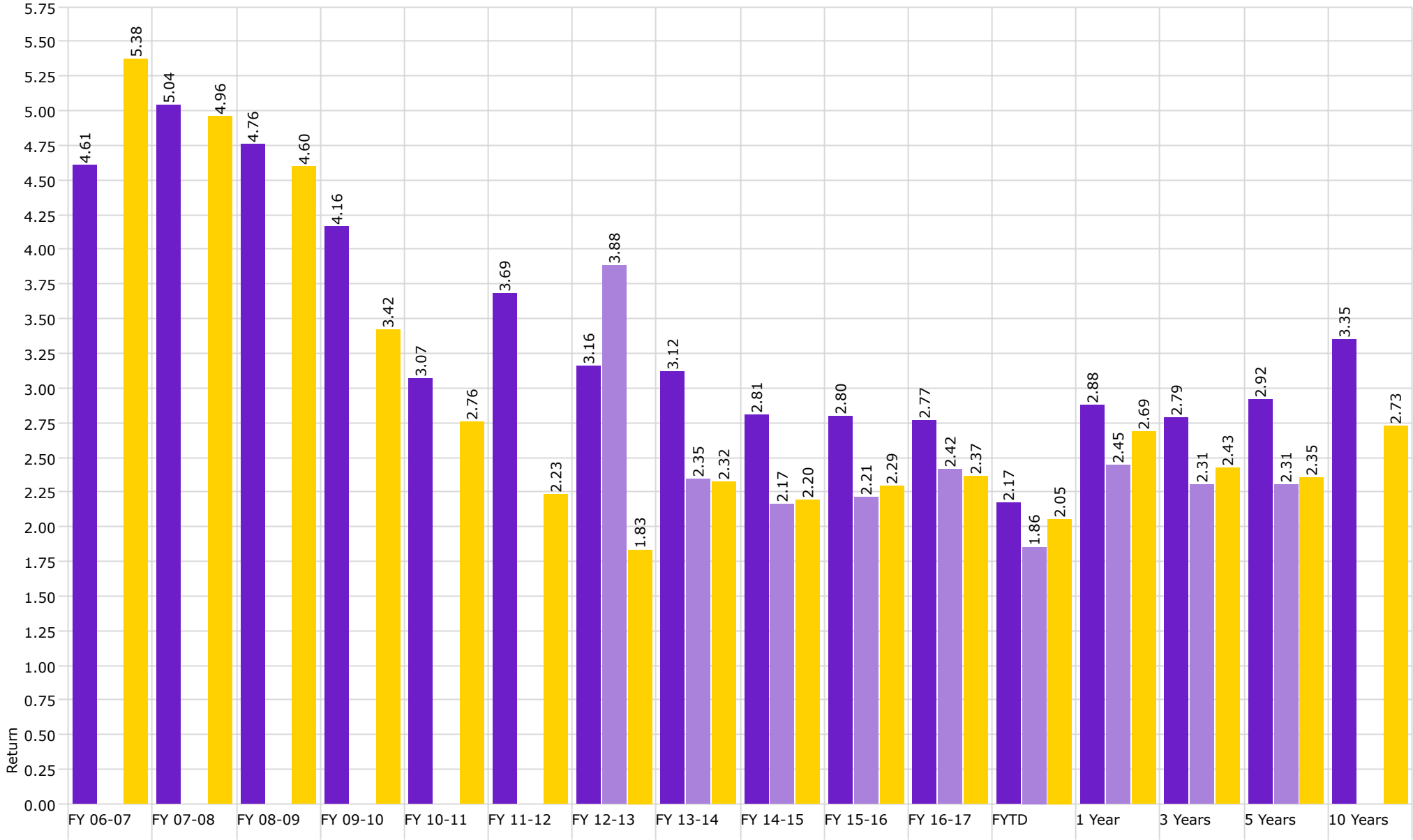
- (A) Benchmarked against 90 day T-Bill
- (B) Benchmarked against Barclay's US Agg Bond TR USD
- (C) US equities benchmarked against Russell 3000 and international against MSCI emerging market
- (D) Benchmarked against XYZ
- (E) Benchmarked against XYZ

Disclaimer: Pursuant to PM-9, corporate bonds/notes only available for investment beginning 7-1-2011
Louisiana law provides for restrictions on maturity and allocation and may effect benchmark comparison:



Investment Management Program Non Endowed Accounts **Realized Yield**

As of 3/31/2018



■ Non Endowed

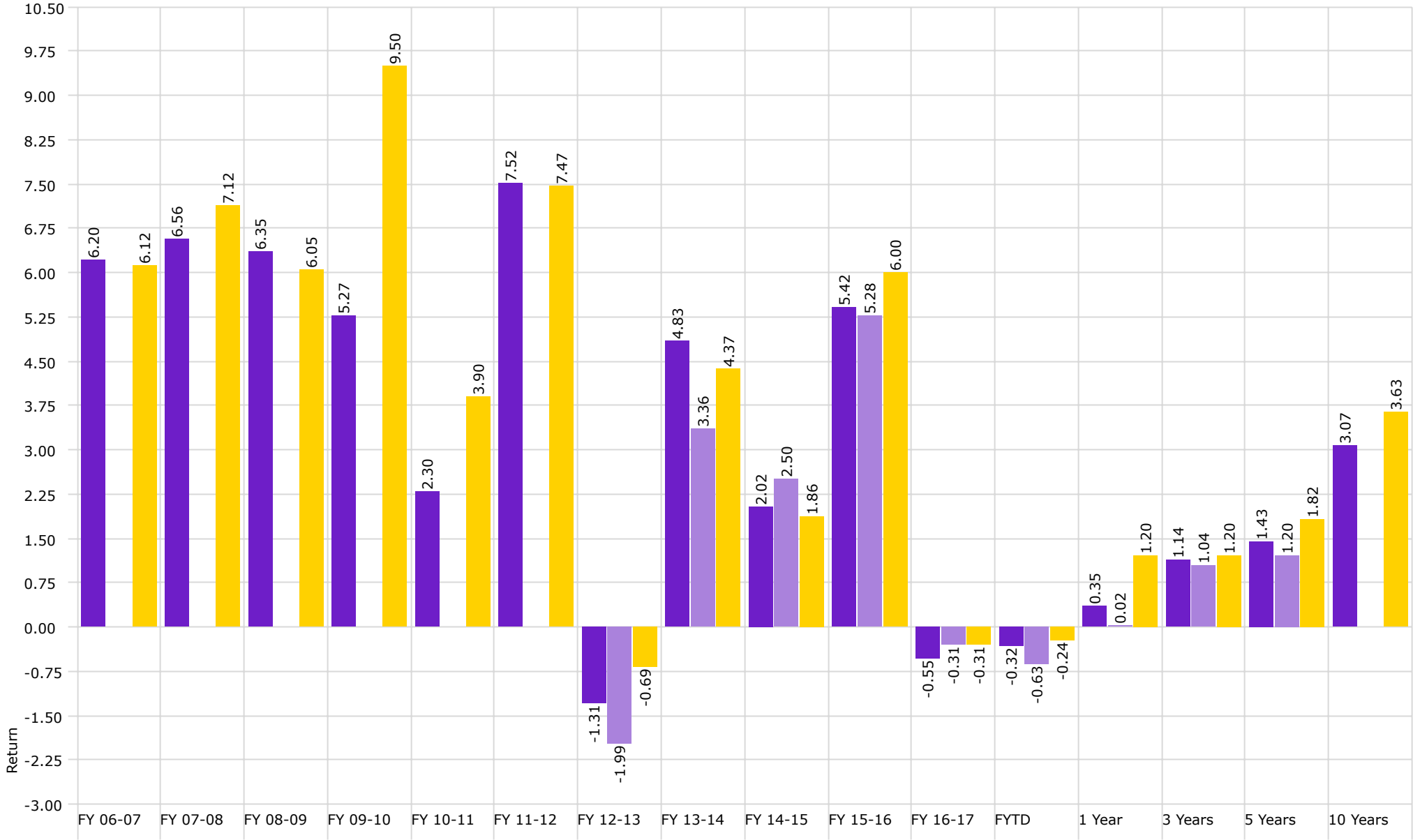
■ Health Plan

■ Barclays Aggregate Bond Index



Investment Management Program Non Endowed Accounts **Total Return**

As of 3/31/2018



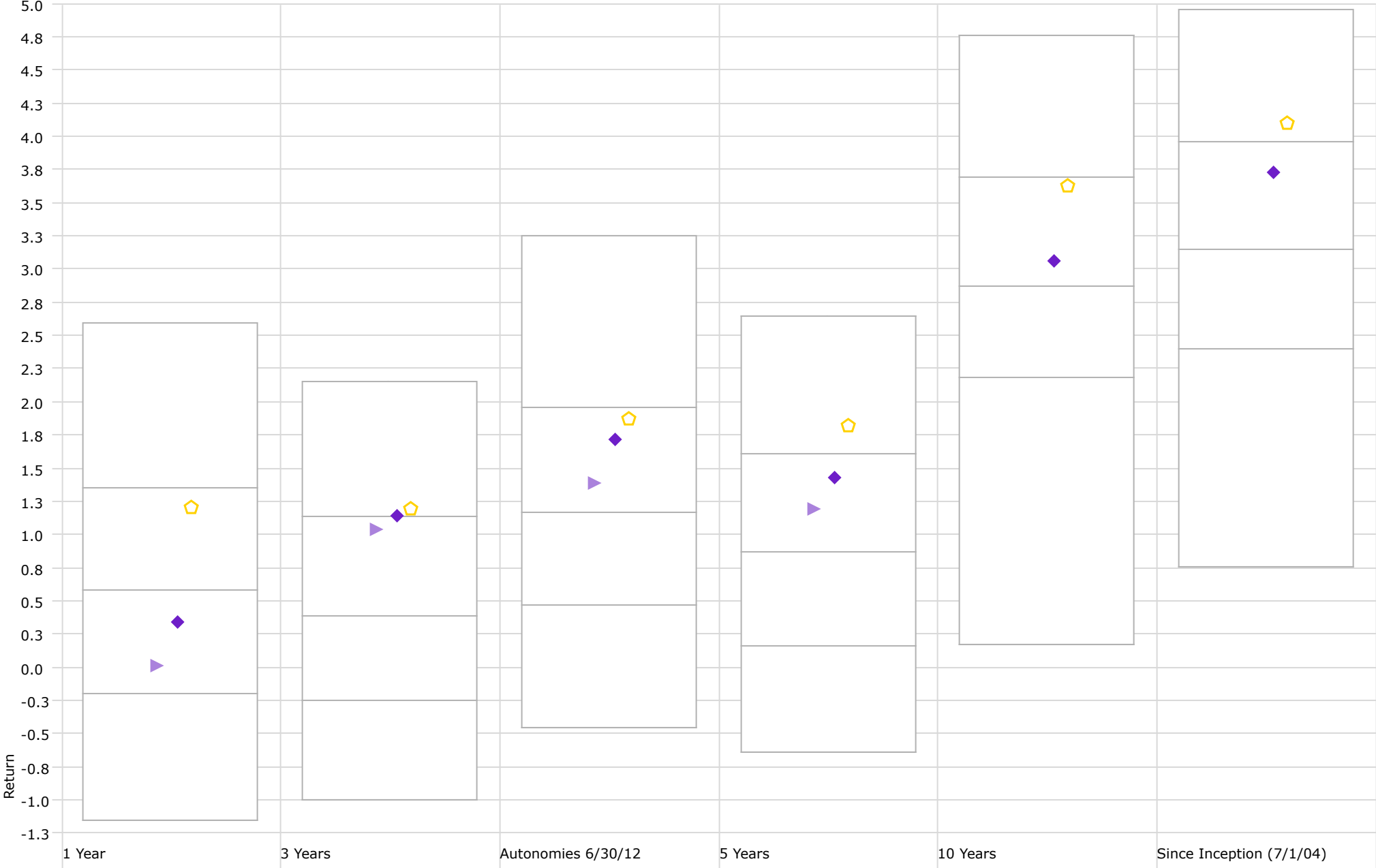
■ Non Endowed

■ Health Plan

■ Barclays Aggregate Bond Index

Performance Relative to Peer Group (Total Return)

Peer Group (5-95%): All Managed Investments - U.S. - Intermediate-Term Bond



◆ Non Endowed

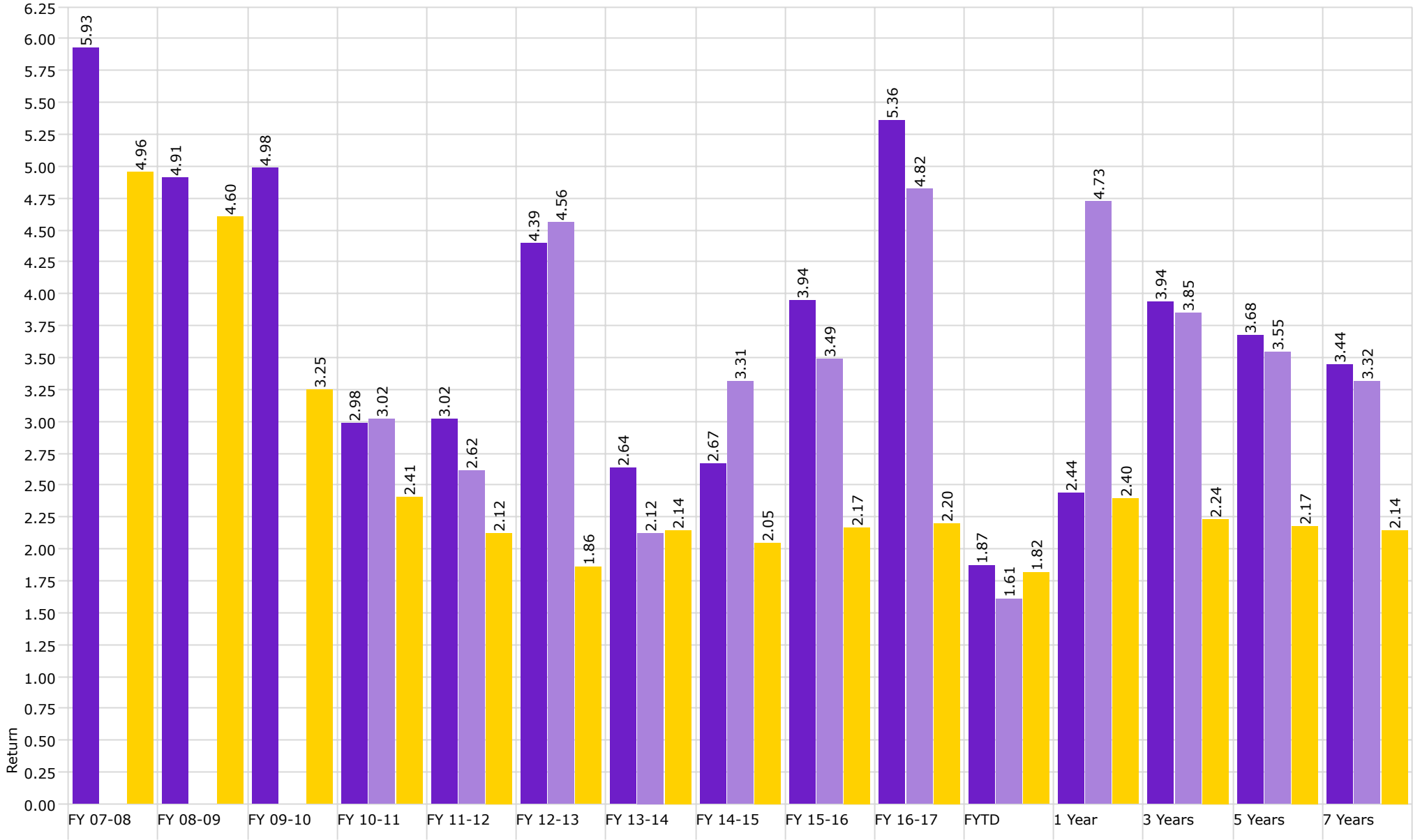
▶ Health Plan

⬠ Barclays Aggregate Bond Index



Investment Management Program Endowed Accounts **Realized Yield**

As of 3/31/2018



Endowment

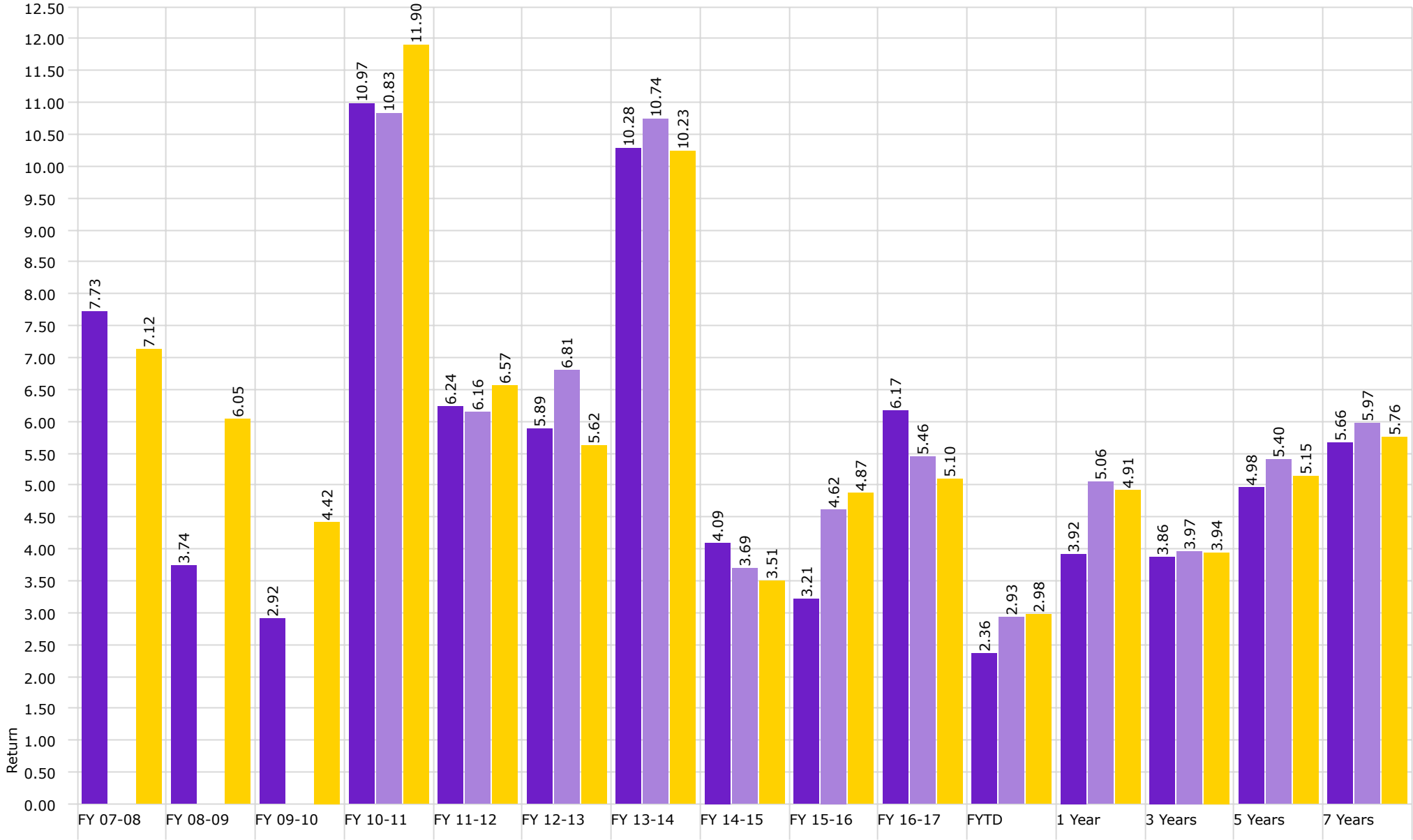
Osher

Endowed Benchmark



Investment Management Program Endowed Accounts **Total Return**

As of 3/31/2018



Endowment

Osher

Endowed Benchmark