
LSU BOARD OF SUPERVISORS MEETING

Board Room, University Administration Building

3810 W Lakeshore Dr, Baton Rouge, LA 70808

October 10, 2024 | 12:30 p.m. CT

- I. Call to Order and Roll Call
- II. Invocation and Pledge of Allegiance
- III. Public Comment
- IV. Committee Meetings
 - A. Research and Agriculture Extension Committee
 1. Robotic Concrete Construction: Transforming Louisiana One Layer at Time
 - B. Academic Committee
 1. Request from LSU A&M for Initial Designation of the Equine Health and Sports Performance Center of Excellence
 2. Request to Amend Article II, Section 6 of the Regulations of the Board from Louisiana State University
 3. Request to Amend Article III, Section 1. of the Regulations of the Board from Louisiana State University
 4. Consent Agenda
 - a. Request from LSU Health Sciences Center - Shreveport for Continued Authorization of the Center for Brain Health
 - b. Request from LSU A&M to Convert the Paul M. Horton Chair in Chemical Engineering to Professorships
 - C. Finance Committee
 1. Request to Approve Differential Tuition and Mandatory Fee Amounts Pursuant to the Authority Granted in Act 790 of the 2024 Regular Session of the Louisiana Legislature
 - D. Property and Facilities Committee
 1. Request from LSU A&M to Approve an Act 959 Project for the Headhouse Renovations
 2. Request from LSUA Foundation to Accept Donation of Vacant Lot at 925 Jackson Street, Alexandria, Rapides Parish, Louisiana
 3. Request from LSU Health Sciences Center - Shreveport to Approve a Project to Expand Research Space
 4. Request from LSU to Approve the Schematic Design for the Julian T. White Hall
 - E. Athletics Committee
 1. Request from LSU Athletics to Increase Softball Ticket Prices and Tradition Fund
 - F. Risk Management Committee (9:00 a.m., Board Conference Room 104A)

The Board or its Committees may enter into Executive Session in accordance with the provisions of LA R.S. 42:17xs

The Board or its Committees may enter into Executive Session in accordance with the provisions of LA R.S. 42:17

1. LSU Health Sciences Center - Shreveport Accreditation Update
2. FY 2024 Annual Report
- V. Reconvene Board Meeting
- VI. Meeting Minutes
 - A. Approval of Meeting Minutes from the September 5, 2024 Board Professional Development
 - B. Approval of Meeting Minutes from the September 5, 2024 Executive Committee Meeting
 - C. Approval of Meeting Minutes from the September 5, 2024 Healthcare and Medical Education Committee Meeting
 - D. Approval of Meeting Minutes from the September 6, 2024 Board Meeting
- VII. Personnel Actions Requiring Board Approval
- VIII. Approval of Committee Recommendations
- IX. *Resolution Regarding Impact of Student for Fair Admissions v. Harvard et al.*
- X. Reports to the Board
 - A. Facility Summary Reports
 1. Transfers of Title Immovable Property
 2. Approval of Requests for Timber Sales Report
 3. Capital Improvements Projects above \$175,000 Report
 4. Design Contracts Report
 5. Foundation Construction Related Agreements
 6. Grants of Mineral Rights
 7. Other Agreements and Approval Requests
 8. PM-60 Projects \$75,000 to \$175,000 Reports
 9. Property Leases Report
 10. Schematic Design Report
 11. Servitudes Report
- XI. Reports from Faculty Advisors and Staff Advisors
- XII. President's Report
- XIII. Chair's Report
- XIV. Adjournment

The Board or its Committees may enter into Executive Session in accordance with the provisions of LA R.S. 42:17

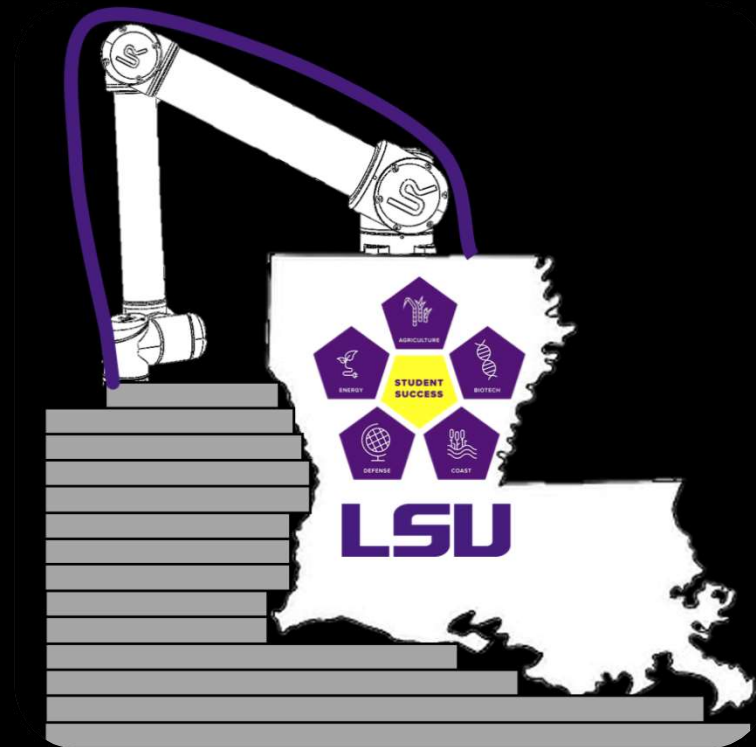


Board of Supervisors

RESEARCH AND AGRICULTURE EXTENSION COMMITTEE

Robotic Concrete Construction: Transforming Louisiana One Layer at a Time

Ali Kazemian, Assistant Professor
Bert S Turner Department of Construction Management
College of Engineering, Louisiana State University



Concrete Construction

- > Same fundamental methods and principals
- > \$2 trillion construction industry in the U.S.



Concrete Construction

> Dangerous, labor-intensive, slow, and expensive



Robotic Construction 3D Printing

- > Formwork-free concrete construction using robots
- > Layer-by-layer deposition of specialized concrete
- > Building faster, cheaper, and safer!



Challenges for Industry Adoption

- > Not reliable, requires human supervision
- > Trust in new technology



rəcast lab @ LSU CM

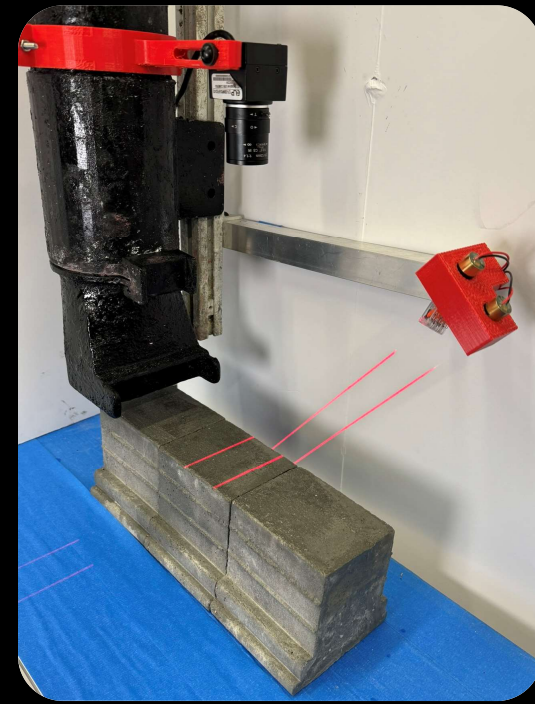
> Vision:

Advancing Robotic Construction Toward
Higher Levels of Automation and Robustness

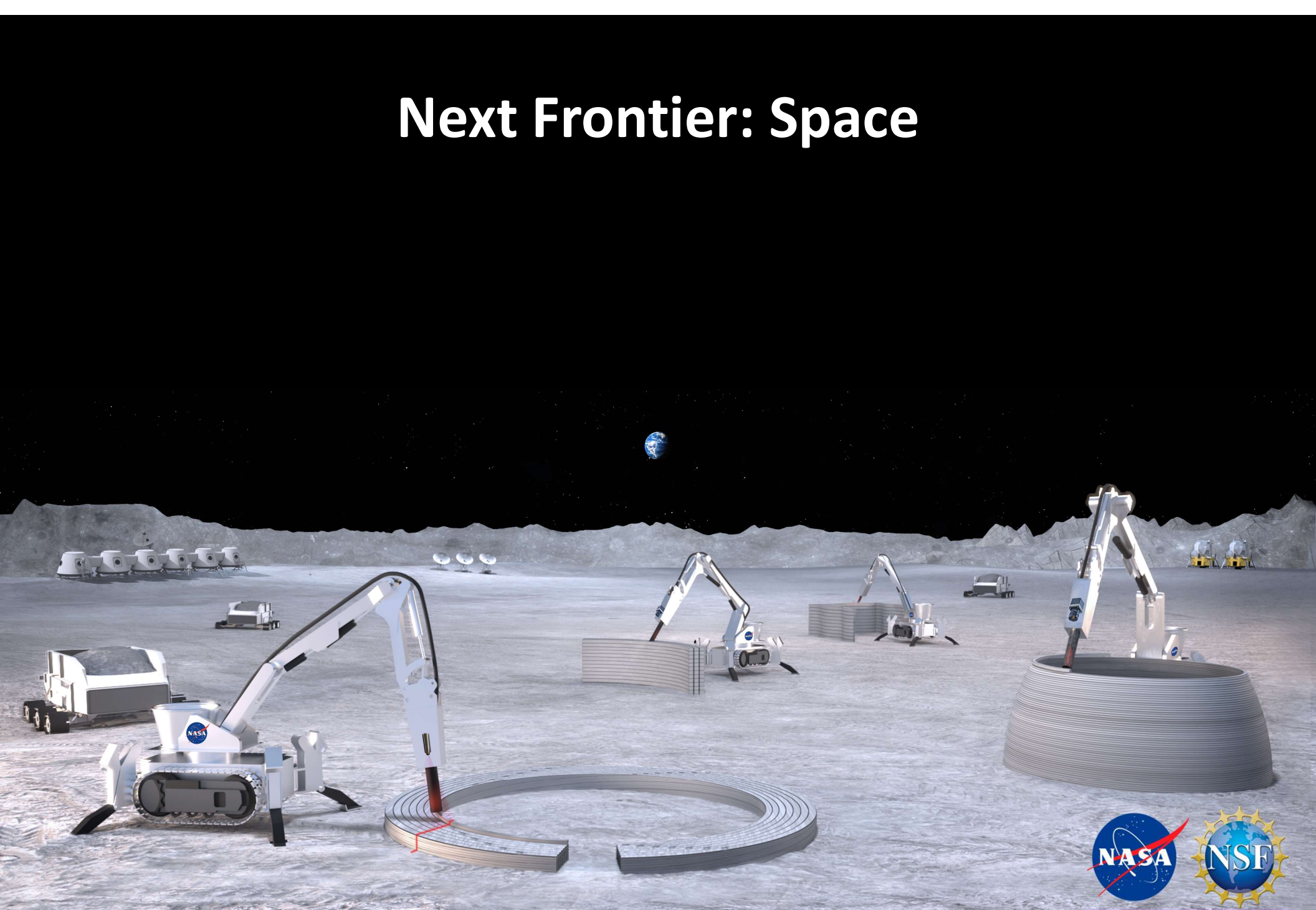


Automated Quality Control reacast lab @ LSU CM

- > Automated inspection using advanced sensors and algorithms
- > In-process real-time dimensional measurements
- > Artificial Intelligence (AI) predicts the strength (95% accuracy)



Next Frontier: Space

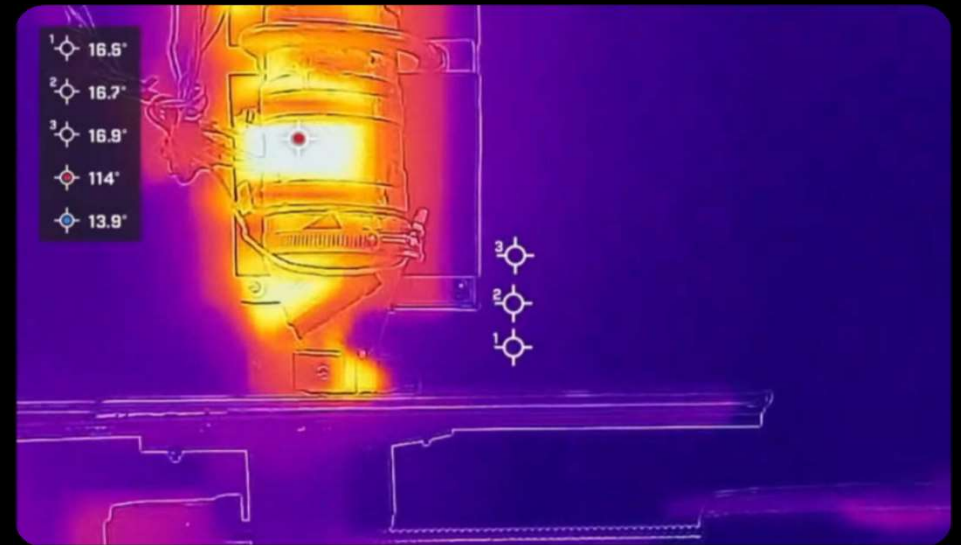


Extraterrestrial Robotic Construction

> Alternative waterless robotic construction paradigms



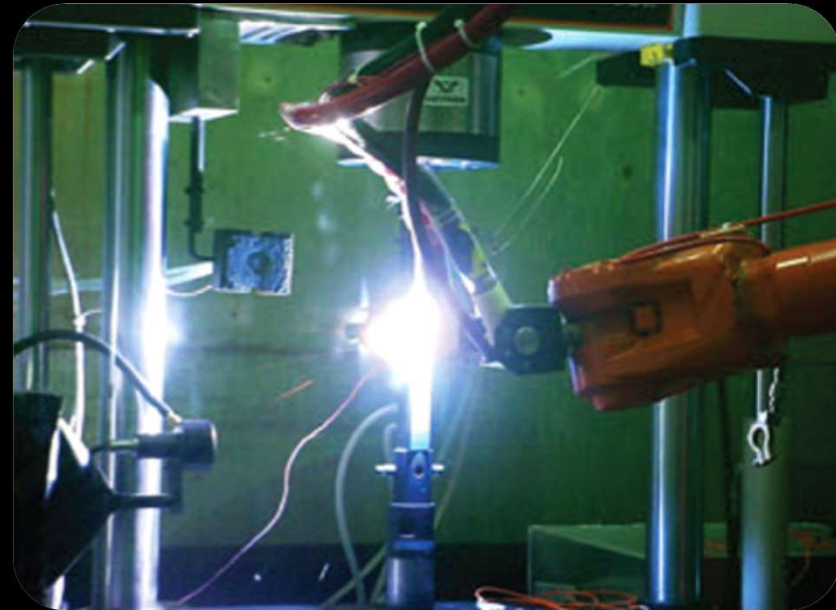
Visible light camera



Thermal camera view

Extraterrestrial Robotic Construction

> LSU-NASA joint effort: large-scale implementation



Plasma torch test
extreme heat simulation for landing pads





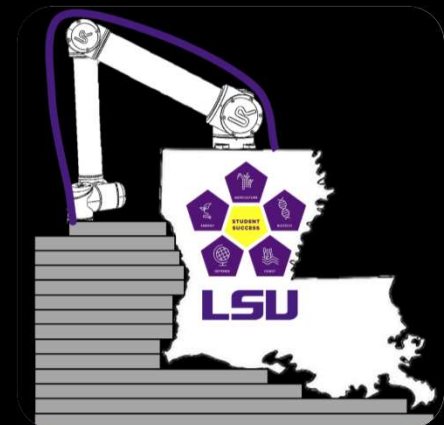
Thank you!

LSU

College of

Engineering

**Bert S. Turner Department
of Construction Management**



LSU



Board of Supervisors

ACADEMIC COMMITTEE



Board of Supervisors

Request from LSU A&M for Initial Designation of the Equine Health and Sports Performance Center of Excellence

Date: October 10, 2024

1. Bylaw Citation

Pursuant to Article VII, Section 1, Paragraph B of the Bylaws of the Louisiana State University Board of Supervisors, this matter is a significant board matter.

- B. The Board shall approve any new academic program resulting in the awarding of a degree, certificate, or credential, as well as any changes of degree designation or termination of degree programs. The Board shall approve any new institution, department, research center, or institute, or required reauthorization of such.

2. Summary of Matter

The Louisiana State University School of Veterinary Medicine (LSU Vet Med) Equine Health Studies Program seeks initial designation as the Equine Health and Sports Performance Center of Excellence. The Equine Health Studies Program specializes in understanding and improving equine performance and managing diseases through a multidisciplinary approach. This includes clinical services, research on disease causes, diagnostics, and treatments, and a commitment to educating veterinary students and professionals. The Equine Health Studies Program also seeks to share valuable knowledge with horse owners both in Louisiana and across the country, ensuring that the advancements in equine health reach a broad audience.

Through the pioneering work in clinical services and research, the Equine Health Studies Program has consistently addressed some of the most critical health challenges facing horses today. Focus areas include equine laminitis, orthopedics and biomechanics, stem cell and regenerative medicine, gastric and colonic ulcers, respiratory and vascular diseases, and clinical pharmacologic trials. These efforts have been driven by faculty primarily within the Department of Veterinary Clinical Sciences (VCS) and supported by collaborations with experts in the Departments of Pathobiological Sciences (PBS) and Comparative Biomedical Sciences (CBS), as well as other key LSU entities like the LSU AgCenter, LSU Animal Science, LSU Department of Engineering, and the Pennington Biomedical Research Center (PBRC).

With the Center of Excellence designation, the Equine Health Studies Program will be strategically positioned for national and international preeminence, leveraging a broad spectrum of scientific expertise. This designation will empower Equine Health Studies Program to secure both essential and sustainable funding, ensuring that the Equine Health Studies Program can continue their mission at the highest level. The dedicated faculty, staff, and students will play a crucial role in propelling the Equine Health Studies Program Center of Excellence to elite status, establishing it as a recognized leader in equine clinical service, research, veterinary instruction, and continuing education – impacting the State of Louisiana, the nation, and the world.

3. Review of Business Plan

Dr. Frank M. Andrews, DVM, Equine Committee Professor, and Director of the Equine Health Studies Program, will lead the proposed Center of Excellence and will maintain the current structure of the Equine Health Studies Program. The Equine Health Studies Program has multidisciplinary faculty with a wide range of equine research interests.

Current clinical facilities consist of an 18,000-square-foot equine hospital that accommodates 2,500 to 3,000 horses annually. LSU Vet Med is envisioning one of the most ambitious projects in its history: the LSU Vet Med Equine Health and Sports Performance Center of Excellence equine hospital, equine clinical skills building and research facility. This facility will be home to the preeminent equine healthcare and research facility in the region, combining superior clinical practice, expert translational research, and world-class teaching into one modern facility located directly on the LSU Vet Med campus and in the very heart of horse country in Louisiana. The goal is to have a new facility built and operational by 2029.

Additionally, the Equine Health Studies Program has established vital partnerships with leading industry players such as Elanco Animal Health, Boehringer Ingelheim Animal Health, SmartPill Corporation, Merial Limited, Hilltop Bioscience, and Axiota, Inc., among others. These collaborations are essential for discovering new diagnostic methods and treatments for both common and complex equine diseases. The Equine Health Studies Program plans to build on these existing relationships and develop new collaborations with faculty from the Division of Biotechnology and Molecular Medicine (BIOMMED), Tempest Biotech, and other entities within and outside the LSU system.

The establishment of the Equine Health Studies Program as a Center of Excellence is backed by widespread support across Louisiana, including key state breed organizations, the Louisiana Horseman's Benevolent & Protective Association, the Louisiana Racing Commission, racetrack owners and managers, equine veterinarians, and horse owners.

4. Fiscal Impact

A financial impact statement prepared by the College of Business highlighted that, in FY 2023 alone, the Equine Health Studies Program generated a total economic output of \$3.6 million, supported approximately \$1.86 million in total earnings, and accounted for thirty-seven jobs, underscoring its importance to the Louisiana horse industry.

Additionally, the proposed Center of Excellence will be structured similarly as the Equine Health Studies Program, and will continue to have organizational permanency, programmatic autonomy, and a dedicated annual operating budget funded by state law. This budget is independent of other academic units and is directly supported by State Statutory Dedication, insuring stability and focused investment in the Center of Excellence's mission.

5. Description of Competitive Process

n/a

6. Review of Legal Documents

n/a

7. Parties of Interest

n/a

8. Related Transactions

n/a

9. Conflicts of Interest

n/a

10. Attachments

n/a

RESOLUTION

NOW, THEREFORE, BE IT RESOLVED that the Board of Supervisors of Louisiana State University and Agricultural & Mechanical College does hereby approve the request from LSU A&M for initial designation of the Equine Health and Sports Performance Center of Excellence



Board of Supervisors

Request to Amend Article II, Section 6 of the Regulations of the Board from Louisiana State University

Date: October 10, 2024

1. Regulations Citation

Pursuant to Article XI, Section 2. of the Regulations of the Louisiana State University Board of Supervisors, this matter is a significant board matter.

These Regulations, except as they include provisions specifically covered by the Statutes of the State of Louisiana and the Bylaws of this Board, may be amended by receiving an affirmative vote of a majority of the Supervisors after receiving recommendations of the appropriate committee of the Board.

2. Summary of Matter

Article II, Section 6. establishes recognized faculty ranks throughout all LSU institutions. A table of faculty ranks is followed by several corresponding footnotes outlining specific policy provisions regarding the characteristics of the various ranks. The fourth footnote enumerates LSU's existing non-tenure track title series for faculty whose primary appointments consist mainly of research. The proposed revisions would establish a new series, congruent to the research series, that would establish a non-tenure track professorial title series for instruction. This would provide a clear career progression path for faculty whose primary appointments consist mainly of instruction.

If approved, Section 6 of Article II of the Regulations would be edited as follows on p. 15 (additions are in red; there are no proposed deletions):

- (4) *Full-time faculty whose primary responsibility is conducting research and who normally are paid from grant or contract funds are to be appointed as Assistant Professor-Research, Associate Professor-Research, or Professor- Research or Assistant Professor-Extension, Associate Professor-Extension, Professor-Extension. Full-time faculty whose primary responsibility is instruction are to be appointed as Instructor, Assistant Professor – Instruction, Associate Professor – Instruction, or Professor – Instruction. Full-time faculty in the clinical sciences with responsibility to teaching and service programs and who are essential for patient care are to be appointed as Assistant Professor of Clinical (discipline), Associate Professor of Clinical (discipline), or Professor of Clinical (discipline), Extension field faculty employed primarily to conduct educational programs are appointed as Assistant Agent, Associate Agent, and Agent. The faculty in these ranks do not acquire tenure.*

The Council of Chief Academic Officers has reviewed this proposed change, and the members endorse this amendment.

3. Review of Business Plan

Subject to Presidential approval, Permanent Memorandum 23, which governs faculty ranks within the provisions of the Board Regulations, will be updated to allow LSU institutions to implement the new instructional title series, should they so choose.

4. Fiscal Impact

Each LSU institution, at the direction of chancellors and equivalent institutional heads, may implement appropriate compensation increases concurrent with promotion in faculty rank.

5. Description of Competitive Process

N/A

6. Review of Legal Documents

N/A

7. Parties of Interest

N/A

8. Related Transactions

N/A

9. Conflicts of Interest

N/A

10. Attachments

N/A

RESOLUTION

NOW, THEREFORE, BE IT RESOLVED that the Board of Supervisors of Louisiana State University and Agricultural and Mechanical College does hereby approve the amendment to Article II, Section 6. of the Regulations, as indicated; and

BE IT FURTHER RESOLVED that the Board endorses a revision to Permanent Memorandum 23 reflective of these changes and supports each LSU institution to implement policies compliant with these Regulations and with respect to unique institutional missions.



Board of Supervisors

Request to Amend Section Article III, Section 1 of the Regulations of the Board from Louisiana State University

Date: October 10, 2024

1. Regulations Citation

Pursuant to Article XI, Section 2. of the Regulations of the Louisiana State University Board of Supervisors, this matter is a significant board matter.

These Regulations, except as they include provisions specifically covered by the Statutes of the State of Louisiana and the Bylaws of this Board, may be amended by receiving an affirmative vote of a majority of the Supervisors after receiving recommendations of the appropriate committee of the Board.

2. Summary of Matter

Article III, Section 1. Specifies that faculty at the rank of instructor may petition for sabbatical leave for study and research. This request is to amend the language in the Regulations to allow each LSU institution more flexibility in determining which faculty ranks are eligible for sabbatical consideration. The change was precipitated by an LSU A&M Faculty Senate committee, who has officially recommended that tenure be a requirement at LSU A&M for sabbatical eligibility. This change would allow all institutions to implement their own policies regarding eligible faculty for sabbaticals, respecting the unique missions of each institution. If approved, Section 1 of Article III of the Regulations would be edited as follows (deletions are stricken through in red; additions are in red):

Full-time academic employees at the rank ~~of Instructor (or equivalent or above), and tenure status established at individual LSU institutions~~ [Sec. 2-1a(1)] who have completed six years of service on the campus without having received leave with pay ~~for professional purposes~~, may petition for sabbatical leave for study and research, the object of which is to enable them to increase their professional efficiency and usefulness to the University. ~~Institutions may restrict sabbatical eligibility to certain ranks and may take into account tenure status, as appropriate to the mission of the institution.~~ Adequate justification setting forth the plan for each sabbatical leave shall be stated, and report of the accomplishments under each leave granted shall be made promptly upon return from sabbatical leave. Sabbatical leave shall ~~normally~~ be approved for the purpose of seeking a higher degree only under unusual circumstances. Persons employed on a 12-month basis may be granted 12 months' leave with one-half pay or six months' leave with full pay. Persons employed on nine-month basis may be granted nine months' leave with one-half pay or four and one-half months' leave with full pay. Approval of sabbatical leaves shall be in accordance with the Personnel Action Approval Policy. A member of the academic staff who is granted sabbatical leave shall be required to return to ~~his~~ ~~their~~ University duties for at least ~~a year before accepting employment elsewhere~~ ~~one year after completion of the sabbatical leave~~. A condition for granting of a sabbatical leave is the potential benefit the University will receive as a result of the sabbatical.

The Council of Chief Academic Officers has reviewed this proposed change, and the members endorse this amendment.

3. Review of Business Plan

Each LSU institution will update sabbatical policies, if necessary and as appropriate, in compliance with the amended Regulations.

4. Fiscal Impact

Faculty granted a sabbatical receive a half-year sabbatical with full pay or a full-year sabbatical with half pay. Respective colleges and departments commit financial resources to cover any instructional or administrative duties vacated by the faculty member while on sabbatical. No significant new fiscal impact is projected as a result of this change.

5. Description of Competitive Process

N/A

6. Review of Legal Documents

N/A

7. Parties of Interest

N/A

8. Related Transactions

N/A

9. Conflicts of Interest

N/A

10. Attachments

N/A

RESOLUTION

NOW, THEREFORE, BE IT RESOLVED that the Board of Supervisors of Louisiana State University and Agricultural and Mechanical College does hereby approve the amendment to Article III. Section 1. of the Regulations, as indicated; and

BE IT FURTHER RESOLVED that the Board endorses a revision to Permanent Memorandum 12 reflective of these changes and supports each LSU institution to implement sabbatical policies compliant with these Regulations and with respect to unique institutional missions.



Board of Supervisors

Request from LSU Health Sciences Center-Shreveport for Continued Authorization of the Center for Brain Health

Date: October 10, 2024

1. Bylaw Citation

Pursuant to Article VII, Section 1, Paragraph B of the Bylaws of the Louisiana State University Board of Supervisors, this matter is a significant board matter.

- B. The Board shall approve any new academic program resulting in the awarding of a degree, certificate, or credential, as well as any changes of degree designation or termination of degree programs. The Board shall approve any new institution, department, research center, or institute, or required reauthorization of such.

2. Summary of Matter

LSU Health Science Center-Shreveport seeks continued authorization of the Center for Brain Health (CBH) for five years. The CBH was granted initial approval by the Board of Regents in 2019. The CBH strives to expand neuroscience-related education, provide comprehensive care for brain disorders, attract young specialists and pioneering clinical trials to North Louisiana, and develop a core of federally funded investigators necessary to compete for large scale research funding.

Further highlighting the necessity of the work of the CBH, there is a national shortage of neurologists and physicians specializing in care of older adults, especially in rural areas like North Louisiana. In contrast, 2023-24 has seen unprecedented breakthroughs in care for brain injury and disease. Deep brain stimulation, which involves surgical implantation of electrodes in targeted brain regions to deliver electrical impulses, is now being adapted for the treatment of major depression, epilepsy, traumatic brain injury, sleep disorders, schizophrenia, Alzheimer's disease, obsessive compulsive disorder, tinnitus and arterial hypertension, with Ochsner LSU Health Shreveport providing the only program in the region. It is therefore more important than ever to support neuroscience education, care and research through the CBH.

Specific CBH achievements include:

- The Alzheimer's Disease research team has grown considerably since 2020. It is now a multidisciplinary team of over 15 faculty and trainees. The AD team has received funding for two NIH supplements to a COBRE grant on cardiovascular disease and redox biology.
- The first drug to treat the pathophysiology of Alzheimer's disease was approved in 2023. Dr. Roger Kelley, a neurologist with Ochsner LSU Health Shreveport, is leading the effort to provide this ground-breaking drug to our community.
- The Parkinson's disease team has also grown, including two new movement disorders specialists arriving in summer and fall of 2024. Dr. Jamie Toms, a functional neurosurgeon, is the only provider of deep brain stimulation therapy. Of note, 2024 brought the first biomarker for early detection of Parkinson's disease.

- In addition, a statistician, Dr. Mohammad Bhuiyan has joined the Alzheimer’s Disease research team. He has expertise in machine learning models and AI and is in the process of publishing his work using AI technology to analyze brain images from people with and without dementia, with the goal to improve early detection. He is spearheading several NIH grants that are currently under review.

3. Review of Business Plan

The CBH is led by Dr. Elizabeth Disbrow, Professor of Neurology. The CBH team consists of nearly 50 faculty members. Additionally, the CBH now has a physical location that is two miles from the medical school campus. The campus owned 5,000 square foot space is designed for human subjects research, with cognitive testing rooms, a brain image analysis lab, and wet lab area complete with blood and body fluid processing, storage and shipping facilities and offices for faculty, trainees and staff.

4. Fiscal Impact

LSU Health Shreveport was chosen as a site for a new Centers for Medicare & Medicaid Services (CMS) pay model supporting the medical and non-medical needs of dementia patients and their caregivers. The Guiding an Improved Dementia Experience (GUIDE) Model aims to increase patient care coordination and support for caregivers. Dr. Elizabeth Disbrow, Director of the Center for Brain Health and Dr. John Vanchiere, Associate Vice Chancellor of Clinical Research are leading the GUIDE team. The financial impact of the model will be studied over the next 8 years. The LSU Health Shreveport site is the only one in North Louisiana.

5. Description of Competitive Process

N/A

6. Review of Legal Documents

N/A

7. Parties of Interest

N/A

8. Related Transactions

N/A

9. Conflicts of Interest

N/A

RESOLUTION

NOW, THEREFORE, BE IT RESOLVED that the Board of Supervisors of Louisiana State University and Agricultural & Mechanical College does hereby approve the request from LSU Health Sciences Center-Shreveport for the continued authorization of the Center for Brain Health.



Board of Supervisors

Request from LSU A&M to Convert the Paul M. Horton Chair in Chemical Engineering to Professorships

Date: October 10, 2024

1. Bylaw Citation

Pursuant to Article VII, Section 1. A. of the Bylaws of the Louisiana State University Board of Supervisors, this matter is a significant board matter.

- A. Any matter having a significant or long-term impact, directly or indirectly, on the finances or the academic, educational, research, and service missions of the University or any of its campuses

2. Summary of Matter

The Paul M. Horton Chair in Chemical Engineering exists as the result of private donations from the Cain Family in the amount of \$1.2 million, which was matched by the Board of Regents Support Fund in 2007. The \$2 million endowed chair has been vacant since 2015.

The past decade has seen sustained growth of the energy and chemical manufacturing industries in the region and nationally, and LSU is dedicated to developing the economies of Louisiana and the Gulf Coast region. Converting the Horton Chair into two endowed professorships would create further opportunity to meet the rising need for outstanding midcareer faculty in the Cain Department of Chemical Engineering without performing the required national search of an endowed chair.

LSU A&M requests approval to convert the endowed chair by reestablishing it as two endowed professorships:

- Paul M. Horton Professorship in Chemical Engineering #1 with a corpus of \$1.2M*
- Paul M. Horton Professorship in Chemical Engineering #2 with a corpus of \$800,000*

3. Review of Business Plan

n/a

4. Fiscal Impact

The Paul M. Horton Professorship in Chemical Engineering #1 will have \$720,000 in private donations and \$480,000 in State matching funds for a total endowed corpus of \$1.2 million.

The Paul M. Horton Professorship in Chemical Engineering #2 will have \$480,000 in private donations and \$320,000 in State matching funds for a total endowed corpus of \$800,000.

5. Description of Competitive Process

Matching funds were received in 2007 through a competitive process. The Board of Regents allow existing matched chairs to be converted to professorships provided each of the new professorships maintains an endowed corpus of \$250,000.

6. Review of Legal Documents

Under provisions of the 1998 endowment agreement between Gordon A. Cain and the LSU Foundation, authority is given to the LSU Foundation Board of Directors to revise specific purposes in the original agreement as there is no current donor with authority to formally amend the agreement. The LSU Foundation Board of Directors approved a resolution on March 18, 2024 to convert the chair to professorships.

7. Parties of Interest

N/A

8. Related Transactions

N/A

9. Conflicts of Interest

N/A

10. Attachments

N/A

RESOLUTION

NOW, THEREFORE, BE IT RESOLVED that the Board of Supervisors of Louisiana State University and Agricultural and Mechanical College does hereby approve the request to convert the Paul M. Horton Chair in Chemical Engineering to two endowed professorships; and

BE IT FURTHER RESOLVED that the two endowed professorships be named the Paul M. Horton Professorship in Chemical Engineering #1 and the Paul M. Horton Professorship in Chemical Engineering #2.



Board of Supervisors

FINANCE COMMITTEE

Request to Approve Differential Tuition and Mandatory Fee Amounts Pursuant to the Authority Granted in Act 790 of the 2024 Regular Session of the Louisiana Legislature

Date: October 10, 2024

1. Bylaw Citation

Pursuant to Article VII, Section 1, A. of the Bylaws of the LSU Board of Supervisors, this matter is a “significant board matter.”

A. Any matter having a significant or long-term impact, directly or indirectly, on the finances or the academic, educational, research, and service missions of the University or any of its campuses.

2. Summary of Matter

Act 790 of the 2024 Regular Session of the Louisiana Legislature amended La. R.S. 17:3351(A)(5)(a) to provide the LSU Board of Supervisors and other postsecondary management boards with the following statutory authority related to tuition and mandatory fees to be paid by students effective August 1, 2024.

- *Establish differential tuition for graduate, professional, specialized, or undergraduate high-cost programs.*
- *Establish mandatory fee amounts and control and consolidate separate fee amounts.*
- *Increase the differential tuition and mandatory fee amounts by no more than ten percent over any two-year period.*

La. R.S. 17:3351(A)(5)(a) as enacted by Act 790 requires that each management board establish a process for providing adequate notice to students of tuition and fee amounts, criteria for waivers in cases of financial hardship, and make information regarding such waivers available to all students. Each management board is required to submit an annual report to the Legislature and Board of Regents no later than February 15 regarding how the tuition and mandatory fees authorized by Act 790 are being implemented.

Louisiana State University and Agricultural & Mechanical College (LSU), Louisiana State University of Alexandria (LSUA), Louisiana State University at Eunice (LSUE), Louisiana State University Health Sciences Center – New Orleans (LSUHSC-NO), and Louisiana State University Health Sciences Center – Shreveport (LSUHSC-S) are requesting changes to tuition and mandatory fees per the authority granted under La. R.S. 17:3351(A)(5)(a) as enacted by Act 790 beginning with the Fall 2025 semester. None of the remaining University campuses are seeking changes to tuition or mandatory fees under the authority granted under La. R.S. 17:3351(A)(5)(a) as enacted by Act 790 at this time.

3. Review of Business Plan

LSU, LSUA and LSUE request to adopt a stratified differential tuition schedule beginning with the Fall 2025 semester. The **stratified tuition schedule** is a common tool used to support high-cost programs at universities in the United States, including across the Southeast. LSU, LSUA and LSUE delineate high-cost programs based on whether a degree program has some or all of the following: 1. laboratory or studio sections; 2. restrictions requiring lower student-to-faculty ratios; 3. significant equipment exceeding basic technology (desktop computer, projector, web-broadcast technology); or 4. the cost of faculty is high (typically driven by competition in the private sector – e.g., law, engineering, business). Tier 1 of the stratified tuitional schedule are programs at the current tuition level; Tier 2 reflects programs that would fall under a high-cost program rate. Appendix A lists the programs by cost category for each campus. LSU Paul M. Hebert Law Center (LSU Law), LSU School of Veterinary Medicine (LSU Vet), LSUHSC-NO and LSUHSC-S programs all fall under Tier 2 as either a high-cost undergraduate, graduate, or professional program.

The statute provides authority to increase tuition in high-cost programs and fees by up to 10% over a two-year period. LSU, LSUA, LSUE, LSUHSC-NO, and LSUHSC-S are requesting approval to adopt a differential tuition rate for high-cost programs beginning with the Fall 2025 semester that would not exceed the maximum increase of ten percent over any two-year period. Students majoring in two or more programs will only be assessed one tuition rate.

LSU also requests authority to establish the program cost for students enrolled in an approved Comprehensive Transition Post-Secondary Program. The Comprehensive Transition Post-Secondary Program at LSU has received funding from the Louisiana Postsecondary Inclusive Education Advisory Council and the program has been determined to be a high-cost program eligible for differential tuition under La. R.S. 17:3351(A)(5)(a) as enacted by Act 790. For LSU, the program cost for the Integrative Community Studies Program would be \$12,000 per semester in addition to required fees.

4. Fiscal Impact

The following table provides the proposed maximum differential tuition and fee increases over a two-year period for full-time students at each campus as well as the estimated revenue projected to be generated by these increases.

Institution	Maximum Differential Tuition Increase Fall 2025	Maximum Mandatory Fee Increase Fall 2025	Estimated Fiscal Impact
LSU	10%	10%	\$21,725,000
LSU Law	10%	10%	\$790,000
LSU Vet	10%	10%	\$1,944,000
LSU Alexandria	10%	10%	\$376,000
LSU Eunice	10%	10%	\$464,000
LSU Shreveport	N/A	N/A	N/A
LSUHSCNO	10%	10%	\$3,553,000
LSUHSCS	10%	10%	\$2,584,000
Total			\$31,436,000

5. Description of Competitive Process

Not applicable.

6. Review of Legal Documents

La. R.S. 17:3351(A)(5)(a) as enacted by Act 790 of the 2024 Regular Legislative Session has been reviewed and all proposed tuition increases have been deemed to be in compliance with this legislation.

7. Parties of Interest

None of the parties relevant to the approval of this resolution have any related interest, nor will they receive any financial gain from this approval.

8. Related Transactions

Not applicable.

9. Conflicts of Interest

None.

10. Attachments

1. Act 790 of the 2024 Regular Session of the Louisiana Legislature
2. Appendix A Academic Programs by Cost Classification
3. Permanent Memorandum 43: Student Fees

RESOLUTION

WHEREAS La. R.S. 17:3351(A)(5)(a) as enacted by Act 790 of the 2024 Regular Session of the Louisiana Legislature authorizes the Board to establish differential tuition for graduate, professional, specialized, or undergraduate high-cost programs; and

WHEREAS La. R.S. 17:3351(A)(5)(a) as enacted by Act 790 authorizes the Board to establish mandatory fee amounts for all programs and control and consolidate separate fees; and

WHEREAS La. R.S. 17:3351(A)(5)(a) as enacted by Act 790 requires the Board establish a process for providing adequate notice to students of tuition and fee amounts, the criteria for waivers in cases of financial hardship, and to make information regarding such waivers available to all students.

NOW, THEREFORE, BE IT RESOLVED by the Board of Supervisors of Louisiana State University and Agricultural and Mechanical College that the Board approves the implementation of the proposed differential tuition and mandatory fee increases at Louisiana State University and Agricultural & Mechanical College, LSU Paul M. Hebert Law Center, LSU School of Veterinary

Medicine, LSU of Alexandria, LSU in Eunice, LSU Health Sciences Center in New Orleans, and LSU Health Sciences Center in Shreveport; and

BE IT FURTHER RESOLVED by the Board of Supervisors of Louisiana State University and Agricultural and Mechanical College that each campus shall have in a place a procedure for waivers for cases of financial hardship, awards of scholarships or waivers of tuition and fees, and compensation packages for graduate assistants; and

BE IT FURTHER RESOLVED that effective with the Fall 2025 semester, the President is authorized by this Board to set the differential tuition amount for students at Louisiana State University and Agricultural & Mechanical College, LSU Paul M. Hebert Law Center, LSU School of Veterinary Medicine, LSU of Alexandria, LSU in Eunice, LSU Health Sciences Center in New Orleans, and LSU Health Sciences Center in Shreveport by an amount not to exceed ten percent over a two-year period, pursuant to La. R.S. 17:3351(A)(5)(a) as enacted by Act 790 of the 2024 Regular Legislative Session; and

BE IT FURTHER RESOLVED that effective with the Fall 2025 semester, the President is authorized by this Board to set the mandatory fees for each campus by an amount not to exceed the ten percent (10%) over a two-year period and consolidate required fees approved herein pursuant to La. R.S. 17:3351(A)(5)(a) as enacted by Act 790 of the 2024 Regular Legislative Session; and

BE IT FURTHER RESOLVED by the Board of Supervisors of Louisiana State University and Agricultural and Mechanical College that the President of LSU, or his designee, is hereby authorized to make any adjustments necessary in finalizing and implementing these differential tuition and mandatory fee increases within the maximum tuition and mandatory fee amounts presented and authorized for each campus in this item, in accordance with La. R.S. 17:3351(A)(5)(a) as enacted by Act 790 of the 2024 Regular Legislative Session.

ACT No. 790

2024 Regular Session

HOUSE BILL NO. 862

BY REPRESENTATIVES HUGHES, CARPENTER, FREIBERG, AND ST. BLANC

1
2
3
4
5
6
7
8
9
10
11
12
13
14
15
16
17
18
19
20
21
22
23

AN ACT

To amend and reenact R.S. 17:3351(A)(5)(a), relative to tuition and mandatory fee amounts for public postsecondary education institutions; to authorize each public postsecondary management board to impose and adjust certain tuition and fee amounts; to provide for limitations; to provide for reporting; and to provide for related matters.

Be it enacted by the Legislature of Louisiana:

Section 1. R.S. 17:3351(A)(5)(a) is hereby amended and reenacted to read as follows:

§3351. General powers, duties, and functions of postsecondary education management boards

A. Subject only to the powers of the Board of Regents specifically enumerated in Article VIII, Section 5 of the Constitution of Louisiana, and as otherwise provided by law, each postsecondary system management board as a body corporate shall have authority to exercise power necessary to supervise and manage the day-to-day operations of institutions of postsecondary education under its control, including but not limited to the following:

* * *

(5)(a)(i) In accordance with any other applicable provision of this Paragraph, determine the tuition and mandatory fees which shall be paid by students and adjust the amount of tuition and fees as provided in this Subparagraph.

(ii) Payments to cover or a waiver of any mandatory fee imposed in accordance with this Title except for tuition shall be included in the compensation

1 package of each graduate student serving as a teaching assistant, research assistant,
2 or curatorial assistant. Each public postsecondary education management board shall
3 adopt a policy relative to implementing the provisions of this Item.

4 (iii) Each management board may establish differential tuition for any
5 graduate, professional, or specialized program. Each management board may
6 establish differential tuition for any undergraduate program, including but not limited
7 to programs granting certificates, degrees, diplomas, or other credentials of value,
8 that has been identified as a high-cost program by the Board of Regents.

9 (iv) Each management board may establish mandatory fee amounts for all
10 programs at each of the institutions under its supervision and control and consolidate
11 separate fees.

12 (v) Each management board may increase differential tuition amounts and
13 mandatory fee amounts by no more than ten percent over any two-year period. Each
14 management board may lower tuition and fee amounts with no limitation. The
15 authority to establish tuition and fee amounts as provided in this Subparagraph
16 includes the authority to establish tuition and fee amounts proportional to the
17 amounts for part-time students and for students enrolled in summer and intersession
18 terms.

19 (vi) Each management board shall establish a process for providing adequate
20 notice to students of tuition and fee amounts. Prior to imposing any increase in
21 tuition or fee amounts pursuant to this Subparagraph, each management board shall
22 establish criteria for waivers in cases of financial hardship. Information about such
23 waivers shall be made available to all prospective students affected by the increase
24 in a timely manner, so they are aware of the increase and the availability of waivers
25 prior to having to make any final decision concerning attendance.

26 (vii) Awards of scholarships or waivers of tuition or fees shall be included
27 in the information package of any student awarded such scholarship or waiver and
28 the compensation package of each graduate student serving as a teaching assistant,
29 research assistant, or curatorial assistant.

1 (viii) Each management board shall submit a written report to the Board of
 2 Regents, the House Committee on Education, the Senate Committee on Education,
 3 the House Committee on Appropriations, and the Senate Committee on Finance not
 4 later than February fifteenth annually regarding how the tuition and mandatory fees
 5 authorized by this Subparagraph are being implemented at each institution under its
 6 supervision and management.

7 * * *

8 Section 2. The first report required by R.S. 17:3351(A)(5)(a)(vii) as enacted by this
 9 Act is due by February 15, 2026.

SPEAKER OF THE HOUSE OF REPRESENTATIVES

PRESIDENT OF THE SENATE

GOVERNOR OF THE STATE OF LOUISIANA

APPROVED: _____



PERMANENT MEMORANDUM 43 STUDENT FEES

POLICY DIGEST

Monitoring Unit: Office of Finance & Administration

Initially Issued: January 19, 2024

I. PURPOSE

This policy is set forth to provide legal background for fees assessed by any Louisiana State University institution; to define the various types of student fees; and to provide guidelines for the administration of fee revenue.

A. Defining Legislation

[Article VII. Section 2.1. \(A\) of the Louisiana Constitution](#) states:

Any new fee or civil fine or increase in an existing fee or civil fine imposed or assessed by the state or any board, department, or agency of the state shall require the enactment of a law by a two-thirds vote of the elected members of each house of the Legislature.

B. Interpretation of the Legislation

In *Louisiana Public Facilities Authority v. All Taxpayers, Property Owners, et al.*¹, the First Circuit Court of Appeal determined “the legislature has evidenced no intent to have oversight over “fees” with respect to LSU, other than those fees directly connected with LSU’s principal governmental function of providing higher education to the citizens of this state.” The court concluded the price charged by LSU for admission to football games in Tiger Stadium is not a “fee” requiring legislative approval under La. Const. art. 7, Section 2.1.

The First Circuit Court of Appeal adopted the reasoning from two Attorney General Opinions in reaching this decision, La. Atty. Gen. Op. No. 96-353 (October 9, 1996) and La. Atty. Gen. Op. No. 01-165 (May 4, 2001). These two Attorney General opinions, and a third attorney general opinion issued to the Louisiana Legislative Auditor, La. Atty. Gen. Op. No. 06-293 (June 14, 2007), should be used as primary guidance for the approval of fees. The Opinions are summarized below:

1. [Atty. General Opinion No. 96-353](#) defines fees by stating: “Charges which are assessed by a governmental entity for the purpose of defraying the costs of providing a governmental service or the costs of regulating a particular area would be considered fees. Those fees or charges for non-governmental functions or products and/or services not in the control of the governmental entity at issue would be exempt from legislative review.”

¹ *Louisiana Public Facilities Authority v. All Taxpayers, Prop. Owners, Citizens of State of La. & Nonresidents Owning Prop. or Subject to Taxation Therein*, 2003-2738 (La. App. 1 Cir. 12/23/03), 868 So. 2d 124, 136, *writ denied*, 2004-0213 (La. 3/11/04), 869 So. 2d 801.

The AG Opinion further states that LSU “is created and exists for the sole purpose of providing public higher education to the citizens of this State. This is its governmental function. Those charges which are assessed for the provision of higher education to LSU students would be considered fees for purposes of Article 7, Section 2.1. Any charges which are for services or products which are not directly a part of the delivery of an education are not considered fees.”

For purposes of Article 7, Section 2.1, the word fee does not include charges for “student housing, food services, book store merchandise, medical or veterinary services, and admittance to extracurricular events.”

2. [Atty. General Opinion No. 01-165](#) determined that a charge for the cost of utilities is comparable to a charge for student housing, food services, etc. considered in La. Atty. Gen. Op. No. 96-353. Therefore, higher education management boards may impose a utility surcharge without an approval by a two-thirds vote of the Legislature.
3. [Atty. General Opinion No. 06-0293](#) determined the following:
 - a. Fees imposed prior to the enactment of La. Const. art. VII, § 2.1 in 1995 may continue without the approval of the Legislature unless the fees are increased.
 - b. Fees which were imposed prior to the enactment of La. Const. art. VII, § 2.1 in 1995 and which would require two-thirds vote of the Legislature after the enactment of La. Const. art. VII, 2.1 in 1995, may be renewed and continue without the approval of the Legislature unless the fees are being increased.
 - c. The Building Use Fee, authorized by Act No. 619 of the 1954 Regular Legislative Session and amended by Act No. 15 of the 1967 Regular Legislative Session, is a fee on all students attending institutions of higher education to “construct, acquire, extend, repair or improve any academic facilities suitable for use as classrooms, laboratories, gymnasiums, libraries, student infirmaries, and related facilities.” The Building Use Fee was imposed prior to the enactment of La. Const. art. VII, § 2.1 in 1995; as such, the Building Use Fee may continue to be imposed by a university as long as there is a need for the creation of academic buildings or for repairs to existing infrastructure Act 15 of the 1967 Regular Legislative Session prohibits an increase of this fee.

It is important to note that other court decisions, statutes, and AG opinions may be relevant to the assessment and administration of certain fees and should be taken into consideration on a case-by-case basis.

II. DEFINITIONS & GENERAL POLICY

- A. Required Fees – part of the general tuition and required fees charged to all full-time students, and in some cases, to all part-time students. These fees are included in the university’s tuition and fee schedules and are charged to the general population regardless of the degree program in which a student is enrolled. These fees typically require two-thirds vote by the Legislature. Examples include the academic excellence, technology, and operational fee.

There are two categories of required fees that are not considered a direct part of the delivery of an education and do not require legislative approval. The distinction between the two categories is due to the method by which the fees are approved:

1. Student Self-Assessed Fee – a type of required fee initiated by Student Government or another group of students and approved through a campus-wide referendum to support

areas, activities, and services. These fees require approval by the Board of Supervisors (BOS). Examples include campus yearbook, newspaper, etc.

2. University Self-Assessed Fee – a type of required fee that is not initiated through a campus-wide referendum to support various service functions to students. These fees require approval by the BOS.

- B. Course Fees – an additional charge for supplies and/or services to students applied at the course level for consumable expenses directly related to students' participation in a course and are intended to pay for specified course-related costs. A course fee should be based on plausible estimates of the anticipated costs or previous records of actual costs and should be kept as low as possible.

There are two categories of course fees as defined below:

1. Supply/Service Fee – a type of course fee assessed which (1) provides tools, equipment, or products that have a continuing value to the student; (2) provides for pooled purchase of services not normally provided by the institution; (3) provides for consumable supplies, such as art supplies; or (4) for services or products provided by a vendor external to the university that are subsequently provided to students as a requirement of a course. These fees require two-thirds vote by the Legislature.
2. Trip Fee – a type of course fee for required travel expenses for students to visit off-campus sites as part of a course. These fees require approval by the institution's chief academic officer and chief financial officer.

An overall goal is to have a minimal number of courses charging an additional course fee. Course fees will be allowable in limited circumstances and only to recover the cost of materials and services consumed during the progress of the course or for items that students take away with them at the end of the course.

General costs related to the development, instruction, and assessment of offering a course are expected to be borne by the department and college, including materials related to the mechanics of teaching the course, such as course outlines, syllabi and similar handouts, exams, and the purchase, maintenance, and replacement costs of instructional and other capital equipment. The department is also expected to bear the costs of staffing courses, including personnel employed to aid in the course, such as teaching assistants and guest speakers. Course fees are not intended to replace general operating costs, which are to be paid from the general university tuition and fee revenue.

Course fees charged to students must be set to cover not more than the cost of the goods and/or services provided. Course fees, when approved, must be separate, unique, and used solely for support of the course involved and for the purposes specified to create the fee. Collection of course fees in the classroom or by faculty is not permitted. Billing and payment of course fees must be through standard university business practices (e.g., bursar/treasurer). Students must be made aware of course fees prior to registration.

- C. Program Fees – additional fees assessed to students in a particular curriculum (i.e., MBA Professional Program Fee) or tuition and fees for students enrolled in an academic degree program offered entirely through distance education (i.e., LSU Online degree programs) as defined by the Southern Association of Colleges and Schools Commission on Colleges (SACSCOC) when such program is comparable to a program offered through traditional in-

person classroom instruction in accordance with [La. Rev. Stat. 17:3351.17, Act 426 of the Regular Legislative Session](#).

Program fees assessed to students in a particular curriculum (excluding academic degree programs offered entirely through distance education) require approval by a two-thirds vote of the Legislature.

Tuition and fees assessed to students enrolled in an academic degree program offered entirely through distance education (i.e., LSU Online degree programs) as defined by SACSCOC when such program is comparable to a program offered through traditional in-person classroom instruction in accordance with [La. Rev. Stat. 17:3351.17, Act 426 of the Regular Legislative Session](#) require approval by the President.

- D. Special Service Fees – a type of fee that is not part of required fees or course fees assessed to students for various services including, but not limited to, graduation, diploma, transcript, late fees, and payment plan fees. These fees require approval by the President.
- E. Optional Service Fees – a type of fee that is not part of required fees or course fees for services a student may voluntarily choose. This includes but is not limited to housing, meal plans, admission to extracurricular activities, and parking. These fees must be approved by the institution’s chief academic officer and chief financial officer.

III. PROCEDURES

Each campus must establish and publish procedures for requesting and approval of student fees. (See Appendix for Campus Approval Matrices.)

A. Reaffirmation of Course and/or Program Fees

Course and/or program fees should be evaluated and reaffirmed during the Academic Program Review process. These program reviews may be scheduled to coincide with the program’s external reaccreditation process but should occur no less than every seven years.

B. Changes to Student Fees

Increases or reinstatement of fees must be submitted for approval in accordance with the prescribed approval process based on the type of fee (See Definitions & General Policy Section). Reaffirmation or decreases of current fee levels do not require administrative or legislative approval.

C. Administration of Course and Program Fee Revenue

The oversight and management of course and/or program fees are the responsibility of the college/department. Course/program fee revenue and related expenses should not be commingled with other activities of the academic department. To the greatest extent possible, each course/program fee should be accounted for separately in the financial system. The intent of course fees is to cover not more than the cost of the goods or services provided. Significant balances should not accumulate from course fees. The academic department should review significant balances and an assessment of a reduction in the fee should be completed. Course and/or program fee accounts should not be in an overdraft status.

D. Records Retention

Documents related to the request, approval (including legislative or BOS approval, if applicable), change, or reaffirmation of a student fee should be maintained by each institution. Documents may be maintained in electronic form provided they are housed on a secure network drive.

IV. SOURCES

- A. [Article VII. Section 2.1. \(A\) of the Louisiana Constitution](#)
- B. [Atty. General Opinion No. 96-353](#)
- C. [Atty. General Opinion No. 01-165](#)
- D. [Atty. General Opinion No. 06-0293](#)
- E. [La. Rev. Stat. 17:3351.17, Act 426 of the Regular Legislative Session](#)

V. APPENDICIES

LSU Fee Approval Matrix
LSU Alexandria Approval Matrix
LSU Eunice Approval Matrix
LSU Shreveport Approval Matrix
LSU Health Sciences Center – New Orleans Approval Matrix
LSU Health Sciences Center – Shreveport Approval Matrix

Appendix A

Academic Programs by Cost Classification

Louisiana State University and Agricultural & Mechanical College

Tier 1	Tier 2
African and African Am Studies	Accounting
Bac. Interdisciplinary Studies	Allied Health
Comm Sci. and Disorders	Ag and Ext Education and Evaluation
Communication Studies	Ag Economics and Agribusiness
Education	Animal Sciences
English	Architecture
French Studies	Art
Geography and Anthropology	Biological and Agri Engen.
History	Biological Sciences
Leadership and HR Dev	Biomedical & Vet. Medical Sciences
Library and Info. Science	Chemical Engineering
Mass Communication	Chemistry
Mathematics	Civil and Environmental Engen.
Philosophy and Rel Studies	Comparative Bio Science
Political Science	Computer Science
Public Administration	Construction Management
Social Work	Economics
Sociology	Electrical Engineering
World Lang., Lit., and Cultures	Entrepreneur. and Inf. Sys.
University College Advising/Counseling	Environmental Sciences
University College Freshman Year	Experimental Statistics
	Finance
	Geology and Geophysics
	Honors
	Industrial Engineering
	Interior Design
	Kinesiology
	Landscape Architecture
	Law
	Management
	Marketing
	Mechanical Engineering
	Music
	Nutrition and Food Sciences
	Ocean. and Coastal Sci
	Pathobiological Sciences

Tier 1	Tier 2
	Petroleum Engineering
	Physics and Astronomy
	Plant Pathology and Crop Physiology
	Plant, Envir. and Soil Sciences
	Psychology
	Renewable Natural Resources
	Textiles, Apparel Design, and Merch.
	Theatre
	Veterinary Clinical Sciences

Louisiana State University of Alexandria

Tier 1	Tier 2
Actuarial Science	Accounting
Africana Studies	Assoc Science in Nursing
Biology – Secondary Education	Allied Health
Communication Studies	Agriculture
Coaching, Health & Phys. Education	Arts Management
Criminal Justice	Aviation Management
Elementary Education	Biology
English	Biology – Forensics
English – Secondary Education	Business Administration
Family & Community Dynamics	Chemistry
General Studies	Clinical Psychology
Health & Fitness Studies	Chemistry
History	Computer Science
History – Secondary Education	Cybersecurity
Human Relationships	Disaster Science & Emergency Management
Humanities	Financial Analysis
Mathematics	Graphic Design
Math – Secondary Education	Industrial & Organizational Psychology
Organizational Studies	Health Professions
Political Science	Health Sciences
Public Relations	Information Systems
Religious Studies	International Business
Social Science	Kinesiology
Sports Broadcasting	Long Term Care Administration
Visual Communication	Management
	Marketing

Tier 1	Tier 2
	Medical Laboratory Science
	Organismal & Field Biology
	Professional Aviation
	Psychology
	Radiologic Technology
	RN to BSN
	Sports Management
	Visual & Performing Arts
	Zoo Sciences

Louisiana State University at Eunice

Tier 1	Tier 2
Care & Development of Young Children	Agriculture Associate Degree
Criminal Justice Associate Degree	Biological Sciences
General Studies Associate Degree	Diagnostic Medical Sonography Associate Degree
LA Transfer Degree – Criminal Justice	Health Sciences
LA Transfer Degree – Humanities	LA Transfer Degree – Business
LA Transfer Degree – Mass Communication	LA Transfer Degree – Fine Arts
LA Transfer Degree – Social Sciences	LA Transfer Degree – Biological Sciences
Medical Coding & Billing	LA Transfer Degree – Physical Sciences
Human Resources Management	Management Associate Degree
General Studies Certificate	Nursing Associate Degree
	Radiologic Technology Associate Degree
	Respiratory Care Associate Degree
	Surgical Technology Associate Degree
	Chemical Technician Certificate
	Accounting Technology Certificate
	Administrative Technology Specialist
	Fire Service Technology Certificate

Louisiana State University Health Sciences Center – New Orleans

Tier 2
Biochemistry
Cell Biology & Anatomy
Cardiopulmonary Science
Cardiovascular Technology
Medical Laboratory Science
Nursing
Speech-Language Pathology/Communication Disorders
Physician Assistant Studies
Public Health

Occupational Therapy
Physical Therapy
Rehabilitation Science
Medical Science
Neuroscience
Microbiology
Pharmacology
Biomedical Science
Dentistry
Dental Hygiene
Dental Laboratory Technology
Medical Technology
Clinical Rehabilitation & Counseling
Environmental & Occupational Health Sciences
Epidemiology
Biostatistics
Endodontics
Orthodontics
Periodontics
Prosthodontics
Oral and Maxillofacial Surgery
Community Health Sciences
Audiology
Human Genetics

Louisiana State University Health Sciences Center – Shreveport

Tier 2
Cardiopulmonary Science
Cardiovascular Technology
Medical Laboratory Science
Nursing
Speech-Language Pathology/Communication Disorders
Physician Assistant Studies
Public Health
Occupational Therapy
Physical Therapy
Rehabilitation Science
Medicine
Biochemistry & Molecular Biology
Cellular Biology & Anatomy
Microbiology & Immunology
Molecular & Cellular Physiology
Pathology & Translational Pathobiology
Pharmacology, Toxicology & Neuroscience
Biomedical Science
Medical Science
Medicine

Act 790 Tuition and Fee Authority

LSU

October 10, 2024



Act 790 of the 2024 Regular Legislative Session authorizes public postsecondary management boards to:

- Establish **differential tuition** for **graduate, professional, specialized** or **undergraduate high-cost** programs.
- Establish **mandatory fee amounts** and control and consolidate fee amounts.
- Increase the **differential tuition and mandatory fee amounts** by no more than **ten percent** over any **two-year period**.



High-Cost Programs



Agriculture

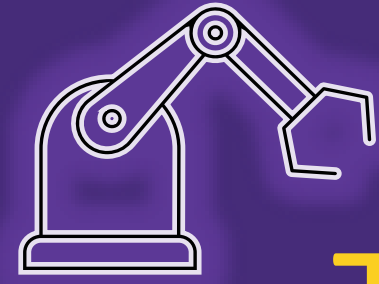
- Animal Sciences
- Agriculture Business
- Veterinary Science



Health

- Lab Technology
- Radiation Technology
- Cardiopulmonary Science
- Nursing
- Speech Pathology and Audiology

High-Cost Programs



Technology

- Engineering Technology
- Construction Management
- Advanced Manufacturing
- Digital Media Arts
- Robotics
- Wind Technology



Transportation

- Commercial Driving
- Aviation

High-Cost Programs



Visual and Performing Arts

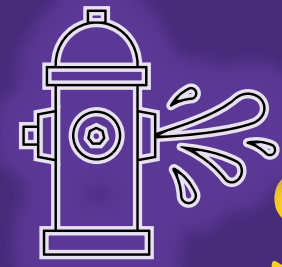
- Fine Arts
- Dance
- Music
- Theater



Precision and Construction Trades

- Welding
- Machining
- Electrical
- Culinary
- Heavy Equipment
- Line Worker

High-Cost Programs



Security and Protective Services

- Fire Science
- Forensic Science



Sciences

- Cyber Security
- Information Sciences
- Computer Science
- Lab-Based Sciences

High-Cost Programs

Engineering and Design



- Architecture
- Design
- Engineering

Other



- Business and Actuarial Sciences
- Comprehensive Transition Post Secondary Programs
- Honors

Required Fees

- ❑ Academic Excellence Fee - to enhance academic excellence
 - Hiring faculty to teach additional courses to reduce class sizes
 - Support academics such as libraries, computing, etc.

- ❑ Student Excellence Fee – to enhance the student experience both in and out of the classroom

- ❑ Technology Fee - acquisition, installation, maintenance, and use of technology

- ❑ Operational Fee – covers unfunded state mandates and enhance instruction

- ❑ Building Use Fee – to construct, acquire, repair, maintain, operate, or improve facilities and physical infrastructure



Institution	Maximum Differential Tuition Increase Fall 2025	Maximum Mandatory Fee Increase Fall 2025	Estimated Fiscal Impact
LSU	10%	10%	\$21,725,000
LSU Law	10%	10%	\$790,000
LSU Vet	10%	10%	\$1,944,000
LSU Alexandria	10%	10%	\$376,000
LSU Eunice	10%	10%	\$464,000
LSU Shreveport	N/A	N/A	N/A
LSUHSCNO	10%	10%	\$3,553,000
LSUHSCS	10%	10%	\$2,584,000
Total			\$31,436,000



Institution	Differential Tuition	Fee Increase
A&M	2%	3% Increase in Academic Excellence & Operational Fee; New 2% Undergraduate for Advising/Counseling
LSU Vet Med	5%	No Increase
LSU Law	4%	No Increase
LSUA	5%	5%
LSUE	10%	10% all mandatory fees
LSUS	No Increase	No Increase
HSCNO	10%	10% all mandatory fees
HSCS	5%	5%

Institution	Differential Tuition Revenue Increase	Fee Increase
A&M	\$2,201,000	\$8,661,000
LSU Vet Med	\$972,000	No Increase
LSU Law	\$395,000	No Increase
LSUA	\$143,000	\$45,000
LSUE	\$418,000	\$46,000
LSUS	No Increase	No Increase
HSCNO	\$2,500,000	\$1,053,000
HSCS	\$1,165,000	\$127,000



SEC PEER	2022-23	2023-24	2024-25*
Vanderbilt University	\$60,348	\$63,946	\$67,498
University of Missouri-Columbia	\$11,981	\$14,130	\$14,830
The University of Tennessee-Knoxville	\$13,244	\$13,484	\$13,812
University of Kentucky	\$12,859	\$13,212	\$13,502
Texas A & M University-College Station	\$12,605	\$12,841	\$12,930
University of South Carolina-Columbia	\$12,688	\$12,688	\$12,688
Auburn University	\$12,176	\$12,536	\$12,890
LSU	\$11,954	\$11,954	\$12,551
The University of Alabama	\$11,940	\$11,900	\$12,180
The University of Texas at Austin	\$11,698	\$11,678	\$12,968
University of Georgia	\$11,180	\$11,180	\$11,440
Mississippi State University	\$9,398	\$9,815	\$10,202
University of Arkansas	\$9,656	\$9,748	\$10,104
University of Oklahoma-Norman Campus	\$9,312	\$9,595	\$14,583
University of Mississippi	\$9,220	\$9,412	\$9,412
University of Florida	\$6,381	\$6,381	\$6,380
Average-Excl. LSU	\$14,312	\$14,836	\$15,695
* Unofficial Review of websites			
Source: IPEDS Data Center			



Board of Supervisors

PROPERTY AND FACILITIES COMMITTEE



Board of Supervisors

Request from LSU A&M to Approve an Act 959 Project for the Headhouse Renovations

Date: October 10, 2024

1. Bylaw Citation

Pursuant to Article VII, Section 1

G. Capital Improvements- Any contract or series of related contracts for the construction, renovation, or other capital improvement of buildings or other immovable property of the Board

1. Construction cost is projected to be greater than \$1 million

2. Summary of Matter

LSU Auxiliary Services is requesting project approval to renovate the Headhouse building, c. 1940, listed in the National Register of Historic Places (Historic Name: Greenhouse), to serve as a new foodservice establishment and gathering space to serve the LSU community.

The scope of work will involve interior and exterior renovations including some site improvements.

3. Review of Business Plan

A review of the Business Plan supports a recommendation for approval by the Board of Supervisors.

4. Fiscal Impact

The estimated cost of the interior and exterior renovations is \$5,700,000, including design and contingency. The information provided is sufficient to evaluate the need for the proposed project and will not have any direct fiscal impact on the University. Funding will be paid for by self-generated funds.

5. Description of Competitive Process

Design of the project will be undertaken by private Contract upon receipt of all necessary administrative approvals and all construction work will be publicly and competitively bid.

6. Review of Legal Documents

Act 959 of the 2003 Regular Legislative Session enacting R.S. 39:128(B)(4) as amended pursuant to Act No. 395 of the 2023 Regular Legislative Session establishes the requirements for exemptions from inclusion in the state capitol construction budget. "A university or higher education facility, or consortium shall be allowed to undertake any new construction, maintenance, or repair project not exceeding ten million dollars solely funded from self-generated revenues, grants, donation,

or local or federal funds without being included in the capital outlay bill provided the project is approved by the appropriate management board, Board of Regents, the Division of the Administration, Office of Facility Planning and Control, and the Joint Legislative Committee on the Budget.”

7. Parties of Interest

All of the parties relevant to the approval and construction of this project do not have any related interest in this project, nor will they receive any financial gain from its approval or construction.

8. Related Transactions

Approval by the Board of Regents, Office of Facility Planning and Control in the Division of Administration, and the Joint Legislative Committee on the Budget.

9. Conflicts of Interest

None.

10. Attachments

1. Letter from LSU President William F. Tate IV
2. Campus Correspondence and request from LSU Auxiliary Services

RESOLUTION

NOW, THEREFORE, BE IT RESOLVED that the Board of Supervisors of Louisiana State University and Agricultural and Mechanical College hereby authorizes the President of LSU, or his designee, to approve the following project and process the project through the appropriate administrative channels of review and approval, namely, the Board of Regents, the Division of the Administration, Office of Facility Planning and Control, and the Joint Legislative Committee on the Budget, pursuant to Act 959 of the 2003 Regular Legislative Session enacting R.S. 39:128(B)(4) as amended pursuant to Act No. 78 of the 2006 Regular Legislative Session and Act No. 395 of the 2023 Regular Legislative Session:

Headhouse Renovations Estimated total project cost is \$5,700,000.

BE IT FURTHER RESOLVED, that the President of LSU, or his designee, is duly authorized by and empowered for and on behalf of and in the name of the Board of Supervisors of Louisiana State University and Agricultural and Mechanical College to approve the plans and specifications for the proposed improvements and to approve cost increases up to 20% of the amount approved to accommodate unforeseen conditions.

BE IT FURTHER RESOLVED, that the LSU President for Louisiana State University, or his designee, is duly authorized by and empowered for and on behalf of and in the name of the Board of Supervisors of Louisiana State University and Agricultural and Mechanical College to take such action the he may deem in the best interest of the Board of Supervisors to process and obtain administrative approvals for this project.



Finance & Administration
Auxiliary Services

September 10, 2024

To: William F. Tate IV 
President

Through: Kimberly J. Lewis 
Executive Vice President & Chief Administrative Officer, Finance and Administration

Through: Brandi Roberts 
Associate Vice President, Finance and Administration and Chief of Staff

From: Margot Hsu Carroll 
Assistant Vice President, Auxiliary Services

Re: **Headhouse Renovations**

Auxiliary Services, through the assistance of LSU Planning, Design, and Construction (PDC), is requesting project approval to renovate the Headhouse building, c. 1940, listed in the National Register of Historic Places (Historic Name: Greenhouse). Being designated on the National Register of Historic Places will require the State Historic Preservation Office to review the drawing and proposed modifications to ensure that the renovation is appropriate. The Headhouse formerly provided access to greenhouses that extended off the rear of the building; multiple greenhouses, sheds and other horticultural houses on the same block (old Greenhouse Research buildings and fields located in the Greenhouse District at the east side of campus). With the construction of Camellia and Azalea Halls in 2021 (Greenhouse Development project), the greenhouses were demolished and only the Headhouse was preserved. The Headhouse was temporarily used as a construction office during the construction of the Greenhouse Development project, but since its completion, it has been vacant (it is not fit to be used). Once it is renovated, it will serve as a new foodservice establishment and gathering space to serve the LSU community.

The estimated total cost of this renovation is \$5,700,000, inclusive of design fees/contingency. The planned work cannot be accomplished under the normal Capital Outlay request process due to the urgency of having this work conducted during the 2025-2026 academic year and completed by August 2026 to avoid an increased risk of damage to the interior and exterior of the building the longer it sits unoccupied. With your support, we request to utilize the Act 959 Capital Construction process to expedite this project. Act 959 of 2003 (La. R.S. 39:128) permits certain capital projects to be performed by an institution without going through the traditional capital outlay process. Construction and renovation projects not exceeding \$10,000,000 from self-generated, auxiliary income are permitted through this process with proper approvals.

I appreciate your consideration in the matter and maintain that it is in the best interest of the university that this Act 959 request be approved.

Cc: Anzilla R. Gilmore, FAIA, NOMAC, Associate Vice President, Facility & Property Oversight
Paul Favalaro, Interim Executive Director, Planning, Design & Construction
Greg LaCour, Director of Campus Planning, Planning, Design & Construction



Board of Supervisors

Request from Request from LSUA Foundation to Accept Donation of Vacant Lot at 925 Jackson Street, Alexandria, Rapides Parish, Louisiana.

Date: October 10, 2024

1. Bylaw Citation

Pursuant to the Uniform Affiliation Agreement between LSU and the LSUA Foundation:

Schedule B.1(B): Accepting any donation of immovable property which is intended to be retained by Affiliate or leased to or used by LSU

2. Summary of Matter

The LSUA Foundation is seeking approval to receive a real estate donation of a small plot of land located on Jackson Street in Alexandria, near the site for the LSUA Health Education Campus.

This Jackson Street lot is a <1.0 acre that is not currently in use. It is a small remnant surrounded by a lot owned by the State of Louisiana – once used for parking – now in disrepair. The current owner, who has ties to Louisiana State University at Alexandria, has generously offered to donate the lot to the LSUA Foundation for use by the University.

LSUA previously received approval by the Board to accept the donation of the A.C. Buchanan building that currently houses the university's Allied Health Department and associated programs. This building, along with the new \$40M planned facility, will make up the downtown health education campus.

The university is in talks with Division of Administration to obtain the state-owned lot surrounding the small, privately own parcel. The full lot will be used for parking for the new campus.

3. Review of Business Plan

The initial donation of this lot will be to the LSUA Foundation. Once owned by the LSUA Foundation, an operating agreement between the LSUA Foundation and the University will be in place (should it be needed) until such time that the lot is ultimately transferred to LSUA.

4. Fiscal Impact

No significant fiscal impact in terms of operating cost is expected for LSUA based on acceptance of this donation. The appraisal is in progress and will be finalized prior to the Act of Donation. The donation is being made free and clear of any encumbrances.

5. Description of Competitive Process

Not applicable.

6. Review of Legal Documents

The Act of Donation, appraisal, and legal survey have not yet been completed. The donation will not be formally accepted until these documents have been prepared and/or reviewed by the University, LSU Facility & Property Oversight Office, the LSUA Foundation legal advisors and the LSU Office of General Counsel with all accompanying documentation.

7. Parties of Interest

Louisiana State University at Alexandria
LSUA Foundation
Angelo J. Villard Estate

8. Related Transactions

None.

9. Conflicts of Interest

None.

10. Attachments

Attachment I - Overview and Property Description of Villard Property
Attachment II - Villard Property Details.pdf

RESOLUTION

NOW, THEREFORE, BE IT RESOLVED, that the Board of Supervisors of Louisiana State University and Agricultural and Mechanical College does hereby find an Appropriate University Purpose for the LSUA Foundation to accept the donation of a vacant lot at 925 Jackson Street, Alexandria, Rapides Parish, Louisiana, provided that the Foundation shall not formally accept the donation until it has received written authorization from the President of LSU following review of the final legal documents by the appropriate LSU officials, including the Office of General Counsel.

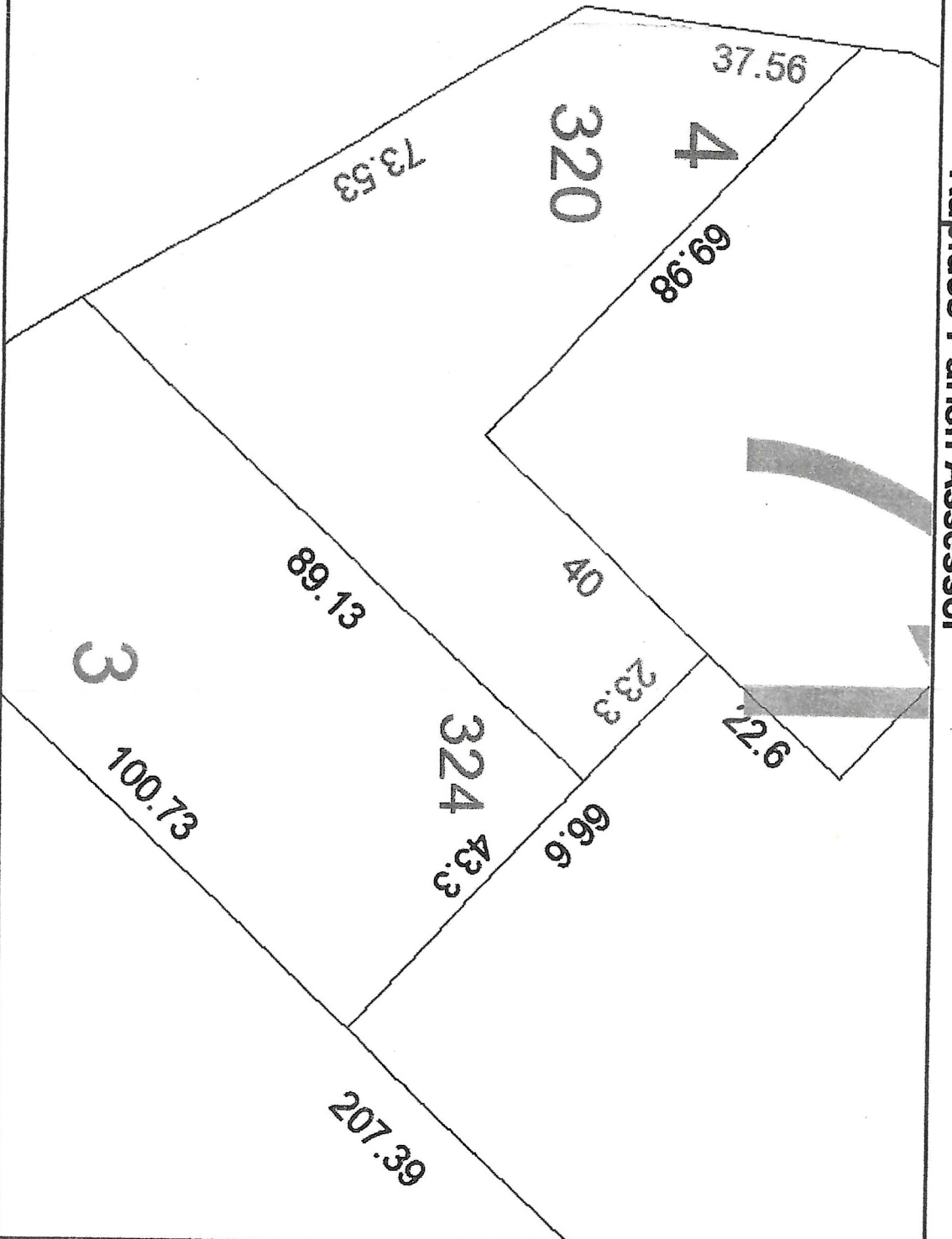
Attachment II - Overview and Property Description of Villard Property

A single parcel (2400700180032001) lot located in Alexandria, Louisiana. Parcel is located at block 7, Lot 3 in downtown Alexandria. Street address is 935 Jackson Street, Alexandria, LA. 71301.

Legal Description: --PT LOTS 3 & 4, SQ. 71, CITY OF ALEX (1500-C)---(CB 893-224)(CB 1522-133 SUCCN; VILLARD) ***PARCEL I.D. # 24-7-180-320*** (935 JACKSON ST)

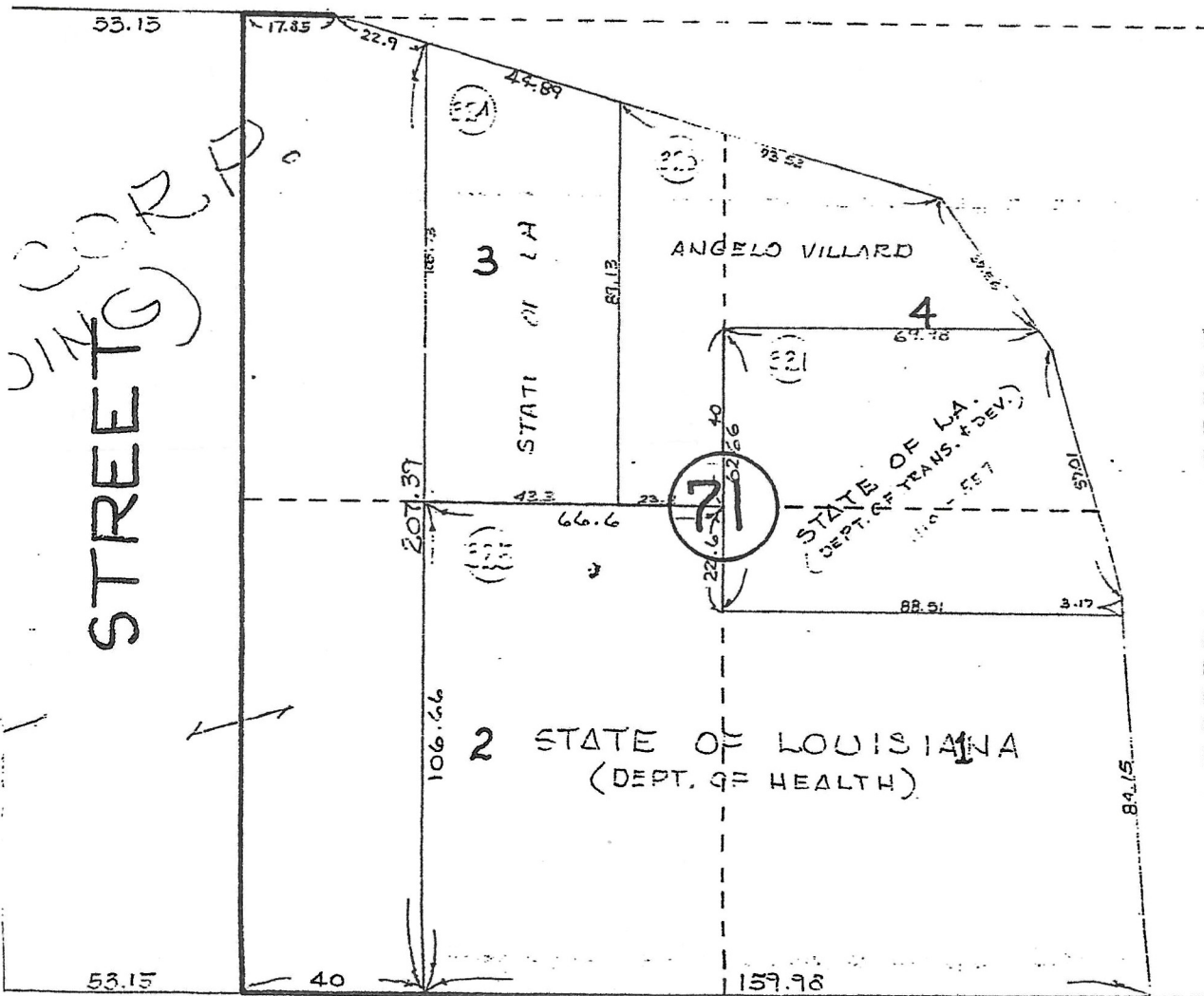


Rapides Parish Assessor



DISCLAIMER: Every reasonable effort has been made to assure the accuracy of the parcel data presented. The Rapides Parish Assessor makes no warranties, express or implied, regarding the completeness, reliability or suitability of the site data and assumes no liability associated with the use or misuse of said data. The Assessor retains the right to make changes and update data on this site at anytime without notification. The parcel data on this page map is used to locate, identify and inventory parcels of land in the Parish of Rapides for assessment purposes and is not to be used or interpreted as a legal survey or legal document. Additional data layers not originating in the Assessor's Office are also presented for informational purposes only. Before proceeding in any legal matter, all data should be verified by contacting the appropriate parish or municipal office.

STREET



STREET

[Print](#) [Map](#) [Property Tax Calculator](#)

Rapides Parish Assessor
701 Murray Street
Alexandria, LA 71309
 Tax Roll Updated 02/14/2014

YEAR	TAX ACCOUNT	ASSESSMENT	PARCEL NO.	TAX AUTHORITY	WARD	STATUS
2014	15497	1011413200	2400700180032001	ALEXANDRIA	01	ACTIVE

TAXPAYER INFORMATION	PROPERTY LOCATION
VILLARD, ANGELO J. EST 1103 CANTERBURY ALEXANDRIA, LA 71301	935 JACKSON ST ALEXANDRIA Block 71, Lot 3 <u>See other property in your subdivision on this street</u>
<input type="checkbox"/> Assessment Freeze <input type="checkbox"/> Abatement	

ALL OWNERS	ADDRESS	OWNI
VILLARD, ANGELO J. EST	ALEXANDRIA, LA 71301 VILLARD, ANGELO	100.00

ASSESSED VALUES

DESCRIPTION	UNIT	TOTAL	HOMESTEAD	TAXABLE
COMMERCIAL SUBD. LOT	1.00U	\$1,500	\$0	\$1,500
	TOTALS	\$1,500	\$0	\$1,500

ESTIMATED TAXES

PARISH WIDE TAXES	MILLAGE	TOTAL	HOMESTEAD	TAXES DUE
ASSESSOR - MAINT	2.10M	\$3.15	\$0.00	3.15
COLISEUM - BOND	2.55M	\$3.83	\$0.00	3.83
COLISEUM - MAINT	1.00M	\$1.50	\$0.00	1.50
GRAVITY DRAINAGE - MAINT	1.02M	\$1.53	\$0.00	1.53
HEALTH UNIT - MAINT	1.06M	\$1.59	\$0.00	1.59
LIBRARY - MAINT	6.26M	\$9.39	\$0.00	9.39
LIBRARY - MAINT A	1.03M	\$1.55	\$0.00	1.55
PARISH 1	2.02M	\$3.03	\$0.00	3.03
RED RIVER LEVEE	3.71M	\$5.57	\$0.00	5.57
RED RIVER WATERWAY A	1.52M	\$2.28	\$0.00	2.28
RED RIVER WATERWAY B	0.82M	\$1.23	\$0.00	1.23
RENAISSANCE - MAINT	2.06M	\$3.09	\$0.00	3.09
SCHOOL - CONSTITUTIONAL	4.93M	\$7.40	\$0.00	7.40
SCHOOL - GENERAL MAINT A	7.45M	\$11.18	\$0.00	11.18
SCHOOL - GENERAL MAINT B	12.06M	\$18.09	\$0.00	18.09
SCHOOL - GENERAL MAINT C	2.13M	\$3.20	\$0.00	3.20
SCHOOL DISTRICT 62 - BOND	9.50M	\$14.25	\$0.00	14.25
SCHOOL DISTRICT 62 - MAINT A	4.27M	\$6.41	\$0.00	6.41
SCHOOL DISTRICT 62 - MAINT B	4.25M	\$6.38	\$0.00	6.38
SENIOR CITIZEN - MAINT	1.06M	\$1.59	\$0.00	1.59
SHERIFF - MAINT A	7.86M	\$11.79	\$0.00	11.79
SHERIFF - MAINT B	9.60M	\$14.40	\$0.00	14.40
PARISH WIDE TAX TOTAL		\$132.43	\$0.00	\$132.43

MUNICIPAL TAXES

	MILLAGE	TOTAL	HOMESTEAD	TAXES DUE
ALEXANDRIA - CAPITAL IMPROVEMENTS	11.25M	\$16.88	\$0.00	16.88
ALEXANDRIA - GENERAL ALIMONY	6.83M	\$10.25	\$0.00	10.25
MUNICIPAL TAX TOTAL		\$27.13	\$0.00	\$27.13
TAX TOTAL		\$159.56	\$0.00	\$159.56

PROPERTY DESCRIPTION

---PT LOTS 3 & 4, SQ. 71, CITY OF ALEX (1500-C)---(CB 893-224)(CB 1522-133 SUCCN; VILLARD)
 PARCEL I.D. # 24-7-180-320 (935 JACKSON ST)

TRANSFER	PURCHASE PRICE	BOOK	PAGE	INSTRUMENT NO.	TYPE
1/15/1998	\$0	1522	0133		N/A

The data listed on this web site is updated weekly by the Assessor's office. For property transfers with no legal description changes, this data is updated in the Assessor's office approximately 3 to 4 weeks from the filing date as they are acquired from the Clerk of Court's office. For large tracts and descriptions that appear to be erroneous may be longer in being posted.

Property Values and Taxes will approximate until all taxing body millage resolutions are certified by the legislative auditor and the tax roll is certified by the Louisiana Tax Commission.

The user accepts the data "as is" with no guarantee or warranty of accuracy, currency, completeness, or fitness for any use.



Board of Supervisors

Request from LSU Health Sciences Center - Shreveport to Approve a Project to Expand Research Space

Date: October 10, 2024

1. Bylaw Citation

Pursuant to Article VII, Section 1

A. Any matter having a significant or long-term impact on the research mission of the University or any of its campuses.

Also pursuant to Uniform Affiliation Agreement, Section 6.2 and Exhibit B.1.C – Purchasing any immovable property with a fair market value of \$500,000 or more.

2. Summary of Matter

Through its strategic planning process, LSU Health Science Center-Shreveport (LSU Health Shreveport or LSUHS) and the Ochsner LSU Health System (OLHS) have identified a need for additional space for both the clinical enterprise and the health research program. The proposal is for the LSU Health Sciences Foundation in Shreveport (the Foundation) to purchase, with private funds, an empty building. After additional planning performed jointly by the Foundation and LSUHS, and subject to further approvals from this Board, the Foundation will cause renovations to be made to the building to transform it into appropriate clinical and research space for use by the University and its health partners. Financial and other arrangements for these renovations, and the long-term lease of space to LSU and others will be addressed at a later date, all subject to further approvals from this Board. In this item, the Board is requested to express its general agreement with the conceptual plan and to authorize the Foundation to use its private funds to purchase the building.

There is an increased demand for additional outpatient clinical practice space. The overall direction of medical treatment nationwide is shifting from the inpatient setting to outpatient. Currently, LSUHS faculty in most clinical departments see patients in dated facilities on the main Kings Highway campus. While some of this space has been updated, in many cases patients experience crowded, uninviting clinics where parking is difficult. There is clearly a need for newly constructed outpatient facilities with modern architecture and technology.

Regarding research, the current faculty has created an upward trajectory in grant funding, and LSUHS is positioned to recruit many more grant-funded scientists. Projections based on the planned pace of faculty recruitment indicate that LSUHS will be out of research space in 1.5 to 2 years.

The cost of building a new research building containing 50,000 sq ft of laboratory space is estimated to be \$100 million at a minimum. Given the trajectory of research faculty recruitment, funding this through the capital outlay process would take longer than needed to create new research space.

The solution to both space issues was found around the corner from the LSUHS campus at the former Sears at Mall St. Vincent, which has been vacant since 2018. A department store like Sears contains vast open space without walls, an ideal setting to build clinical and research space at a lower construction cost.

In July, the purchase price of the Sears property was reduced. To quickly secure the property, the Foundation purchased the Sears building and its 18 acres of property for \$3.5 million. The purchase included the 160,000 sq ft department store, a 27,000 sq ft automotive center, 50,000 sq ft of mall space, and 836 parking spaces. This purchase price is significantly below market value, and the additional parking alone is a tremendous positive benefit for the campus.

The plan is for the Foundation to finance the renovation of the department store through bond issuance. It is expected that clinical services and research labs will each occupy roughly half of the space. The Foundation would lease the clinical space to OLHS, which would make lease payments through new clinical revenue. The research space would be leased to LSUHS, which would make lease payments with indirect cost revenue recovery from the funded research conducted in the space. As noted above, all of these arrangements will be subject to further approvals by this Board.

A committee representing the Foundation, LSUHS, OLHS and LSU's Facility and Property Oversight Office will choose an architect and general contractor, following common practices used for cooperative construction projects between the University and its affiliated foundations.

The Sears project will serve as an economic engine for northwest Louisiana. Hiring research scientists and clinicians will bring these new faculty members and their families to our community, creating an economic impact multiplier effect. It will also spur desperately needed revitalization of Mall St. Vincent and the surrounding neighborhood.

3. Review of Business Plan

The long-term business plan for the property is currently under development and will be presented to the Board for further approval at an appropriate date in the future. As summarized above, it is expected that the Foundation will lease the renovated space to LSUHS and OLHS, and that the financing of the renovation construction will likely be secured by that lease. The rental payments will come from a variety of revenue sources, including revenue generated from providing clinical services in the building and indirect cost recovery from research grants. The Foundation also expects to relocate its offices to the property.

4. Fiscal Impact

The purchase price paid by the Foundation is \$3.5 million for 18 acres, including a 160,000 sf department store building, a 27,000 sf building formerly used as a car care center, approximately 50,000 sf of currently vacant mall space, and 836 parking spaces. This purchase will have no fiscal impact on LSUHS because it is paid for entirely with private dollars owned by the Foundation. LSU is not making any legally binding commitments to lease any portion of the space at this time.

Over the coming months, LSUHS leadership, the Foundation, and the Facility & Property Oversight Office in Baton Rouge will work closely together to create a long-term business and financing plan for this project. When prepared, a lease for the space between the Foundation and LSUHS/OLHS will be prepared and submitted to this Board for approval. That submission will contain the complete, comprehensive business plan for the space and all of LSUHS's financial obligations related to the space.

5. Description of Competitive Process

Not Applicable

6. Review of Legal Documents

The Resolution authorizes the President to find an Appropriate University Purpose for the Foundation to purchase this property. That document will be reviewed by the Office of General Counsel prior to execution by the President. It will not contain any legally binding financial obligations on the University.

7. Parties of Interest

LSU Health Sciences Foundation in Shreveport

8. Related Transactions

As discussed above, LSUHS and the Foundation expect to return to this Board for consideration of a request for LSUHS to lease portions of this space from the Foundation to advance the University's research and health care missions.

9. Conflicts of Interest

None known.

10. Attachments

1. Draft Finding of Appropriate University Purpose, including property diagram

RESOLUTION

NOW, THEREFORE, BE IT RESOLVED that the Board hereby authorizes the Chancellor of LSUHSC-Shreveport to work with the LSU Health Sciences Foundation in Shreveport and appropriate University officers and departments to prepare a business plan and a proposed lease of space for the former Mall St. Vincent Sears building and related space, with such business plan and proposed lease to be presented to this Board for further consideration prior to execution; and

BE IT FURTHER RESOLVED that the Board authorizes the President of LSU to find an Appropriate University Purpose, as provided for in the Uniform Affiliation Agreement, for the LSU Health Sciences Foundation to purchase, with the Foundation's own funds, the former Mall St. Vincent Sears building and related space.

LSU Health Sciences
Foundation

920 Pierremont Rd., Suite 506
Shreveport, LA 71106

O 318-861-0855
F 318-861-2855
www.lsuhsfoundation.org

September 3, 2024

William F. Tate, IV, PhD
LSU President

VIA EMAIL

Re: Determination of Acceptable Purpose - Former Sears at Mall St. Vincent

Dear President Tate,

At the request of our Chancellor, the LSUHS Foundation is under contract to purchase the former Sears property located at Mall St. Vincent in Shreveport. The property comprises 17.62 acres, including the department store (161,599 sq ft), automotive center (27,572 sq ft), and 836 parking spaces. The purchase price is \$3.5 million.

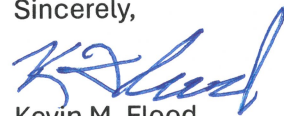
The acquisition of this property will allow LSUHS to expand its research lab space and recruit more funded researchers to our campus. It will also enable Ochsner LSU Health Shreveport (OLHS) to create new outpatient clinical space that is easily accessible to the public. The LSUHS Foundation intends to move its offices to this location and lease space to LSUHS and OLHS. It is located within a minute drive of our Kings Hwy campus. Please see the attached property map for more details.

Preliminary due diligence inspections have been completed on the property, and no unexpected results have been found.

This purchase requires LSU Presidential approval. Please sign in the space below and forward a copy to me indicating your approval. If you have any questions, please feel free to contact me.

We are enthusiastic about the future benefit this acquisition will bring to LSUHS.

Sincerely,



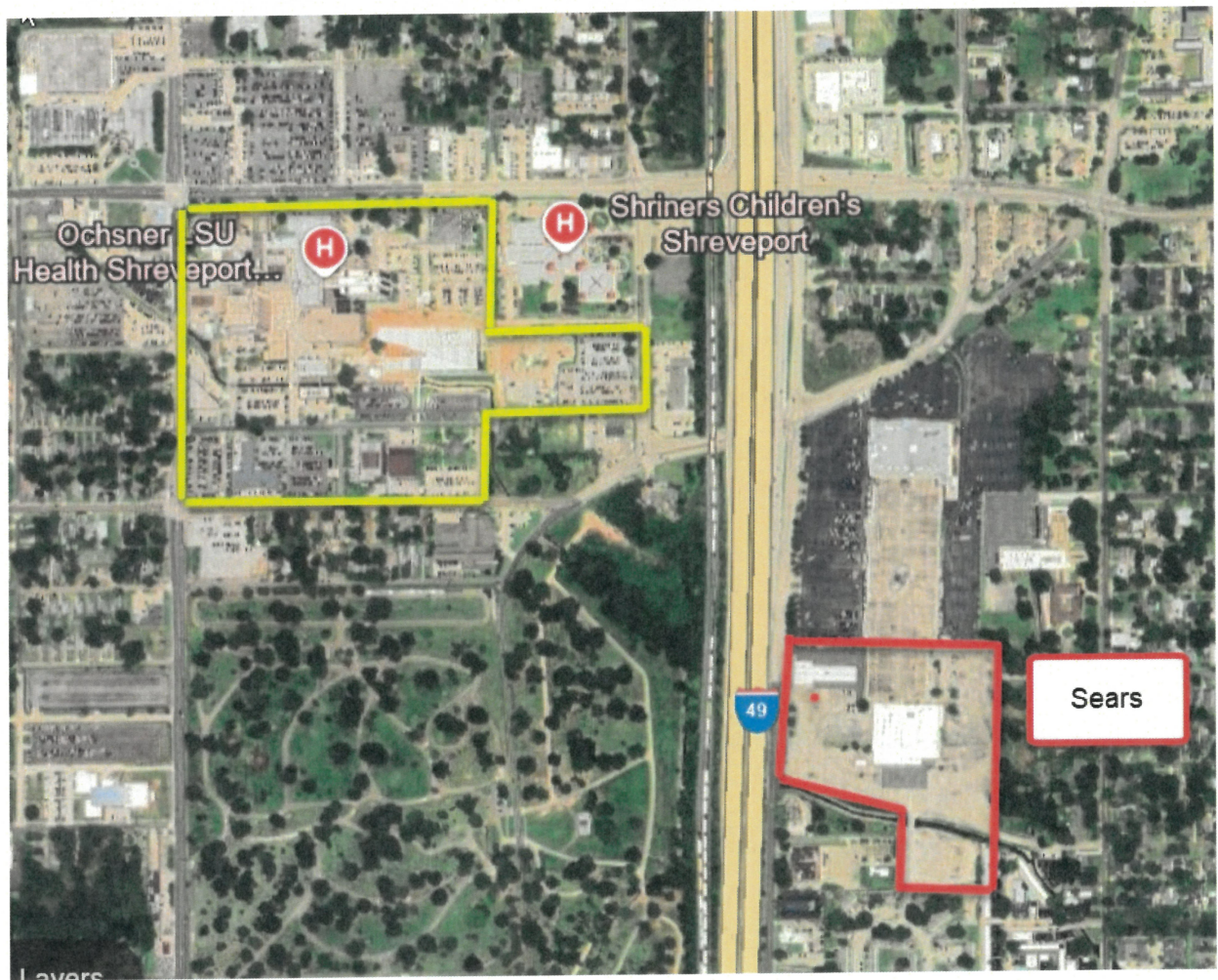
Kevin M. Flood
President and CEO

Approved:

William F. Tate, IV
LSU President

CC: Dr. David S. Guzick, Chancellor and Dean

Attachment





Board of Supervisors

Request from LSU to Approve the Schematic Design for the Julian T. White Hall

Date: October 9, 2024

1. Bylaw Citation

Pursuant to Article VII, Section 1

H. Schematic Designs: Exterior elevations of new or renovated building designs

2. Summary of Matter

The exterior brick veneer of the Julian T. White Hall building is in danger of falling in most all of the exterior wall areas. The cause is due to rainwater seepage through the roof parapet and inadequate weep holes which allows the water to escape. This caused the metal brick ties that secure the bricks to the wall structure to rust and disintegrate. The building has been vacated while an emergency project has been initiated to remove the brick and repair the damages. This project is being funded with deferred maintenance funds provided by the state.

This project will repair the damage and install a new exterior wall system that will be in compliance with new building codes, be economical, and will have a longer life expectancy than the original brick veneer. The schematic design shows a new exterior wall system that achieves these goals and will relate to the traditional campus architecture and materials.

3. Review of Business Plan

N/A

4. Fiscal Impact

There will be no fiscal impact from approval of the schematic designs.

5. Description of Competitive Process

LSU used its standard competitive processes for selection of the architect and will do so for the contractor.

6. Review of Legal Documents

Not applicable for approval of schematic design.

7. Parties of Interest

Louisiana State University
NANO Architecture + Interiors
Facility Planning and Control

8. Related Transactions

N/A

9. Conflicts of Interest

None

10. Attachments

1. Julian T. White Hall Schematic Design (Site Plan & the Exterior Elevations)

RESOLUTION

NOW, THEREFORE, BE IT RESOLVED that the Board of Supervisors of Louisiana State University and Agricultural and Mechanical College does hereby approve the Schematic Design of the new exterior envelope for the Julian T. White Hall.

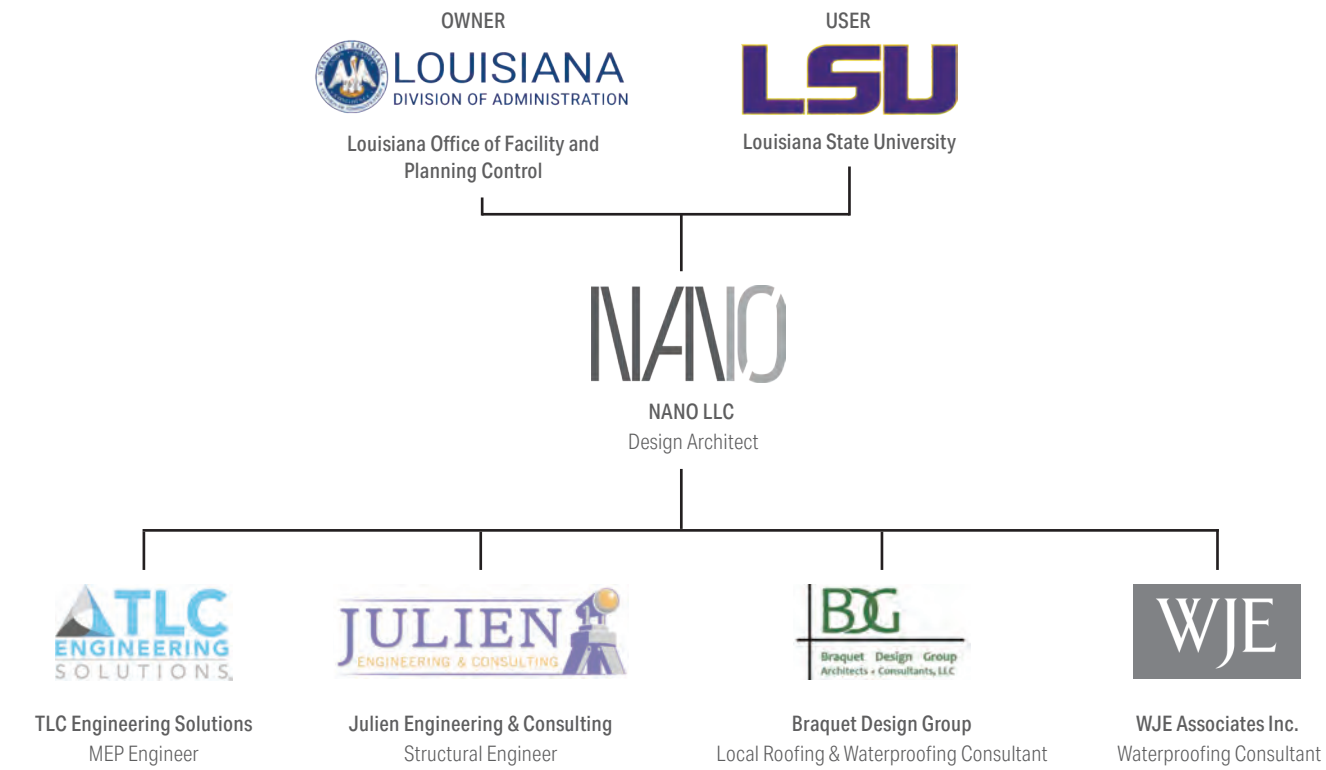
JULIAN T. WHITE HALL

100% SD DESIGN PACKAGE

SEPTEMBER 23, 2024



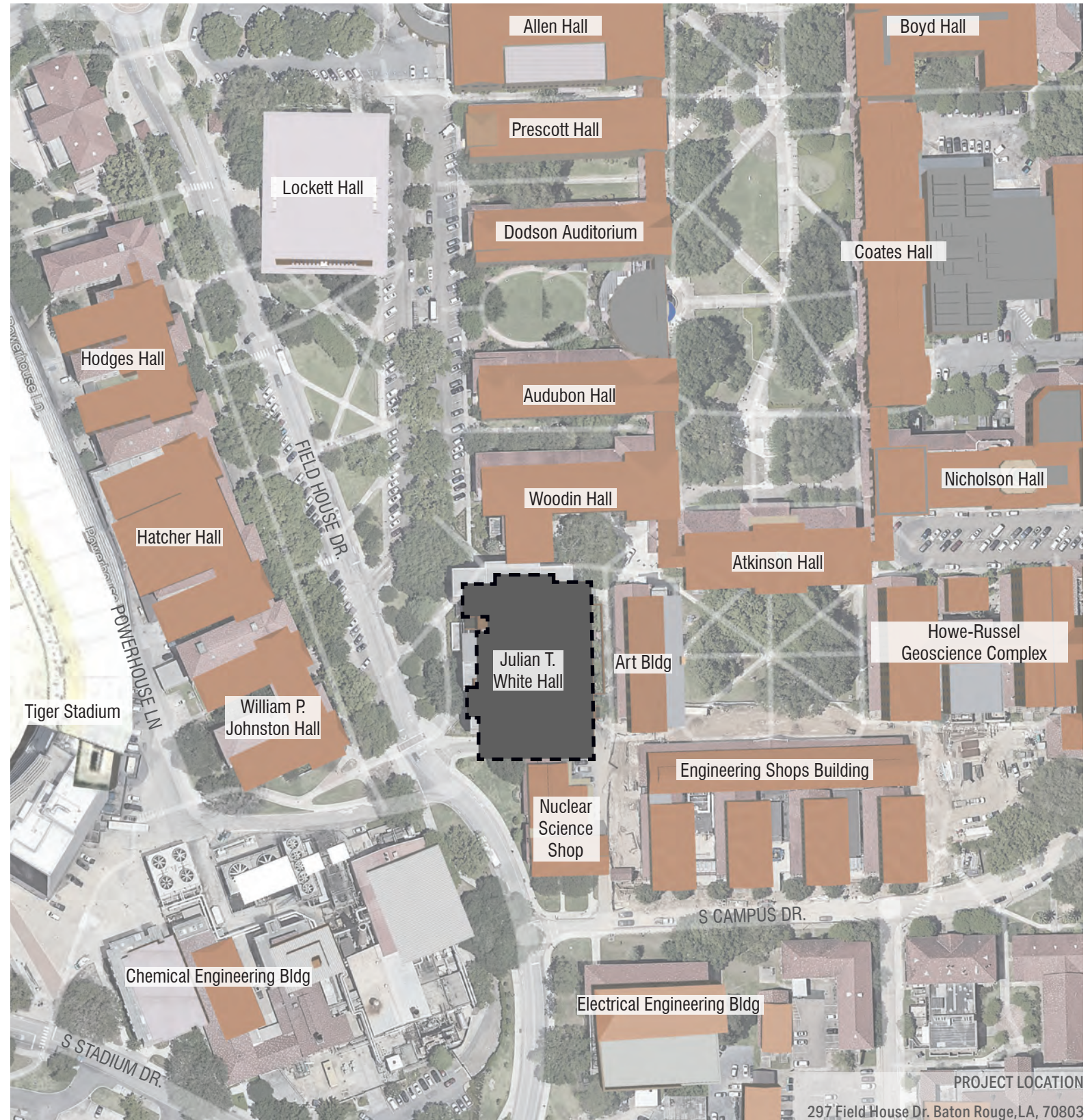
PROJECT TEAM



PROJECT DESCRIPTION

This project consists of replacing 50,000 s.f. exterior brick veneer system of the four Julian T. White Hall (formerly Design Building). The existing brick tie system has failed due to moisture intrusion. Optional veneer assemblies are to be considered with LSU approval. Asbestos containing materials may exist in the area of work and abatement design to be provided by Designer as needed in addition to scope of services. Third party sampling, testing and air monitoring will be a reimbursable expense. The Designer shall prepare and submit all required drawings to Facility Planning & Control in AutoCAD and hard copy. Drawings shall follow the format specified in the "Instructions to Designers for AutoCAD Drawings Submittal". Contract design time is 120 consecutive calendar days; including 40 days review time.

NANO aims to design a contemporary, visually appealing exterior that enhances durability and resilience against water intrusion, and also seamlessly integrates with LSU's campus while showcasing design excellence.



PROJECT LOCATION

297 Field House Dr. Baton Rouge, LA, 70803



HISTORY

The Design Building at Louisiana State University (LSU), now named Julian T. White Hall, honors the university’s first black professor who joined in 1971, marking a pivotal moment in its history of inclusivity and architectural excellence. White’s distinguished career spanned over three decades, during which he imparted knowledge to countless architecture students and also left an indelible mark on Louisiana’s architectural landscape as the state’s second licensed black architect. His influence extended far beyond the university, shaping the very fabric of the profession.

In 2020, the College of Art & Design unveiled a striking three-story mural of White in the heart of the Design Building, serving as a poignant tribute to his enduring legacy. Originally established as part of the School of Environmental Design in 1965, Julian T. White Hall has evolved into a hub of creativity and learning, embodying LSU’s commitment to fostering diverse perspectives in architectural education.

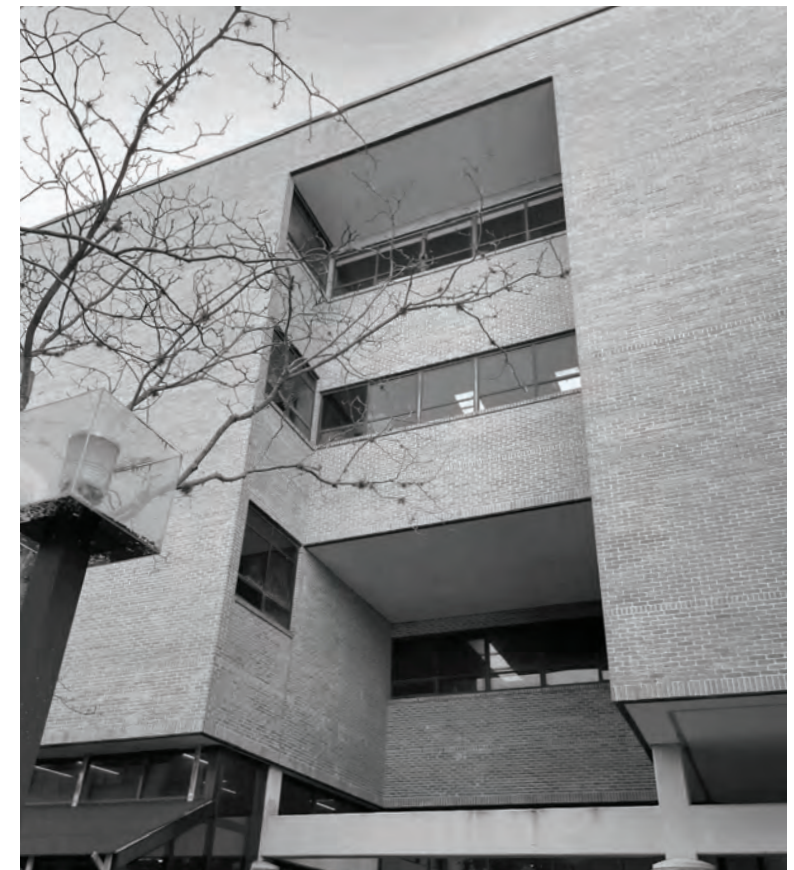
Julian T. White Hall is located in Louisiana State University’s historic landmark site designation but is listed as a “non contributing building.”....

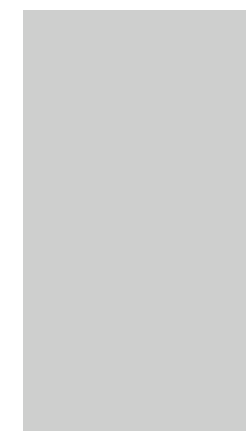
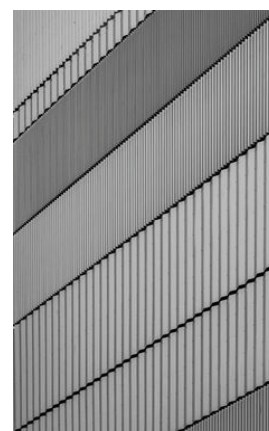
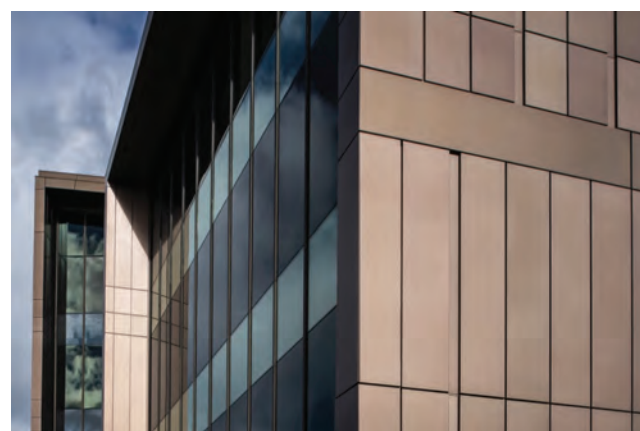
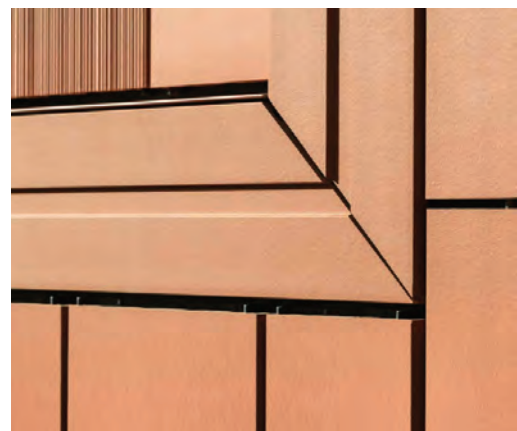
HISTORY OF EMERGENCY REPAIRS

The brick veneer on the southern end of the structure’s east face has experienced deterioration. Additional bulging of the brickwork occurred, and immediate stabilization efforts were carried out by the exploratory demolition contractor to prevent further degradation. An extensive inspection was conducted around the perimeter of the structure to assess the condition of the brick veneer in other areas. The flaking of the brick shelf angles became more severe and resulted in a significant loss of section and indicates potential issues with the load-bearing capacity and the integrity of the shelf angles. Step cracks and other forms of cracking have been more pronounced and extend further than previously observed. There were additional areas where brick bulging has increased or newly appeared since the last observation. Bulging is often a sign of moisture ingress and subsequent freeze-thaw cycles or inadequate ties between the brick veneer and the structural backing. The brick veneer of the structure showed progressive deterioration, with notable increases in flaking, cracking, and bulging. Immediate stabilization/demolition became necessary to ensure the structural integrity and safety of the building.

TYPOLGY

The existing design embraces a Brutalist aesthetic, characterized by its raw and deconstructed appearance and clad in St. Joe brick, which harmonizes with its surroundings while accentuating its secondary location on the outskirts of campus. Situated between Tiger Stadium and the sculpture quad, this strategic placement strengthens its ties to significant campus landmarks. Balconies on each floor enhance depth perception and provide crucial articulation, enriching the building’s architectural dynamics. Additionally, the diagonal linkage on the first floor fosters connections between major destinations, offers weather protection, invigorates the building’s interior with activity, and encourages interaction among students from diverse disciplines.









Board of Supervisors

ATHLETICS COMMITTEE

**Request from LSU Athletics to Increase
Softball Season Ticket Prices and Tradition Fund**

Date: October 10, 2024

1. Citation

The LSU Athletics Ticket, Parking and Tradition Fund Policy establishes the schedules approved by the board for ticket pricing for LSU Softball. An increase in the LSU Softball ticket prices and tradition fund requires the board to approve an amended schedule to the policy.

2. Summary of Matter

The LSU Athletics Department is proposing amending a portion of the LSU Athletics Ticket, Parking, and Tradition Fund Policy to adjust prices for LSU Softball starting with the 2025 season. This is the first season ticket price increase ever.

The University proposes amending Schedule C (Ticket and Tradition Fund) of the current LSU Athletics Ticket, Parking, and Tradition Fund Policy to include the following changes:

- 1) Increase Club season ticket prices, including Tradition Fund contributions, to \$400 for the 2025 season;
- 2) Increase Suite season ticket prices, including Tradition Fund contributions, to \$550 for the 2025 season; and
- 3) Eliminate season tickets and establish dynamic single game ticket prices for the chairback and bleacher seating sections starting with the 2025 season.

3. Review of Business Plan

N/A

4. Fiscal Impact

Athletics estimates the increase in revenue based upon past attendance is approximately \$252,000.

5. Description of Competitive Process

None.

6. Review of Legal Documents

None.

7. Parties of Interest

LSU Athletics

Softball season ticket holders

8. Related Transactions

None.

9. Conflicts of Interest

None.

10. Attachment

Schedule C listing details of price increases

RESOLUTION

NOW, THEREFORE, BE IT RESOLVED the Board of Supervisors of Louisiana State University and Agricultural & Mechanical College (the "Board") does hereby approve the amendment to the LSU Athletic Ticket, Parking, and Tradition Fund Policy in Schedule C for LSU Softball season ticket pricing as presented on October 10, 2024.

SCHEDULE C SOFTBALL PRICING 2025 Season – Last Updated in FY24



Area	Ticket Cost	Tradition Fund Contribution
Suite	\$200	\$350
Club	\$200	\$200
Chairback	N/A	N/A
Bleachers	N/A	N/A



Board of Supervisors

RISK MANAGEMENT COMMITTEE

LSU OFFICE OF INTERNAL AUDIT

ANNUAL REPORT

SEPTEMBER 20, 2024

TABLE OF CONTENTS

Contents

OVERVIEW	1
RISKS	2
REPORTING	3
AUDIT PROCESS	5
STAFF	6

APPENDIX A - AUDIT ACTIVITY BY FUNCTIONAL RISK CATEGORY

APPENDIX B - AUDITS COMPLETED BY CAMPUS

APPENDIX C - 2024 QAR VALIDATOR'S REPORT

OVERVIEW

VISION

To be viewed as a valued business partner and a trusted advisor and recognized as a driving force behind a culture of governance, accountability, compliance, and execution that helps in the achievement of the University's objectives.

MISSION

Internal Audit is committed to providing independent, objective, and timely service as well as responding to requests for consulting or other services, and to adding value to and improving the University's operations. Internal Audit helps the University accomplish its objectives by bringing a systematic, disciplined approach to evaluate and improve the effectiveness of risk management, control, and governance processes.

STRATEGIC GOALS

- Focus on the University's highest risks
- Provide impactful reporting to stakeholders
- Maintain efficient and effective audit processes
- Maintain an adequately skilled and knowledgeable staff

INDEPENDENCE STATEMENT

In accordance with Louisiana Revised Statute 17:3351.I, the Office of Internal Audit is maintained as an independent function that conforms to the Institute of Internal Auditors' *International Standards for the Professional Practice of Internal Auditing (Standards)*.

The *Standards* include certain elements to demonstrate that the internal audit activity is independent and internal auditors are objective in performing their work. Our Internal Audit Charter, which was adopted in June 2014 and revised in February 2024, establishes the organization and responsibilities of our office, and includes provisions to ensure independence and objectivity.

RISKS

The scope of internal audit activities is primarily defined through an annual risk assessment process, the results of which are used to establish the audit plan.

INTERNAL AUDIT'S RESPONSIBILITY REGARDING RISK

Internal Audit has responsibility for evaluating the effectiveness and efficiency of controls established by management for the purpose of managing risk. A risk is anything that could occur that would impact the achievement of an objective and is generally measured in terms of impact and likelihood.

RISK ASSESSMENT PROCESS

The purpose of our annual risk assessment is to aid the development of a risk-based plan of activities for the upcoming fiscal year. In this process, Internal Audit evaluates risk exposures relating to the University's governance, operations, and information systems regarding the following:

- Reliability and integrity of financial and operational information
- Effectiveness and efficiency of operations and programs
- Safeguarding of assets from unauthorized acquisition, use, or destruction
- Compliance with laws, regulations, policies, procedures, and contracts

Risks are identified, in part, by seeking input from executive management, operating management, and other sources including external audits, regulatory information, and industry trends.

In determining the level of risk, the following factors may be considered: inherent risk, existing internal controls, results of analytics, outcomes of previous audits, transaction volume (e.g., number or dollar amount), value-added potential, management interest, current events, emerging risks, and auditor discretion. We also rely on risks identified by management during other risk assessment activities.

To address the risk of fraud, on August 1, 2014, the University issued Permanent Memorandum (PM) 76 - Detection, Reporting, and Investigation of Incidents of Financial Irregularity. In addition, the LSU Ethics and Integrity Hotline, which is hosted by EthicsPoint, provides a secure and confidential means to report suspected fraudulent or unethical behavior.

ANNUAL AUDIT PLAN

Based on our risk assessment, an annual audit plan is developed and presented to the Board of Supervisors' Risk Management Committee for approval. Risks are classified on the audit plan by major functional category with effort budgeted in each area. A detailed list of all audit activities by functional risk category in the past 12 months is included as *Appendix A* to this report.

REPORTING

AUDIT REPORTS

Reports are issued at the end of each engagement to the President, Chancellors, and other responsible parties at each institution. Each report includes a response from management that indicates whether they concur with the findings and the corrective actions that they plan to implement to address the recommendations. The list of reports issued by campus in the previous 12 months is included as *Appendix B*.

OUTSTANDING ACTION PLANS

At the conclusion of each project, responsible management responds to each finding and recommendation with an action plan that they will implement to address the issue. Internal Audit follows-up with them at the appropriate time to determine if the corrective action was taken and if those actions adequately resolved the issue. A report on outstanding action plans is provided periodically to campus management and to the Risk Management Committee.

The following chart shows the FY 2024 action plan activity for each campus:

Campus	Carried Over to FY 2024	Added During FY 2024	Cleared During FY 2024	Pending Remediation	Under Audit Review	Open Action Plans
LSU Ag Center	31	2	0	31	2	33
LSU A&M	87	28	28	78	9	87
LSU-Alexandria	15	0	3	12	0	12
LSU-Eunice	19	0	3	1	15	16
LSU-Shreveport	24	0	1	23	0	23
LSUHSC-New Orleans	41	6	2	31	14	45
LSUHSC-Shreveport	51	4	12	20	23	43
LSU HCSD	19	0	1	18	0	18
PBRC	23	0	2	20	1	21
	310	40	52	234	64	298

Action plans considered “pending remediation” are those that are not yet due or that are between 0-99% complete. Action plans “under audit review” are those that management has indicated are 100% implemented, and Internal Audit is in the process of reviewing the provided documentation to confirm the risk is sufficiently mitigated. It should be noted that 72% of the open action plans are IT-related.

REPORTING

INVESTIGATIONS

Internal Audit is responsible for conducting investigations when allegations of fraud, conflicts of interest, or significant non-compliance with regulations or policies are reported. Reports of alleged violations are received through the LSU Ethics, Integrity, and Misconduct Helpline; phone calls or emails; through direct reports made by employees, faculty, contractors, students, vendors; or through information discovered during regularly scheduled audits and engagements requested by management.

During FY 2024, Internal Audit allocated approximately 3,000 hours to conducting or overseeing investigations related to 122 reported allegations, including 12 that were carried forward from FY 2023. Of the 110 new reports, 109 (99%) were received through the LSU Ethics, Integrity, and Misconduct Helpline. As of the report date, 14 complaints remain open for continued investigation. It should be noted that OIA directly conducted 58 investigations related to 73 reports with the remainder being assigned to other campuses, offices, or departments.

AUDIT PROCESS

To ensure an effective and efficient audit process, Internal Audit has established a Quality Assurance and Improvement Program (QAIP) designed to provide ongoing measurement and analyses of performance metrics to ensure compliance with the *Standards*.

QUALITY ASSURANCE REVIEWS

Internal Audit is required to have an external quality assurance review at least every five years. This review was completed in September 2024 with LSU Internal Audit receiving an overall rating of “generally conforms” to the *Standards*. This opinion is the highest possible rating and means that practices are in place to ensure independence, objectivity, and proficiency. The independent validator’s final report is included as *Appendix C*.

PRODUCTIVITY PERFORMANCE MEASURES

- *Audit Plan Accomplishment*

Each year, an audit plan is developed based on the results of an annual risk assessment. Risks are continually monitored, and the plan is revised to address significant changes that arise. We established a target of 75% completion of our audit plan which allows flexibility for unplanned audit work; in FY 2024, we achieved 57%. Staffing shortages were the primary contributing factor in the shortfall. The audits carried forward to FY 2025 are in various stages of completion. The chart below illustrates the status of the FY 2024 Audit Plan as of the reporting date:

FY 2024 Audit Plan Status	#	%
Audits on plan (as revised)	21	100%
Audits completed	12	57%
Audits carried forward	9	43%

- *Direct/Indirect Effort*

Audit staff allocate their time between direct and indirect hours. Direct hours include time spent working on audits, consultations, special projects, and investigations. Indirect hours include paid leave, meetings, training, and administrative tasks. The internally established goal for our staff was 75% direct audit hours, and we achieved 72% in FY 2024.

STAFF

INTERNAL AUDIT STAFFING

The following position breakdown has been in place since FY 2015:

- Audit and Enterprise Risk Management 12
- Investigative Services 2
- Information Systems Audit 1
- Administrative Support 1

DEGREES

Percent of audit staff with Bachelor's Degrees	100%
Percent of audit staff with Advanced Degrees	31%
Percent of audit staff with Professional Certifications	69%

CERTIFICATIONS (SOME STAFF HOLD MULTIPLE CERTIFICATIONS)

All staff that are not certified are currently pursuing appropriate certifications.

Certified Internal Auditor	7
Certified Public Accountant	2
Certified Fraud Examiner	2
Certified Information Systems Auditor	1
Certified Information Systems Security Professional	1
Certified in Risk and Information Systems Control	1
Certified Government Auditing Professional	1
ITIL® Foundation	1

TRAINING AND PROFESSIONAL DEVELOPMENT

Our professional audit staff completed over 600 hours of continuing professional development in FY 2024. This included training provided by the Association of College and University Auditors (ACUA), the local and national chapters of the Institute of Internal Auditors (IIA), the LSU Department of Accounting, the Health Care Compliance Association (HCCA) and others. Training ensures that staff are current on auditing best practices and helps develop subject matter expertise that is valuable to the organization.

APPENDIX A

Audit Activity by Functional Risk Category

AUXILIARY AND SERVICE DEPARTMENTS

- 2307 – LSU A&M Athletics Financial Controls
- 2406 – LSU A&M Office of Risk Management Operations

FACILITIES, CONSTRUCTION, MAINTENANCE

- 2205 – LSU A&M Facility Services Operations
- 2308 – LSU A&M P3 Project Review (REFF)
- 2309 – HSCNO P3 Project Review (HSCNOF)

GOVERNANCE AND EXTERNAL RELATIONS

- 2301 – Multi-Campus Student and Consumer Data Privacy
- 2303 – Multi-Campus Affiliated Organizations
- 2304 – Multi-Campus Data Governance
- 2401 – MULTI Civil Rights and Title IX

HEALTH OPERATIONS/PATIENT CARE

- 2408 – HSCNO Dental School Internal Controls
- 2409 – HSCNO Allied Health Internal Controls
- 2410 – HSCS Financial Management

INFORMATION TECHNOLOGY

- 2105 – Multi-Campus Patch Management
- 2204 – Multi-Campus Information Technology

PURCHASING AND WAREHOUSING

- 2403 – MULTI Procurement

RESEARCH AND DEVELOPMENT

- 2310 – HSCS Research Administration
- 2407 – AGCTR Research Administration

STUDENT SERVICES, INSTRUCTION, AND ACADEMIC SUPPORT

- 2306 – LSU A&M International Services
- 2400 – MULTI Enrollment Management
- 2402 – MULTI Student Mental Health and Wellbeing
- 2404 – LSU A&M Graduate Assistantships

APPENDIX A

OTHER AUDIT ACTIVITIES

- Information Technology (IT) support
- Follow-up on corrective action plans from prior audits
- Annual risk assessment and planning
- Enterprise risk management (ERM) program
- Quality Assessment and Improvement Program (QAIP)
- Investigations/special projects
- Management of LSU Ethics & Integrity Hotline
- Participation on campus committees
 - IT Governance Council
 - PCI Committee
 - GLBA Committee
 - Student Employment Committee
 - Benefits Oversight Committee
 - Risk, Security, & Policy Committee

APPENDIX B

Audits Completed by Campus

LSU A&M

- 2205 – Facility Services Operations
- 2306 – International Services
- 2307 – Athletics Financial Controls
- 2308 – P3 Project Review (REFF)
- 2406 – Office of Risk Management Operations

LSU HEALTH SCIENCES CENTER – NEW ORLEANS

- 2309 – P3 Project Review (HSCNOF)
- 2408 – Dental School Internal Controls
- 2409 – Allied Health Internal Controls

AGRICULTURAL CENTER

- 2407 – Research Administration

MULTI-CAMPUS

- 2105 – Patch Management
- 2204 – Information Technology
- 2303 – Affiliated Organizations

2024 AUDITS CARRIED FORWARD TO 2025:

- 2301 – Multi-Campus Student and Consumer Data Privacy
- 2304 – Multi-Campus Data Governance
- 2310 – HSCS Research Administration
- 2400 – Multi-Campus Enrollment Management
- 2401 – Multi-Campus Civil Rights and Title IX
- 2402 – Multi-Campus Student Mental Health and Wellbeing
- 2403 – Multi-Campus Procurement
- 2404 – LSU A&M Graduate Assistantships
- 2410 – HSCS Financial Management

APPENDIX C



September 4, 2024

Chad Brackin, CPA, CFE
Chief Auditor
3810 W. Lakeshore Dr. Rm. 122
Baton Rouge, LA. 70808

Subject: Quality Assurance Review - Independent Validation of Self-Assessment

Dear Mr. Brackin:

In August, the Louisiana State University (LSU) Internal Audit function completed a self-assessment of several current activities in accordance with guidelines published by the Institute of Internal Auditors (IIA) for the performance of a quality assessment review (QAR). The Internal Audit team conducted a self-assessment of its internal audit activity and selected an external assessment team comprised of audit executives from peer institutions to conduct a validation of the self-assessment.

The primary objective of the validation was to verify the assertions made in the QAR report concerning Internal Audit conformity to the IIA's *International Standards for the Professional Practice of Internal Auditing (Standards)* and Code of Ethics.

The IIA's *Quality Assessment Manual* suggests a scale of three ratings, "generally conforms," "partially conforms," and "does not conform." "Generally conforms" is the top rating and means that an internal audit activity has a charter, policies, and processes that are judged to be in conformance with the *Standards*. "Partially conforms" means deficiencies in practice are noted that are judged to deviate from the *Standards*, but these deficiencies did not preclude the IA activity from performing its responsibilities in an acceptable manner. "Does not conform" means deficiencies are judged to be so significant as to seriously impair or preclude the IA activity from performing adequately in all or in significant areas of its responsibilities.

Based on our independent validation of the QAR performed, we agree with the overall conclusion that the LSU Internal Audit function "**Generally Conforms**" with the IIA's *International Standards for the Professional Practice of Internal Auditing* and Code of Ethics. Refer to **Appendix II** for a breakdown of the assessment by *Standard*.

It is common practice on quality assessment reviews to identify program strengths, as well as develop additional opportunities for improvement based on industry best practices and observations of the review team. These recommendations are included in **Appendix I** to this memorandum.

The review team appreciates the cooperation, time, and candid feedback of executive leadership, trustees, stakeholders, and the Internal Audit team.



Undra Baldwin
Chief Audit Officer
Florida State University



Brian Daniels
Chief Audit and Compliance Officer
University of Tennessee System

Melissa Hall

Melissa Hall
Chief Compliance Officer
Emory University



Justin Noble
Chief Audit Executive
Virginia Tech

Appendix I – Additional Observations and Recommendations

Best Practices Observed

During our review, the team identified best practices worthy of mention as highlighted below.

External Stakeholders Perception

Interviews with university leaders conveyed that Internal Audit has established a positive working relationship with individuals across the state. Constituents indicated appreciation for the collaborative spirit with audits, investigations, and committee engagement.

Professional Staff Geared Toward Value-added Activities

Work performed by Internal Audit was professional in nature and thought to be adding value to the university in the spirit of continuous improvement. There was a sentiment amongst some of those interviewed that the staff does a great job with the resources available, and Internal Audit leadership should continue to evaluate staffing levels and risk coverage.

Robust and Inclusive Risk Assessment Process

University leadership expressed appreciation for the collaborative spirit in the annual risk assessment process that is conducted as part of developing the annual audit plan. Giving voice to various leaders across the university has yielded buy-in for the department's work and reduces barriers to achievement for Internal Audit staff.

Chief Auditor Reporting Lines & Organizational Structure

The dual reporting line for the Chief Auditor, functionally to the Chair of the Risk Management Committee of the Board of Supervisors and administratively to the LSU President, is considered best practice in the industry. This approach supports key professional relationships with senior leadership and clarifies operating independence to best serve the university.

Use of Outsourcing and Co-Sourcing Engagements

Internal Audit has been effectively supplementing their audit coverage through engagement with leading audit firms to conduct engagements and assess risk. This approach expedites the ability of Internal Audit to provide assurance regarding high-risk topics such as IT operations and IT security.

Audit Software System Deployment

Internal Audit has recently deployed a "best in class" software solution with an eye toward improving processes, strong engagement with clients, and increased automation in key activities such as audit follow-up. While continued refinements will occur, the department's focus on continued improvement is commendable.

Opportunities for Enhancement

The review team identified opportunities to continue to move Internal Audit forward as follows:

Internal Audit External Engagement

Several current and recent historical examples of Internal Audit engagement with a variety of stakeholder groups were identified as a positive attribute of the department. Internal Audit should continue to identify additional strategic opportunities to engage with university

stakeholder groups including faculty, staff, and administrative leadership to promote the utility and value of the office.

Internal Audit Staffing and Resources

While the responses from senior leadership indicated a belief in the quality of the work product generated by the Internal Audit office, discussion with leadership indicated that the team could address more of the identified risks with additional staffing. Some additional considerations include further investing in the aforementioned co-sourcing engagements to supplement the existing expertise in addressing risks. Additionally, stakeholders were supportive of the Internal Audit office considering utilizing consulting projects to conduct focused reviews in contrast to the larger risk-based engagements, which may increase efficiency with existing limited resources.

Risk Identification and Follow-up Process

There may be an opportunity to better engage with management and the board as it relates to outstanding audit recommendations and action plans. More specifically, given the complicated nature of the issues and the resulting complex management remediation plans when significant progress is made in implementing the ascribed management action plans, these efforts can be recognized in reducing the risk profile in external reports and board discussion to ensure executive leadership and the board remain focused on the highest risk items that remain outstanding.

Appendix II – Detailed Conformance with IIA Standards

Attribute Standards

Standard	GC	PC	DNC
1000 Purpose, Authority, and Responsibility	X		
1010 – Recognition in the Internal Audit Charter	X		
1100 Independence and Objectivity	X		
1110 – Organizational Independence	X		
1111 – Direct Interaction with the Board	X		
1120 – Individual Objectivity	X		
1130 – Impairments to the Independence or Objectivity	X		
1200 Proficiency and Due Professional Care	X		
1210 – Proficiency	X		
1220 – Due Professional Care	X		
1230 – Continuing Professional Development	X		
1300 Quality Assurance Improvement Program	X		
1310 – Quality Program Assessments	X		
1311 – Internal Assessments	X		
1312 – External Assessments	X		
1320 – Reporting on the Quality Program	X		
1330 – Use of “Conducted in Accordance with Standards”	X		
1340 – Disclosure of Noncompliance	X		

Performance Standards

Standard	GC	PC	DNC
2000 Managing the Internal Audit Activity	X		
2010 – Planning	X		
2020 – Communication and Approval	X		
2030 – Resource Management	X		
2040 – Policies and Procedures	X		
2050 – Coordination	X		
2060 – Reporting to the Board and Senior Management	X		
2070 – External Service Provider and Organizational Responsibility for IA	X		
2100 Nature of Work	X		
2110 – Governance	X		
2120 – Risk Management	X		
2130 – Control	X		
2200 Engagement Planning	X		
2201 – Planning Considerations	X		
2210 – Engagement Objectives	X		
2220 – Engagement Scope	X		
2230 – Engagement Resource Allocation	X		
2240 – Engagement Work Program	X		
2300 Performing the Engagement	X		
2310 – Identifying Information	X		
2320 – Analysis and Evaluation	X		
2330 – Documenting Information	X		
2340 – Engagement Supervision	X		
2400 Communicating Results	X		
2410 – Criteria for Communication	X		
2420 – Quality of Communications	X		
2421 – Errors and Omissions	X		
2430 – Engagement Disclosure of Noncompliance with Standards	X		
2440 – Disseminating Results	X		
2450 – Overall Opinions	X		
2500 Monitoring Progress	X		
2600 Management’s Acceptance of Risks	X		



Board of Supervisors

MEETING MINUTES

MINUTES
LSU BOARD OF SUPERVISORS PROFESSIONAL DEVELOPMENT
*Board Room, LSU Foundation Center for Philanthropy
3796 Nicholson Drive, Baton Rouge, LA 70808
Thursday, September 5, 2024 | 1:30 p.m. CT*

I. Call to Order and Roll Call

Mr. Jimmies Woods called to order the Professional Development meeting for the Board of Supervisors of Louisiana State University and Agricultural and Mechanical College on September 5, 2024.

Present

Mr. Jimmie Woods
Ms. Laurie Lipsey Aronson
Mr. Scott Ballard
Ms. Rebecca Boniol
Mr. John Carmouche
Ms. Esperanza Moran
Mr. Randy Morris
Ms. Emily Otken
Mr. Rémy Starns
Mr. Collis Temple
Mr. Blaise Zuschlag

Absent

Mr. Patrick Morrow
Ms. Valencia Jones
Mr. Glenn Armentor
Mr. James Williams

Also participating in the meeting was Mr. Winston DeCuir, General Counsel for LSU.

II. Public Comment

There were no persons registered for public comment.

III. LSU Foundation Overview and Update

Robert Stuart, President and CEO of the LSU Foundation, gave an overview of the Foundation and its affiliation with the university.

IV. Adjournment

Upon motion by Ms. Moran, seconded by Ms. Otken, the meeting was adjourned.

MINUTES
LSU BOARD OF SUPERVISORS
EXECUTIVE COMMITTEE MEETING
*Board Room, LSU Foundation Center for Philanthropy
3796 Nicholson Drive, Baton Rouge, LA 70808
Thursday, September 5, 2024 | 3:00 p.m. CT or Upon Adjournment of Professional Development*

I. Call to Order and Roll Call

Mr. Jimmies Woods called to order the Executive Committee of the Board of Supervisors of Louisiana State University and Agricultural and Mechanical College on September 5, 2024.

Present

Mr. Jimmie Woods
Ms. Laurie Lipsey Aronson
Mr. Scott Ballard
Mr. Rémy Starns

Absent

Ms. Valencia Jones
Mr. Lee Mallett
Mr. Patrick Morrow
Mr. James Williams

A quorum was not present.

Also participating in the meeting was Mr. Winston DeCuir, Jr., General Counsel for LSU.

II. Public Comment

There were no persons registered for public comment.

III. Bylaw Review

Executive Director and Senior Advisor gave a brief overview of the proposal for bylaw changes requested from the prior executive meeting on July 19th, 2024.

General Counsel answered questions on details regarding the proposed bylaw changes.

Mr. Rémy Starns proposed additional changes to the bylaws.

This meeting gave notice to the Supervisors for Bylaws to be considered for the October Executive Committee Board of Supervisors meeting.

IV. Adjournment

The meeting was adjourned without a quorum.

MINUTES
LSU BOARD OF SUPERVISORS
HEALTHCARE AND MEDICAL EDUCATION COMMITTEE MEETING
*Board Room, LSU Foundation Center for Philanthropy
3796 Nicholson Drive, Baton Rouge, LA 70808
Thursday, September 5, 2024 | Upon Adjournment of the Executive Committee*

I. Call to Order and Roll Call

Mr. Esperanza Moran called to order the Healthcare and Medical Education Committee meeting for the Board of Supervisors of Louisiana State University and Agricultural and Mechanical College on September 5, 2024.

Present

Ms. Esperanza Moran
Mr. Scott Ballard
Mr. John Carmouche
Mr. Randy Morris
Ms. Emily Otken

Absent

Ms. Valencia Jones
Mr. James Williams

Also participating in the meeting was Mr. Winston DeCuir, General Counsel for LSU.

II. Public Comment

There were no persons registered for public comment.

III. Committee Overview

The chair shared an update with the board on issues she discussed with the chancellor of LSU Health Science Center Shreveport and noted that she may call future meetings with this committee.

IV. Adjournment

Upon motion by Mr. Ballard, seconded by Mr. Morris, the meeting was adjourned.

MINUTES
LSU BOARD OF SUPERVISORS MEETING
*Board Room, University Administration Building
3810 West Lakeshore Drive, Baton Rouge, LA 70808
Friday, September 6, 2024 | 9:00 a.m. CT*

I. Call to Order and Roll Call

Mr. Jimmie Woods, Chair, called to order the Regular Meeting of the Board of Supervisors of Louisiana State University and Agricultural and Mechanical College on September 6, 2024.

Present

Mr. Jimmie Woods, Chair
Ms. Valencia Sarpy Jones, Past-Chair
Ms. Laurie Lipsey Aronson
Mr. Scott Ballard
Ms. Rebecca Boniol
Mr. Carmouche
Mr. Lee Mallett
Ms. Esperanza Moran
Mr. Randy Morris
Ms. Emily Otken
Mr. Rémy Starns
Mr. Collis Temple Jr.
Mr. Blaise Zuschlag

Absent

Mr. Patrick C. Morrow, Vice-Chair
Mr. Glenn Armentor
Mr. James Williams

Also participating in the meeting were the following: Dr. William F Tate IV, President of LSU; Mr. Winston DeCuir, Jr., General Counsel for LSU; University officer and administrators of the campuses; faculty and staff representatives; interested citizens and representatives of the news media.

II. Invocation and Pledge of Allegiance

The LSU Chapter of the Pershing Rifles presented the Colors.

The invocation was offered by Kennedy Guidry, an LSU A&M Junior, and the pledge given by our University Lab School 1st graders in Ms. Day's class.

III. Oaths of Office

Mr. Blaise Zuschlag was sworn in by Monica Zuschlag as a supervisor member at large.

IV. Public Comment

There were not any individuals registered for public comment.

Aimee Simon, Founder of Bengal Belles, delivered an informative presentation on the Bengal Belles, a woman-led LSU booster organization.

V. Committee Meetings

Mr. Woods adjourned the regular meeting to convene the committee meetings.

5.A. **Research & Agricultural Extension Committee**

Present for the Research and Agricultural Extension Committee were Mr. Temple, Mr. Morris, Ms. Boniol, Ms. Moran, Mr. Mallett, Ms. Otken, and Mr. Starns.

5.A.1 Forecasting Compound

Dr. George Xue, Professor in the Department of Oceanography & Coastal Sciences, delivered an informative presentation on forecasting compound flooding.

No action needed on this item.

5.B. **Academic Committee**

Present for the Academic Committee were Ms. Boniol, Ms. Jones, Mr. Mallett, Ms. Otken, Mr. Starns and Mr. Temple.

5.B.1 Request from LSU A&M to Establish a Bachelor of Arts in Energy, Environment & Sustainability

Upon motion by Mr. Mallett, seconded by Ms. Otken, the item was unanimously approved.

NOW, THEREFORE, BE IT RESOLVED that the Board of Supervisors of Louisiana State University and Agricultural & Mechanical College does hereby approve the request from LSU A&M to establish the Bachelor of Arts in Energy, Environment & Sustainability.

5.B.2 Request from LSU A&M to Establish a Bachelor of Science in Fire & Emergency Management Administration.

Upon motion by Mr. Mallett, seconded by Mr. Starns, the item was unanimously approved.

NOW, THEREFORE, BE IT RESOLVED that the Board of Supervisors of Louisiana State University and Agricultural & Mechanical College does hereby approve the request from LSU A&M to establish the Bachelor of Science in Fire & Emergency Management Administration

5.B.3 Request from LSU Health Sciences Center – Shreveport to Establish the Jonathan Glass, MD and Cherie-Ann Nathan, MD Endowed Professorship in Otolaryngology/Head and Neck Surgery

Upon motion by Ms. Jones, seconded by Mr. Starns, the item was unanimously approved.

NOW, THEREFORE, BE IT RESOLVED that the Board of Supervisors does hereby approve the request from LSU Health Sciences Center in Shreveport to establish the Jonathan Glass, MD & Cherie-Ann Nathan, MD Endowed Professorship in Otolaryngology/Head and Neck Surgery

5.C. **Finance Committee**

Present for the Finance Committee were Mr. Mallett, Mr. Ballard, Ms. Aronson, Ms. Boniol, Mr. Carmouche, and Mr. Morris.

5.C.1 Recommendation to Approve the Fiscal Year 2024-2025 Operating Budget

Upon motion by Mr. Ballard, seconded by Mr. Morris, the item was unanimously approved.

NOW, THEREFORE, BE IT RESOLVED that the Board of Supervisors of Louisiana State University and Agricultural & Mechanical College does hereby approve the operating budget for the fiscal year ending June 30, 2025, providing:

(a) Final approval and commitment authorization of funds for unrestricted educational and general, medical, and related expenses in the amount of \$1,397,142,621 for the campuses shown below.

LSU A&M
LSU Agricultural Center
LSU Alexandria
LSU Eunice
LSU Shreveport
LSU Health Sciences Center, New Orleans
LSU Health Sciences Center, Shreveport
LSU Pennington Biomedical Research Center
The Hospital and Central Office of the LSU Health Care Services Division

(b) Commitment authorizations for auxiliary enterprises, grants and contracts, and other restricted funds estimated to be \$2,289,371,008.

(c) Transactions included or referred to in the operating budget that otherwise require Board approval are not approved by mere inclusion in the operating budget.

BE IT FURTHER RESOLVED that each campus shall prepare a semi-annual financial report. The format of the report will include the following:

1. Budget and actual for unrestricted revenues by source of funds
2. Actual for unrestricted expenditures by object and by function
3. Beginning account balances and actual revenues and expenditures/transfers for restricted operations
4. Any significant changes in the budget that should be brought to the attention of the President and Board
5. An explanation of any significant reduction in anticipated revenues or significant increase in expenditures

Any subsequent modification to the reporting format will be approved by the President with notification to the Board.

5.D. **Property & Facilities Committee**

Present for the Property & Facilities Committee were Ms. Aronson, Mr. Ballard, Mr. Boniol, Mr. Mallett, Mr. Morris, and Ms. Otken

5.D.1 Request for Approval of the FY 2025-2026 Five-Year Capital Outlay Budget Request and First Year Prioritized List for Louisiana State University

Upon motion by Mr. Ballard, seconded by Mr. Mallett, the item was unanimously approved.

NOW, THEREFORE, BE IT RESOLVED by the Board of Supervisors of Louisiana State University and Agricultural and Mechanical College that the following list of projects to be submitted to the Division of Administration in accordance with the provisions of La. R.S. 39:101 et seq. and first year prioritized project list is approved and;

BE IT FURTHER RESOLVED, that the President of Louisiana State University, or his or her designee, be and he is hereby authorized to make adjustments as necessary in this request as circumstances dictate, including technical corrections, increasing or decreasing the amount requested for individual projects by not more than twenty percent (20%) of the amount approved in this resolution, combining or renaming projects and/or changing sources of funds and to add self-generated projects with individual project costs of less than \$1 million without further approval by the Board, provided, however, that such project additions be reported to the Board.

BE IT FURTHER RESOLVED that transactions included or referred to in the capital outlay request that otherwise require Board approval are not approved by inclusion in the capital outlay request per Article VII, Section 2, A of the Bylaws.

5.D.2 Recommendation from LSU A&M to Authorize the President to Execute a Lease with Tiger Athletic Foundation for Resurfacing Portions of Bernie Moore Track Stadium

Upon motion by Mr. Ballard, seconded by Ms. Otken, the item was unanimously approved.

NOW, THEREFORE, BE IT RESOLVED that the Board authorizes William F. Tate IV, in his capacity as President of LSU, to execute a lease to Tiger Athletic Foundation in order to facilitate improvements Bernie Moore Track Stadium, including resurfacing of certain portions of the artificial track surfaces, and to execute related agreements as may be reasonably necessary to facilitate the project;

BE IT FURTHER RESOLVED that the Board, pursuant to the Uniform Affiliation Agreement between it and the Tiger Athletic Foundation, finds an acceptable University purpose for Tiger Athletic Foundation to enter into the proposed lease, and any related or ancillary contracts and agreements reasonably necessary for the project; and,

BE IT FURTHER RESOLVED that William F. Tate IV, in his capacity as President of LSU, or his designee, is hereby authorized by and empowered for and on behalf of and in the name of the Board of Supervisors, to include in the lease any and all provisions and stipulations that he deems in the best interest of the Board of Supervisors.

5.D.3 Request from LSU A&M to Approve Delta Zeta House and New Lease

Upon motion by Mr. Mallett, seconded by Mr. Ballard, the item was unanimously approved.

NOW, THEREFORE, BE IT RESOLVED that the Board of Supervisors of Louisiana State University and Agricultural and Mechanical College hereby authorizes the President of LSU or designee to execute: (1) an Amended and Restated Lease Agreement with Delta Zeta National Housing Corporation or such other related entity designed by Delta Zeta, and (2) any other agreements, consents, approvals, or other documents needed to effectuate this transaction, with all

leases, agreements, consents, approvals, and other documents to contain such terms and conditions as the President, in consultation with the General Counsel, deems to be in the best interests of LSU; and

BE IT FURTHER RESOLVED that the Board of Supervisors of Louisiana State University and Agricultural and Mechanical College approves the construction of capital improvements in an amount exceeding \$1 million at the Delta Zeta House, subject to final reviews, approvals, and authorizations to proceed issued by the appropriate LSU officials in accordance with law, policy, and established practices; and

BE IT FURTHER RESOLVED that the Board of Supervisors of Louisiana State University and Agricultural and Mechanical College does hereby acknowledge that the schematic designs for the new Delta Zeta House are in general compliance with the Campus Design Guidelines and hereby delegates the approval of the detailed plans and specifications to the appropriate and customary LSU Office responsible for reviewing and approving such plans and specifications.

5.D.4 Request to Acknowledge and Authorize the Fifth Amendment to the Amended and Restated Master Hospital Lease

Upon motion by Mr. Mallett, seconded by Mr. Ballard, the item was unanimously approved.

NOW, THEREFORE, BE IT RESOLVED that the Board of Supervisors of Louisiana State University and Agricultural and Mechanical College hereby authorizes the President of LSU or designee to execute the Fifth Amendment to the Amended and Restated Hospital Lease between LSU, the University Medical Center Management Corporation, and the State of Louisiana, through the Division of Administration, with such amendment to contain such terms and conditions as the President, in consultation with the General Counsel, deems to be in the best interests of LSU.

5.D.5 Request from LSU A&M to Approve Lease of Space for LSU Online

Upon motion by Mr. Mallett, seconded by Ms. Otken, the item was unanimously approved.

NOW, THEREFORE, BE IT RESOLVED that the Board of Supervisors of Louisiana State University and Agricultural and Mechanical College hereby authorizes the President of LSU or designee to execute (i) a lease with Twelve United Plaza, LLC and the Division of Administration for office space in United Plaza XII, (ii) a termination of the lease with the LSU Research Foundation for the LSU Online space in the LETC building, and (iii) any other requests, 3 agreements, consents, approvals, or other documents needed for this transaction, with all leases, agreements, consents, approvals, and other documents to contain such terms and conditions as the President, in consultation with the General Counsel, deems to be in the best interests of LSU.

5.E. **Athletics Committee**

Present for the Athletics Committee were Mr. Ballard, Ms. Jones, Ms. Boniol, Mr. Carmouche, Mr. Morris, Mr. Starns, and Mr. Temple.

5.E.1 Request from LSU Athletics to Approve New Employment Agreement for Men's Basketball Assistant Coach

Upon motion by Mr. Starns, seconded by Mr. Carmouche, the item was unanimously approved.

NOW, THEREFORE, BE IT RESOLVED the Board of Supervisors of Louisiana State University and Agricultural & Mechanical College approves the Employment Agreement for Casey Long as described in this item and authorizes President William F. Tate IV to execute the Employment Agreement in consultation with the Office of General Counsel.

- 5.E.2 Request from LSU Athletics to Approve New Employment Agreement for Women's Golf Head Coach

Upon motion by Ms. Jones, seconded by Mr. Carmouche, the item was unanimously approved.

NOW, THEREFORE, BE IT RESOLVED the Board of Supervisors of Louisiana State University and Agricultural & Mechanical College approves the Employment Agreement for Garrett Runion as described in this item and authorizes President William F. Tate IV to execute the Employment Agreement in consultation with the Office of General Counsel.

- 5.E.3 Request from LSU A&M to Approve First Amendment to Employment Agreement for Men's and Women's Track & Field Head Coach

Upon motion by Mr. Starns, seconded by Mr. Morris, the item was unanimously approved.

NOW, THEREFORE, BE IT RESOLVED the Board of Supervisors of Louisiana State University and Agricultural & Mechanical College authorizes President William F. Tate IV, or his designee, to execute the First Amendment to Employment Agreement for Dennis Shaver as described in this item, in consultation with General Counsel.

- 5.E.4 Request from LSU Shreveport to Approve New Employment Agreement for Women's Basketball Head Coach

Upon motion by Ms. Jones, seconded by Mr. Temple, the item was unanimously approved.

NOW, THEREFORE, BE IT RESOLVED the Board of Supervisors of Louisiana State University and Agricultural & Mechanical College approves the Employment Agreement for Timothy Hayes as described in this item and authorizes the Chancellor of LSUS to execute the Employment Agreement in consultation with the Office of General Counsel.

- 5.E.5 Request from LSU Shreveport to Approve New Employment Agreement for Athletics Director

Upon motion by Mr. Temple, seconded by Mr. Morris, the item was unanimously approved.

NOW, THEREFORE, BE IT RESOLVED the Board of Supervisors of Louisiana State University and Agricultural & Mechanical College approves the Employment Agreement for Lucas Morgan as described in this item and authorizes the Chancellor of LSUS to execute the Employment Agreement in consultation with the Office of General Counsel.

5.G. **Risk Management Committee**

Present for the Risk Management Committee were Mr. Starns, Ms. Aronson, Mr. Ballard, Ms. Boniol, Mr. Carmouche, Mr. Mallett, Ms. Moran, Mr. Morris, Ms. Otken, Mr. Temple, and Mr. Zuschlag.

Also present were Mr. Chad Brackin, Chief Internal Auditor, and Ms. Stephanie Rhodes.

5.G.1 FY 2024 4th Quarter Audit Summary

Upon motion by Mr. Temple, seconded by Ms. Moran, the item was unanimously approved.

5.G.2 Affiliates Update

No action needed on this item.

5.G.3 LSU Health Science Center – Shreveport Accreditation Preparation Update

No action needed on this item.

5.G.4 Adjournment

Upon motion by Mr. Ballard, seconded by Mr. Morris, the Risk Management Committee was adjourned.

VI. Reconvene Board Meeting

The regular meeting was called back to order and roll call conducted.

Present

Mr. Jimmie Woods, Chair
Ms. Valencia Sarpy Jones, Past-Chair
Ms. Laurie Lipsey Aronson
Mr. Scott Ballard
Ms. Rebecca Boniol
Mr. John Carmouche
Mr. Lee Mallett
Ms. Esperanza Moran
Mr. Randy Morris
Ms. Emily Otken
Mr. Rémy Starns
Mr. Collis Temple Jr.
Mr. Blaise Zuschlag

Absent

Mr. Patrick C. Morrow, Vice-Chair
Mr. Glenn Armentor
Mr. James Williams

VII. Approval of Meeting Minutes

- A. Approval of Meeting Minutes from the June 27, 2024 Board Professional Development
- B. Approval of Meeting Minutes from the June 28 Board Meeting
- C. Approval of Meeting Minutes from the July 18, 2024 Finance Committee Meeting
- D. Approval of Meeting Minutes from the July 18, 2024 Executive Committee Meeting
- E. Approval of Meeting Minutes from the August 9, 2024 Finance Committee Meeting
- F. Approval of Meeting Minutes from the August 9, 2024 External Affairs Committee Meeting

Upon motion by Mr. Mallett, seconded by Mr. Ballard, the minutes were unanimously approved.

VIII. Reports to the Board

Upon motion by Mr. Temple, seconded by Ms. Aronson, the Reports to the Board were unanimously received.

IX. Reports from Faculty and Staff Advisors

Dr. Daniel Tirone provided an informative report on behalf of the Faculty Advisors.

Ms. Olivia Phelps, LSU A&M Staff Senate President, provided an informative report on behalf of the Staff Advisors.

X. President's Report

The president provided an informative report.

XI. Approval of Committee Recommendations

Upon motion by Mr. Morris, seconded by Ms. Jones, the item was unanimously approved.

XII. Chairman's Report

Chairman Woods provided an informational report.

XIII. Adjournment

Upon motion by Ms. Moran, seconded by Ms. Jones, the meeting was adjourned.

Personnel Actions Requiring Board Approval
per PM-69

October 10, 2024

Personnel Actions Requiring Board Approval per PM-69
October 10, 2024

LSU A&M
Salary Adjustment

<u>Name</u>	<u>Title</u>	<u>Effective Date</u>	<u>Compensation</u>		<u>%Change</u>
			<u>Current</u>	<u>Proposed</u>	
Chad M. Brackin	Chief Auditor	11/1/2024	\$213,314	\$300,000	40.63%



Board of Supervisors

Resolution by the Board of Supervisors of Louisiana State University and Agricultural and Mechanical College to Address the Decision in *Students for Fair Admissions v. President and Fellows of Harvard College, et al.*

Date: October 10, 2024

1. Bylaw Citation

Pursuant to Article VII, Section 1(A):

Any matter having a significant or long-term impact, directly or indirectly, on the finances or the academic, educational, research, and service missions of the University or any of its campuses.

2. Summary of Matter

On June 29, 2023, the United States Supreme Court issued its ruling in *Students for Fair Admissions v. President and Fellows of Harvard College, et al.*, holding that race-based affirmative action programs in college admissions violate the Equal Protection Clause of the Fourteenth Amendment of the U.S. Constitution. In response to this decision, LSU began a process of evaluating admissions and other programs at its campuses to determine if any changes would be necessary in order to comply with the rationale of the court's decision. This resolution is a charge to the LSU system to identify such programs, make modifications as necessary, and to report any adjustments made as a result of the Board directive.

3. Review of Business Plan

N/A

4. Fiscal Impact

N/A

5. Description of Competitive Process

N/A

6. Review of Legal Documents

N/A

7. Parties of Interest

All students, faculty and staff of the Louisiana State University system.

8. Related Transactions

N/A

9. Conflicts of Interest

N/A

10. Attachments

Resolution of the Board of Supervisors of Louisiana State University and Agricultural and Mechanical College addressing the decision in *Students for Fair Admissions v. President and Fellows of Harvard College, et al.*

RESOLUTION

NOW, THEREFORE, BE IT RESOLVED that the attached resolution shall be approved on this date, October 10, 2024.

Resolution of the Board of Supervisors of Louisiana State University and Agricultural and Mechanical College

Whereas in *Students for Fair Admissions v. President and Fellows of Harvard College et al*, (“*SFA v. Harvard*”) the United States Supreme Court held that the admissions programs in which preferential treatment was provided to certain individuals based upon race could not be reconciled with the guarantees of the equal protection clause of the United States of America;

Whereas prior to this decision, many universities maintained admissions standards and other programs that targeted and provided preferential treatment to individuals based upon race, sex, color, ethnicity, or national origin;

Whereas, over time, many of these programs evolved and proliferated under the title of “diversity, equity and inclusion;”

Whereas following the *SFA v. Harvard* decision, universities across the country have had to evaluate admissions processes as well as other types of programs classifying individuals based upon specific characteristics;

Whereas Louisiana State University and Agricultural and Mechanical College (“LSU”) is a system of federally funded educational institutions that are required to comply with both federal and state law;

Whereas, in accordance with the *SFA v. Harvard* decision, LSU will review all programs or bureaucracies in which persons are classified by race, sex, color, ethnicity, political views, or national origin for the purpose of providing some type of preferential treatment or benefit;

Whereas, based upon the foregoing supreme court opinion, the Louisiana legislature adopted Act 641 of the 2024 regular legislative session mandating that all public postsecondary education institutions report the expenditure of public funds on programs related to diversity, equity, inclusion and belonging;

Whereas, LSU also supports open dialogue, civil discourse, and engagement on issues that allow our students to learn from each other and form their own opinions;

Whereas, in order to support this goal, LSU aligns itself with the University of Chicago’s longstanding and documented approach to institutional neutrality—so that students can speak and listen freely, without influence from the administration’s personal or institutional viewpoints;

Whereas in order to foster free speech and open dialogue, the university should also be a place free of political coercion whether individual or institutional;

BE IT HEREBY RESOLVED that the LSU administration undertake a comprehensive review of all programs and bureaucracies including those titled “diversity, equity and inclusion” in which classifications are maintained on the basis race, sex, color, ethnicity, political views or national origin;

BE IT FURTHER RESOLVED that any such programs which utilize race, sex, color, ethnicity, political views or national origin for the purposes of conferring any preferential treatment in violation of the rule of law outlined by the supreme court in *SFA v. Harvard* will be eliminated.

BE IT FURTHER RESOLVED that, unless required by federal or state law, no hiring policies or practices shall compel, require, induce, or solicit any person to provide a diversity, equity, or inclusion statement or give preferential consideration to any person based on the provision of a diversity, equity, or inclusion statement.

BE IT FURTHER RESOLVED that nothing in this resolution shall be interpreted to limit academic freedom—including research, scholarship, grant funding, or fulfilling accreditation requirements.

BE IT FURTHER RESOLVED that nothing in this resolution shall prevent the organization or assembly of any student-oriented groups, programs, or organizations as protected by La. R.S. 17:3399.33 or the First Amendment of the United States constitution.

BE IT FURTHER RESOLVED that the LSU administration provide a full report, which shall include a detailed listing of all programs or bureaucracies that have been eliminated or will be eliminated within 90 days from the adoption of this resolution, to the LSU Board of Supervisors.



Board of Supervisors

REPORTS TO THE BOARD

**Report to LSU Board of Supervisors:
All Campuses Last 3 Years**

Transfers of Title to Immovable Property

Updated September 16, 2024

2024-2025

Campus	Transfer Description	Value	State ID	Site Code	Approved by	Transfer Date

2023-2024

Campus	Transfer Description	Value	State ID	Site Code	Approved by	Transfer Date
LSU	Act of Donation-PMAC Media Seating Relocation	\$ 74,255			Pres. Tate	06/27/23
	Act of Donation-LSU Golf Practice Facility Interior Renovations	\$ 170,322			Pres. Tate	06/27/23
	Act of Donation-LSU PMAC Retractable Bleacher Repairs	\$ 60,000			Pres. Tate	09/07/23
	Act of Donation- Tiger Stadium New Loge Seating Areas	\$ 266,214			Pres. Tate	09/11/23
	Act of Donation-Charles McClendon Outdoor Practice Facility Synthetic Turf Replacement and Related Improvements	\$ 1,469,184			Pres. Tate	06/27/23
	Sale of Earl K. Long Property to East Baton Rouge Parish Housing Authority	\$ 1,185,000			Pres. Tate	11/03/23
HSCNO	Purchase of 531 & 535 Derbigny by HSCNO	\$ 258,198			Pres. Tate	12/15/23
		\$ 3,483,172				

2022-2023

Campus	Transfer Description	Value	State ID	Site Code	Approved by	Transfer Date

**Report to LSU Board of Supervisors:
All Campuses Last 3 Years**

Approval of Requests for Timber Sales

Updated September 16,, 2024

2024-2025							
Campus	Location	Parish	Acreage	Payment	Designated Timber to be Removed:	Approved by	Approval Date
AgCenter	Hill Farm Research Station	Claiborne	2 sites: 45 acres & 31 acres	\$157,875.24	Pine sawtimber and pulpwood	Matt Lee, VP of Agriculture & Asst VP Patrick Martin Real Estate	8/6/2024
2023-2024							
Campus	Location	Parish	Acreage	Payment	Designated Timber to be Removed:	Approved by	Approval Date
AgCenter	Bob R. Jones Idlewild Research Station	East Feliciana	2 sites: 52 acres & 40 acres	about \$65,000	Pine saw timber, pine pulpwood, hardwood saw timber and hardwood pulpwood.	Matt Lee, VP of Agriculture & Asst VP Patrick Martin Real Estate	6/15/2023
AgCenter	Bob R. Jones Idlewild Research Station	East Feliciana	90 acres	\$ 55,000	Clear-cut three acres	William F. Tate	11/3/2023
2022-2023							
Campus	Location	Parish	Acreage	Payment	Designated Timber to be Removed:	Approved by	Approval Date

**Report to LSU Board of Supervisors:
All Campuses Last 3 Years**

Capital Improvements Projects above \$175,000

Updated September 16, 2024

2024-2025		AMOUNT APPROVED	FUNDS SOURCE	APPROVED BY	APPROVAL DATE
LSU	Miller Hall Exterior Envelope Repairs	\$208,000	Auxiliary Funds	Exec. VP Lewis	08/14/24
	Student Union Theater Lighting Replacement	\$220,000	Auxiliary Funds	Exec. VP Lewis	07/22/24
	Total LSU	\$428,000			
AgCenter	Hay Barn Replacement-Rice Research Station	\$170,220	Oper Funds: \$94,367.44, FEMA \$75,852.56	Exec. VP Lewis	07/10/24
	Generator-Greenhouse	\$300,000	Self Generated Fund	Exec. VP Lewis	09/03/24
		\$470,220			
TOTAL CAPITAL PROJECTS APPROVALS 2024-2025		\$898,220			
2023-2024		AMOUNT APPROVED	FUNDS SOURCE	APPROVED BY	APPROVAL DATE
LSU	Athletic Administration Bldg 504A IT Room Renovation	\$216,000	Auxiliary Funds	Exec. VP Lewis	02/05/24
	Chemical Engineering Bldg.Shop 164 Renovations	\$994,000	Operational Funds	Exec. VP Lewis	06/14/24
	Digital Media Center 2nd & 3rd floor Renovations	\$193,300	Other Funds	Exec. VP Lewis	06/14/24
	Digital Media Center: Generator, UPS and Cooling Backup for Servers	\$275,000	Operational Funds	Exec. VP Lewis	11/17/23
	Evangeline Circle Horseshoe ADA Sidewalk & Site Improvement	\$180,000	Facility Access Fee	Exec. VP Lewis	07/28/23
	French House Honors College Site Improvements Ph. 2	\$400,000	Foundation & Enhancing the Core Funding	Exec. VP Lewis	06/14/24
	Hatcher Hall Basement Enclosure	\$230,000	Operational Funds	Exec. VP Lewis	03/27/24
	Hatcher Hall: Ramp Enclosure	\$230,000	Operational Funds	Exec. VP Lewis	03/27/24
	Innovation Park Bldg 3000 1st Floor Renovations	\$575,000	Self-Generated Funds	Exec. VP Lewis	04/24/24
	Innovation Park Lot Improvements	\$235,000	Operational Funds	Exec. VP Lewis	05/30/24
	Oyster Hatchery - Hurricane Ida Repairs, Grand Isle, LA	\$250,000	Other Funds	Exec. VP Lewis	01/16/24
	Peabody Renovations Suites 111, 113, 114, 223	\$200,000	Operational Funds	Exec. VP Lewis	11/17/23
	Student Union UPS Lockers Renovation Rm. 101	\$400,000	Auxiliary Funds	Exec. VP Lewis	04/24/24
	Student Union: Chiller Replacement	\$740,000	Auxiliary Funds	Exec. VP Lewis	02/05/24
	SVM Cafeteria Renovations	\$365,500	Operational Funds	Exec. VP Lewis	04/09/24
	SVM: Main Bldg Room 1642 / 1701 Restroom Reconfiguration	\$350,000	Operational Funds	Exec. VP Lewis	11/17/23
	SVM: Suite 1213 Renovations	\$800,000	Operational Funds	Exec. VP Lewis	10/17/23
	Thomas Boyd Hall Suite 146 Renovation	\$335,000	Operational Funds	Exec. VP Lewis	07/11/23

	Tiger Park Stadium Premium Seating Replacement		\$225,000	Auxiliary Funds	Exec. VP Lewis	07/28/23
	Tiger Stadium South Stadium Sanitary Sewer Upgrade		\$200,000	Auxiliary Funds	Exec. VP Lewis	04/09/24
	Tiger Stadium: 3rd Floor Renovations		\$590,000	Auxiliary Funds	Exec. VP Lewis	02/05/24
	U High New Multi-Use Practice Field		\$225,000	Other: Achieve! ESSER III Grant	Exec. VP Lewis	04/09/24
	U High: Elementary AHU Replacement		\$200,000	Auxiliary Funds	Exec. VP Lewis	03/27/24
	UAB: Room 118 Break Room and Restroom Renovations		\$396,100	Operational Funds	Exec. VP Lewis	01/16/24
	UREC: Chilled Water Heat Exchanger for Lazy River		\$195,000	Auxiliary Funds	Exec. VP Lewis	01/16/24
		Total LSU	\$8,999,900			
LSUA	Baseball - Softball Lighting		\$173,700	Auxiliary Revenue	Exec. VP Lewis	05/13/24
	Center of Circle Driveway-Budget Increase	Additional \$	\$239,750	Auxiliary Funds	Exec. VP Lewis	04/04/24
	Circle Driveway Arrival Plaza		\$201,250	Auxiliary Funds	Exec. VP Lewis	03/05/24
	Lot 7 Resurfacing		\$520,000	Auxiliary Funds	Exec. VP Lewis	05/29/24
		Total LSUS	\$1,134,700			
LSUS	Administration Building Cubicle Renovations		\$452,300	Operational Funds	Exec. VP Lewis	01/09/24
	Baseball Outfield Regrading		\$180,888	Auxiliary Funds	Exec. VP Lewis	2/2/2024
	Business Education West Side Roof Replacement		\$194,120	Operational Funds	Exec. VP Lewis	09/10/23
		Total LSUS	\$194,120			
AgCenter	Generator Greenhouses		\$179,925	Self-Gen- Rice Research Foundation Board	Exec. VP Lewis	07/11/23
	Milling and Quantative Genetics Labs Renovation		\$250,000	Self-Gen- Rice Research Board	Exec. VP Lewis	07/12/23
	New Greenhouse		\$550,000	Self-Generated-Rice Foundation	Exec. VP Lewis	08/29/23
	Quantitative Genetics Lab and Milling Lab Renovations		\$450,000	Other:	Exec. VP Lewis	03/05/24
	Rice Research Station Shop Building		\$700,000	Self-Gen- Donations	Exec. VP Lewis	03/31/23
	Shop Building		\$700,000	Self-Generated-Donated	Exec. VP Lewis	09/05/23
	Wastewater Treatment Plant-Grant Walker		\$400,000	Supplement Funds for Equip. & Needed Renovations	Exec. VP Lewis	02/20/24
	Windrush Gardens Improvements Stormwater2		\$450,000	Operational Funds	Exec. VP Lewis	02/05/24
		Total HSCNO	\$3,679,925			
HSCNO	2nd-4th Floor Restroom Renovation		\$375,000	Operational Funds	Exec. VP Lewis	01/19/24
		Total LSUS	\$375,000			
HSCS	Executive Suite Renovations		\$240,000	Operational Funds	Exec. VP Lewis	02/20/24

		Total LSUS	\$240,000			
TOTAL CAPITAL PROJECTS APPROVALS 2022-2023			\$14,623,645			

2022-2023			AMOUNT APPROVED	FUNDS SOURCE	APPROVED BY	APPROVAL DATE
LSU	Alex Box: Repairs & Waterproofing		\$220,000	Auxilliary Funds	Kimberly Lewis	01/30/23
	Athletic Admin Bldg: 2nd Floor Renovations		\$247,000	Auxilliary Funds	Kimberly Lewis	09/12/22
	Chemical Engineering Bldg: CO2 / Water Electrolysis Laboratory Renovation		\$862,400	Other: EDA Grant	Kimberly Lewis	01/30/23
	Chemical Engineering Building- Shop 164 Renovations		\$275,000	Engineering Excellence Fund	Exec. VP Lewis	08/02/22
	Chemical Engineering Building- Shop 164 Renovations Revised		\$785,000	Operational Funds	Exec. VP Lewis	10/10/22
	Choppin Hall Room 607 & 703 Lab Renovations		\$359,892	Operational Funds	Exec. VP Lewis	11/04/22
	Digital Media Center: Cyber Security Renovations		\$275,000	Other: LED Grant Digital Media Cetner & Virtual Projection Project	Exec. VP Lewis	11/14/22
	Digital Media Center: Cyber Security Renovations revised		\$407,000	LED-Digital Media Ctr Cyber/Virtual Production Project	Exec. VP Lewis	05/09/23
	Landscape Svcs. North Lot Parking Improvements		\$400,000	Auxilliary Funds	Exec. VP Lewis	04/26/23
	Mobility Implementation Phase 1 Union Hub		\$475,000	Auxilliary Funds	Exec. VP Lewis	12/19/22
	Nicholson Hall 4th Floor Renovations		\$207,000	Operational Funds	Exec. VP Lewis	03/13/23
	Pleasant Hall: 2nd Floor Renovations for PTS		\$576,000	Auxilliary Funds	Exec. VP Lewis	12/13/22
	SVM: Main Bldg. 2nd & 3rd Floor Back-up Unit Installation		\$330,000	Operational Funds	Exec. VP Lewis	11/03/22
	SVM: Main Bldg. AHU 3 Replacement		\$450,000	Operational Funds	Exec. VP Lewis	11/03/22
	Thomas Boyd Hall Suite 146 Renovations		\$270,000	Auxiliary Funds	Exec. VP Lewis	05/09/23
	Tiger Stadium North Stadium Sanitary Sewer Replacement		\$250,000	Auxilliary Funds	Exec. VP Lewis	04/10/23
	U-High Lab School: Boiler Replacement		\$500,000	Other: ESSER III Grant Funding	Exec. VP Lewis	12/13/22
	U-High Lab School: Football Field Turf Replacement		\$800,000	Other: ESSER III Grant	Exec. VP Lewis	10/27/22
	U-High Lab School: Replace Flooring Multiple Rooms		\$176,000	Other: ESSER Grant	Exec. VP Lewis	03/20/23
	UREC New Challenge Course 2022		\$250,000	Auxiliary Funds	Exec. VP Lewis	08/02/22
	UREC New Challenge Course 2022 Budget Change revised from \$250,000		\$499,500	Auxiliary Funds	Exec. VP Lewis	02/23/23
		Total LSU	\$8,614,792			
LSUA	Lot 7 Resurfacing		\$487,500	S-G: Restricted Fees: Parking/Lights/Sidewalk accoung.	Exec. VP Lewis	10/25/22
		Total LSUA	\$487,500			
LSUE	HVAC Air Purification Systems for Major Buildings		\$215,000	HEERF III Funding	Exec. VP Lewis	12/01/22
		Total LSUA	\$215,000			

LSUS	Baseball Artificial Turf		\$390,700	Auxilliary Funds	Exec. VP Lewis	09/28/22
	Pool Closure- budget increase from \$318,000		\$499,900	Operational Funds	Exec. VP Lewis	11/14/22
	Science Annex Building- budget increase from \$385000		\$970,000	Operational Funds	Exec. VP Lewis	01/23/23
	University Center Heating Water Boilers		\$300,000	Operational Funds	Exec. VP Lewis	06/13/22
		Total LSUS	\$2,160,600			
HSCNO	Dental Clinic HSRA Grant Space		\$879,200	Operational Funds	Exec. VP Lewis	01/23/22
	Lions Eye Center 2nd-4th Floor Restroom Renovations		\$423,000	Operational Funds	Exec. VP Lewis	02/15/23
		Total HSCNO	\$1,302,200			
TOTAL CAPITAL PROJECTS APPROVALS 2022-2023			\$11,477,892			

2021-2022		AMOUNT APPROVED	FUNDS SOURCE	APPROVED BY	APPROVAL DATE
LSU	Alex Box: Exterior Councourse Stair Repairs	\$216,000	MRA Funds	Exec. VP Lewis	05/25/22
	Chemistry & Materials Building: Room 144C Renovations	\$286,000	Restricted, Federal Grants, Contracts, Research	Interim Exec. VP Torres	01/19/22
	Child Care Center Playground Renovations	\$250,000	Other: Grant for playgrounds	Exec. VP Lewis	06/15/22
	ECA Bldg 3 & 12 Roof Repairs	\$550,000	Auxiliary Funds	Exec. VP Lewis	02/11/22
	French House Honors College Site & Landscaping Improvements Phase 1a	\$460,000	Ancillary Self Generated Revenue	Interim Exec. VP Torres	09/07/21
	Himes, Lockett and Prescott-1st Floor Restrooms Modifications for ADA Compliance	\$360,000	Facility Access Fee-Auxiliary Self Gen Funds	Interim Exec. VP Torres	10/06/21
	Johnston Hall 2nd-3rd Floor SW Wing Renovation	\$198,000	Other: Indirect Cost Allocation	Exec. VP Lewis	05/10/22
	Life Sciences Building-Room 613 Lab Renovations	\$260,000	Operational Funds	Interim Exec. VP Torres	12/01/21
	Life Sciences Building-Rooms 512 & 515 Lab Renovations	\$225,000	Operational Funds	Interim Exec. VP Torres	01/19/22
	PERTT Electrical Improvements, Phase 2	\$280,000	Auxiliary Funds	Exec. VP Lewis	06/14/22
	Residential College: Boiler Replacement Design	\$250,000	Auxiliary Funds	Exec. VP Lewis	05/10/22
	Student Union 4th Floor Renovation for Student Affairs	\$250,000	Auxiliary Funds	Exec. VP Lewis	05/10/22
	Student Union Ballroom Renovations	\$880,000	Auxiliary Funds	Exec. VP Lewis	03/15/22
	SVM: Pharmacy Relocation to Main Lobby	\$350,000	Self-Generated	Exec. VP Lewis	02/11/22
	SVM: Rm 2536, 2538, 2538A, 2540 Lab Renovations	\$190,000	Operational Funds	Exec. VP Lewis	04/13/22
	Tiger Stadium Level 3B Structural Repairs	\$455,000	Auxiliary Funds	Interim Exec. VP Torres	01/19/22
	WCA Bldg 5: Roof Repairs	\$245,000	Auxiliary Funds	Exec. VP Lewis	02/11/22
	Total LSU	\$5,705,000			
LSUA	HVAC UVC Additions	\$226,500	CARES Act Funding	Interim Exec. VP Torres	01/22/22
	Room UVC Additions	\$200,000	CARES Act Funding	Interim Exec. VP Torres	01/23/22
	Room UVC Additions Budget Increase	\$90,000	CARES Act Funding	Exec. VP Lewis	04/21/22
	Total LSUA	\$516,500			
LSUE	Health Technology Building Gas System Upgrade/Lab Reno	\$187,000	CARES Act Funding	Exec. VP Lewis	\$44,694
	Plumbing Fixture Upgrade	\$268,920	CARES Act Funding	Interim Exec. VP Torres	11/01/21
	Total LSUE	\$455,920			

LSUS	Bronson Hall Elevator Equipment & cab Upgrades		\$290,000	Operational Funds	Interim Exec. VP Torres	07/26/21
	HPE Building Equipment Pavilion Climate Chamber budget <i>additional funds added to original \$203,000</i>		\$92,000	Operational Funds	Interim Exec. VP Torres	07/05/21
	New Science Building Annex		\$385,000	Operational Funds	Exec. VP Lewis	05/13/22
	Pool Closure		\$318,000	Operational Funds	Exec. VP Lewis	02/22/22
		Total LSUS	\$1,085,000			
HSCNO	Allied Health/School of Nursing (AHSON) 3rd Fl. Coffee Kiosk		\$175,000	Operational Funds	Exec. VP Lewis	05/24/22
	Lions Eye Center 1st Floor Restrooms		\$450,000	Operational Funds	Exec. VP Lewis	05/24/22
	Medical Education Building (MEB) 4th Fl. Restrooms		\$278,000	Operational Funds	Exec. VP Lewis	05/24/22
		Total HSCNO	\$903,000			
TOTAL CAPITAL PROJECTS APPROVALS 2021-2022			\$8,665,420			

**Report to LSU Board of Supervisors:
All Campuses Last 3 Years**

Design Contracts

Updated September 17, 2024

		reimbursables					Approval
2024-2025		Designer Fee	or other fees	Revised Total	Designer	Approved by	Date
LSU A&M	Miller Hall Exterior Envelope Repair	\$35,000	\$10,000	\$45,000	Neal Johnson LLC	AVP Mahaffey	07/24/24
	Campus Wide SS4A Grant Application	\$10,000		\$10,000	Kimley-Horn and Associates Inc.	AVP Mahaffey	07/09/24
	Total LSU A&M	\$45,000	\$10,000	\$55,000			
LSUA	Baseball Softball Fieldhouse Construction	73,150.00	\$0	\$73,150	Ashe Broussard Weinzettle	AVP Mahaffey	08/20/24
	Hwy 71 Roadway Lighting	38,589.00	\$0	\$38,589	ADG Engineering	AVP Mahaffey	08/20/24
	TOTAL LSUA	111,739.00	\$0	\$111,739			
LSUS	Convert Classroom to Offices 3rd Floor B.E. Building	17,679.00	\$0	\$17,679	Sutton Beebe Babin	AVP Mahaffey	08/20/24
	TOTAL LSUS	17,679.00		\$17,679			
	Subtotal	\$174,418	\$10,000	\$184,418			
2023-2024		Designer Fee	reimbursables or other fees	Revised Total	Designer	Approved by	Approval Date
LSU A&M	Athletic Admin Bldg: 504A IT Room Renovations	\$20,270	\$10,000	\$30,270	Eyre Engineers LLC	AVP Mahaffey	02/07/24
	Engineering Construction Management Building: Program	\$22,500	\$1,200	\$23,700	Coleman Partners Architects	AVP Mahaffey	07/05/23
	French House Honors College Site Improvements PH 2	\$36,634	\$11,000	\$47,634	Carbo Landscape	AVP Mahaffey	05/22/24
	Innovation Park Bldg 3000 1st Floor Renovations	\$23,055	\$1,000	\$24,055	Eyre Engineers LLC	AVP Mahaffey	06/07/24
	Innovation Park Bldg 3000 1st Floor Renovations-Testing, Monitoring, Sampling, Reporting and Environmental Design	\$4,330	\$8,520	\$12,850	Rayner Consulting	AVP Mahaffey	04/24/24
	Innovation Park: Master Planning and Drainage Development	\$107,500	\$1,000	\$108,500	CSRS, Inc.	AVP Mahaffey	09/05/23
	Oyster Hatchery Hurricane Ida Repairs, Grand Isle, LA	\$43,643		\$43,643	Mougeot Architecture	AVP Mahaffey	06/07/24
	PERTT Equipment Yard: CO2 Wellbore and Flow Loop Installation	\$42,662	\$120	\$42,782	Forte and Tablada	AVP Mahaffey	09/01/23
	Student Union Ups Locker Renovation Rm. 101	\$3,825,213	\$10,500	\$3,835,713	Street Collaborative, LLC	AVP Mahaffey	04/26/24
	SVM Cafeteria Renovation	\$35,361	\$1,050	\$36,411	Street Collaborative, LLC	AVP Mahaffey	03/27/24
	SVM: Clinical Skills Teaching Center	\$30,000		\$30,000	Tipton Associates APAC	AVP Mahaffey	12/08/23
	SVM: Equine Institute Concept Presentation	\$22,000		\$22,000	Tipton Associates APAC	AVP Mahaffey	09/05/23
	SVM: Grant Application For DLAM Vivarium Lab Expansion - 2024	\$32,500		\$32,500	Clark & Enerson Inc.	Danny Mahaffey	12/08/23
	SVM: Main Bldg Room 1642 / 1701 Restroom Reconfiguration	\$33,941	\$6,480	\$40,421	Hoffpauir Studio LLC	Danny Mahaffey	12/08/23
	SVM: Wildlife Hospital	\$24,000		\$24,000	Tipton Associates APAC	Danny Mahaffey	12/08/23
	Tiger Stadium: 3rd Floor Renovations	\$13,185	\$1,000	\$14,185	Eyre Engineers LLC	Danny Mahaffey	01/29/24
	U High: Athletic Facilities Addition	\$16,000		\$16,000	Tipton Associates APAC	Danny Mahaffey	01/04/24
	UAB: Room 118 Break Room and Restroom Renovations	\$28,421	\$2,920	\$31,341	Williams Architecture LLC	Danny Mahaffey	12/07/23
	UREC: Chilled Water Heat Exchanger for Lazy River	\$19,974	\$1,000	\$20,974	Eyre Engineers LLC	Danny Mahaffey	12/08/23
	Subtotal	\$4,381,188	\$55,790	\$4,436,978			
LSU A&M	Elevator Refurbishment, Life Science Building	58,221.00		\$58,221	GD Architecture, LLC	Architect Selection Bd.	03/20/24
	Exterior Repairs, Julian White Hall	420,202.00		\$420,202	NANO	Architect Selection Bd.	12/05/23
	Lab Ventilation and Fume Hood Replacement, ECE Building	121,440.00		\$121,440	Salas O'Brien	Architect Selection Bd.	07/12/23
	LSU Library Learning Commons	1,031,245.00		\$1,031,245	Coleman Partners & EskewDumezRipple	Architect Selection Bd.	11/15/23
	Military and Security Sciences	766,499.00		\$766,499	Coleman Partners Architects, LLC	Architect Selection Bd.	09/20/23
	Power House Water Treatment & Electrical Switchgear Repairs	\$178,812		\$178,812	Marrero Couvillon & Associates LLC	Engineer Selection Board	02/07/24
	Roof Replacement Ag Metal Building	39,585.00		\$39,585	Plus One, LLC	Architect Selection Bd.	09/20/23
	Strategic Capital Plan-DM for Infrastructure, Renovations, and Streets	501,904.00		\$501,904	Forte & Tablada	Architect Selection Bd.	01/10/24
	Vet Med Facilities Repairs, Chiller Replacement	129,114.00		\$129,114	Assaf, Simoneaux Tauzin	Architect Selection Bd.	01/10/24
	Vet Med Facilities Repairs/Addition, BSL3 Lab Renovations -3rd Fl Main Bldg and LADDL	254,374.00		\$254,374	Hoffpauir Studio	Architect Selection Bd.	12/05/23
	Subtotal	\$3,501,396	\$0	\$3,501,396			
	Total LSU A&M	\$7,882,584	\$55,790	\$7,938,374			
HSCNO	Cup Chilled Water Heat Exchanger Replacement	\$46,711		\$46,711	Huseman and Associates	AVP Mahaffey	11/07/23
	Lions Eye Center 2nd, 3rd, 4th Fl. Women's Restrooms Renovations	\$10,000		\$10,000	Mathes Brierre - a Joint Project	AVP Mahaffey	11/03/23
	Lions Eye Center 2nd, 3rd, 4th Fl. Women's Restrooms Renovations	\$14,250		\$14,250	GVA Engineering, LLC - a Joint Project	AVP Mahaffey	11/03/23
	MEB 1sr Floor Environmental Health & Safety Office Relocation	\$23,660		\$23,660	GVA Engineering, LLC	AVP Mahaffey	08/07/23
	Subtotal	\$94,621	\$0	\$94,621			

**Report to LSU Board of Supervisors:
All Campuses Last 3 Years**

Design Contracts

Updated September 17, 2024

HSCNO	Replacement of Air Handling Units, M.L. Trail Clinical Science Research Building	\$61,278	\$61,278	\$122,556	GVA Engineering, LLC	Architecture Selection Bd	07/12/23
	Facility Renovations Dental School	\$3,115,999		\$3,115,999	Mathes Brierre Architects + Blitch Knevel Architects	Architecture Selection Bd	09/20/23
	CALS Bridge Connection-CALS Infrastructure & Equipment	\$199,048		\$199,048	Sizeler Thompson Brown Architects	Architecture Selection Bd	12/05/23
	Data Center	143,108.00		\$143,108	SCNZ Architects, LLC	Architecture Selection Bd	09/20/23
		\$3,519,433	\$61,278	\$3,580,711			
	Total HSCNO	\$3,614,054	\$61,278	\$3,675,332			
LSUA	Downtown Health Education Services Center	\$1,998,970		\$1,998,970	Ashe Broussard + Tipton	Architecture Selection Bd	11/15/23
		\$1,998,970		\$1,998,970			
LSUE	STEAM Innovation Center Phase I	\$566,860	\$0	\$566,860	Washer Hill Lipscomp	Architecture Selection Bd	01/25/24
	Total PBRC	\$566,860	\$0	\$566,860			
LSUS	Pilots Point Student Apartments-Replace Water Heaters	\$26,630		\$26,630	John J. Guth Associates	AVP Mahaffey	02/26/24
	Administration Building Renovation to Accounting Offices	\$52,864		\$52,864	Sutton Beebe Babin Architects, LLC	AVP Mahaffey	01/03/24
	Business Education West Side Roof Replacement	\$22,606		\$22,606	McNew Architecture	AVP Mahaffey	09/14/23
	Total LSUS	\$102,100	\$0	\$102,100			
PBRC	Basic Science Building L Reroofing	\$57,567	\$0	\$57,567	Cockfield Jackson	Architecture Selection Bd	12/05/24
	Total PBRC	\$57,567	\$0	\$57,567			
	Total All 2023-2024	\$14,222,135	\$117,068	\$14,339,203			

**Report to LSU Board of Supervisors:
All Campuses Last 3 Years**

Design Contracts

Updated September 17, 2024

		Reimbursables					Approval
2022-2023		Designer Fee	or other fees	Revised Total	Designer	Approved by	Date
LSU A&M	Alex Box: Exterior Concourse Stair Repairs	\$15,500	\$500	\$16,000	Grace Hebert Curtis Architects LLC	AVP Mahaffey	10/03/22
	Bernie Moore: Structural Preventative Maintenance	\$13,711	\$1,000	\$14,711	Wardlaw Lasseigne & LeBouef, LLC	AVP Mahaffey	11/03/22
	Chemistry & Materials Bldg: Room 168 Renovations	\$15,189	\$1,000	\$16,189	Bradley Blewster & Associates	AVP Mahaffey	10/07/22
	Choppin Hall: Room 607 and 703 Lab Renovations	\$40,845	\$13,450	\$54,295	Mougeot Architecture	AVP Mahaffey	10/31/22
	College of Science: Masterplan Study Update 2023	\$31,500	\$0	\$31,500	Holly & Smith Architects	AVP Mahaffey	01/23/23
	Digital Media Center: Cyber Security Renovations	\$25,800	\$0	\$25,800	Coleman Partners Architects	AVP Mahaffey	11/10/22
	Howe Russell Kniffen: Building System and Infrastructure Study	\$16,500	\$0	\$16,500	Holly & Smith Architects	AVP Mahaffey	11/14/22
	Mobility Implementation Phase 1 - Union Hub	\$59,200.00	\$0	\$59,200	CARBO Landscape Architecture	AVP Mahaffey	12/12/22
	ORED: Master Planning Study 2023	\$62,500.00	\$0	\$62,500	Facility Programming LTD	AVP Mahaffey	03/07/23
	SVM: Grant Application For DLAM Vivarium Lab Expansion - 2023	\$35,000.00	\$0	\$35,000	Washer Hill Lipscomb Cabaniss Arch. LA LLC	AVP Mahaffey	02/20/23
	SVM: Master Plan Update 2022	\$227,200.00	\$0	\$227,200	Dober Lidsky Mathey	AVP Mahaffey	10/03/22
	Subtotal	\$542,945	\$15,950	\$558,895			
LSU A&M	Knapp Hall: Clay Tile Roof Replacement (DM)	\$61,912.00	\$0	\$61,912	Holden Architects	Architect Selection Bd.	01/18/23
	Nicholson Hall: Roof Replacement (DM)	\$47,664.00	\$0	\$47,664	Fusion Architects	Architect Selection Bd.	01/18/23
	Elevator Repairs and Code Upgrades, Hebert Law Center East Annex	\$41,228.00	\$0	\$41,228	King Consulting Engineering, LLC + Albert Architecture & Urban Design APLLC	Architect Selection Bd.	01/18/23
	Prescott Hall: HVAC Repairs and Upgrades (DM)	\$56,039.00	\$0	\$56,039	Henry C Eyre Consulting Engineers	Engineer Selection Bd.	01/11/23
	Streetscape Repairs, Powerfouse Lane to North Stadium	\$150,069.00	\$0	\$150,069	Duplantis Design Group, PC	Engineer Selection Bd.	01/11/23
	SVM Auditorium, Restroom and Lab Renovations	\$287,538	\$0	\$287,538	Bradley-Blewster & Associates	Architect Selection Bd.	07/20/22
	SVM Junior Surgery Renovations	\$328,413	\$0	\$328,413	Hoffpauir Studio LLC	Architect Selection Bd.	07/20/22
	U High: High School Clay Tile Roof Replacement (DM)	\$59,728.00	\$0	\$59,728	Post Architects LLC	Architect Selection Bd.	01/18/23
	Subtotal	\$1,032,591	\$0	\$1,032,591			
	Total LSU A&M	\$1,575,536	\$15,950	\$1,591,486			
AgCenter	Food Innovation Center	\$187,785	\$0	\$187,785	BBI Architects	Architect Selection Bd.	01/18/23
	Total AgCenter	\$187,785	\$0	\$187,785			
HSCNO	Lions Eye Center West Restrooms Renovations- 2nd, 3rd, 4th Floors	\$24,250	\$0	\$24,250	Mathes Brierre Architects	AVP Mahaffey	02/15/23
	Total HSCNO	\$24,250	\$0	\$24,250			
LSUE	New Baseball Stadium Athletic Complex Facility	\$699,071	\$0	\$699,071	RHH Architects, APAC	Architecture Selection Bd	09/21/22
	Total LSUE	\$699,071	\$0	\$699,071			
LSUS	Baseball Infield Turf Conversion	\$36,693	\$0	\$36,693	Simpson Sports Engineering, LLC	AVP Mahaffey	08/30/22
	Baseball Outfield Re-Grading	\$13,800	\$0	\$13,800	Nixon Engineering Solutions	AVP Mahaffey	03/08/23
	Student Success Center Advising Area Renovation	\$19,500	\$0	\$19,500	Prevot Design	AVP Mahaffey	05/02/23
	Business Engagement Center	\$45,156	\$0	\$45,156	Sutton, Beebe Babin Architects, LLC	AVP Mahaffey	12/13/22
Subtotal LSUS	\$115,149	\$0	\$115,149				
LSUS	Science Building Research Annex	\$35,579	\$0	\$35,579	Sutton Beebe Babin Architects, LLC	Architecture Selection Bd	11/16/22
	Boiler Installation Renovation Business Administration & Education Building and Bronson Hall	\$56,256	\$0	\$56,256	Aillet, Fenner, Jolly & McClelland, Inc.	Architecture Selection Bd	04/14/23
Subtotal LSUS	\$35,579	\$0	\$35,579				
Total LSUS	\$150,728	\$0	\$150,728				
Total All 2022-2023	\$2,788,097	\$15,950	\$2,804,047				

**Report to LSU Board of Supervisors:
All Campuses Last 3 Years**

Foundation Construction Related Agreements*

**Donation to follow upon completion and acceptance of all work or as stated in the agreement*

Updated September 16, 2024

2024-2025					Estimated	Approval	
Document Type	Campus	Lessor	Lessee	Project	Cost	Date	Approved by
Lease Agreement	LSU	LSU BoS	Tiger Athletic Foundation	Burpen Construction & 100 New Field Level Seats at Alex Box	\$3,500,000	6/20/2024	Pres. William F. Tate IV
License for Use Agreement	LSU	LSU BoS	Tiger Athletic Foundation	Athletic Administration 5th Floor 11 Room 501A Renovation	\$200,000	6/11/2024	Exec. VP Lewis
License for Use Agreement	LSU	LSU BoS	Tiger Athletic Foundation	PMAC Basketball Fueling Station	\$150,000	6/11/2024	Exec. VP Lewis
License for Use Agreement	LSU	LSU BoS	Tiger Athletic Foundation	Tennis Seating and Shade Improvements	\$350,000	6/11/2024	Exec. VP Lewis
License for Use Agreement	LSU	LSU BoS	Tiger Athletic Foundation	Tiger Habitat Plaza Upgrades	\$50,000	6/11/2024	Exec. VP Lewis
License for Use Agreement	LSU	LSU BoS	Real Estate & Facilities Foundation	Use Agreement for Use of Facilities & Premises for Site Evaluations	n/a	6/11/2024	Exec. VP Lewis
License for Use Agreement	LSU	LSU BoS	Tiger Athletic Foundation	Volleyball Phase 1 Locker Room Improvements	\$480,000	6/11/2024	Exec. VP Lewis
2023-2024					Estimated	Approval	
Document Type	Campus	Lessor	Lessee	Project	Cost	Date	Approved by
Lease Agreement	LSU	LSU BoS	Tiger Athletic Foundation	PMAC Women's Basketball Locker Room Upgrades	\$1,500,000	7/21/2023	Pres. William F. Tate IV
2022-2023					Estimated	Approval	
Document Type	Campus	Lessor	Lessee	Project	Cost	Date	Approved by
License for Use Agreement	LSU	LSU BoS	Tiger Athletic Foundation	Football Operations Head Coach Office 2022	\$325,000	8/30/2022	Exec. VP Lewis
Lease of Space Agreement	LSU	LSU BoS	Tiger Athletic Foundation	Football Operations Improvements for Elite Level Rehab	\$20,000,000	1/25/2023	Pres. Tate
License for Use Agreement	LSU	LSU BoS	Burden Museum and Gardens, LLC (REFF)	New Storage Building	\$699,500	1/27/2023	Exec. VP Lewis
License for Use Agreement	LSU	LSU BoS	Geology Field Camp Roof Replacement, LLC (REFF)	Geology Field Camp Roof Repairs	\$147,000	9/28/2022	Exec. VP Lewis
License for Use Agreement	LSU	LSU BoS	Geology Field Camp Roadway Repairs, LLC (REFF)	Geology Field Camp Roadway Repairs	\$30,000	9/28/2022	Exec. VP Lewis
License for Use Agreement	LSU	LSU BoS	Tiger Athletic Foundation	PMAC Statue Plaza Site Work & Installation	\$400,000	7/5/2022	Exec. VP Lewis
License for Use Agreement	LSU	LSU BoS	Tiger Athletic Foundation	Soccer Game Field Improvements-2023	\$800,000	3/6/2023	Exec. VP Lewis
License for Use Agreement	LSU	LSU BoS	Tiger Athletic Foundation	Soccer Stadium Barrier Wall 2022	\$95,000	8/30/2022	Exec. VP Lewis

**Report to LSU Board of Supervisors:
All Campuses Last 3 Years**

Grants of Mineral Rights

Updated September 16, 2024

2024-2025															
Campus that Benefits	Sale Date	State Lease #	Leased to:	Operated by	Release Date	Parish	Section, Township, Range	Acres Bid	Lease Term	Cash Bonus	Price Per Acre	Rentals/ Year	Royalty	Accepted Acres	Accepted Bonus
n/a															
2023-2024															
Campus that Benefits	Sale Date	State Lease #	Leased to:	Operated by	Release Date	Parish	Section, Township, Range	Acres Bid	Lease Term	Cash Bonus	Price Per Acre	Rentals/ Year	Royalty	Accepted Acres	Accepted Bonus
n/a															
2022-2023															
Campus that Benefits	Sale Date	State Lease #	Leased to:	Operated by	Release Date	Parish	Section, Township, Range	Acres Bid	Lease Term	Cash Bonus	Price Per Acre	Rentals/ Year	Royalty	Accepted Acres	Accepted Bonus
LSUS	03/09/22	22062	Cypress Energy Co.			Caddo	S37-T17N-13W	50.850	3 yrs.	\$101,700.00	\$2,000.00	\$50,850.00	22.5%	50.850	\$101,700.00

**Report to LSU Board of Supervisors:
All Campuses**

Other Agreements and Approval Requests

Updated September 16, 2024

2024-2025

Document Type	Campus	Lessor or Seller or Assignor	Lessee or Buyer or Assignee	Related Agreements or Purpose
Extension 4 of Tsunami Modified Facilities Use Agreement at Shaw Center	LSU	LSU	Chartwells	Restaurant
Termination Notice-State Lease-LSU Health Shreveport & Haynes Peavy, LLC for space for use by Partners in Wellness Clinic	HSCS	Haynes Peavy, LLC	LSU Board of Supervisors for LSU HSCS	Termination Notice
Request for Approval of Line of Credit Forms	Various	State of Louisiana	LSU Campuses	Receipt of Capital Outlay Lines of Credit
Revision 1 to Funding Summary of LSU System DM Projects	Various	State of Louisiana	LSU Campuses	Receipt of State Deferred Maintenance funding
Assignment and Assumption of Lease	LSU	Sigma Chapter of Delta Zeta House Corporation	Delta Zeta National Housing Corporation	
Option Term #1 to State Lease #19-10302	AgCenter	Town of Vidalia	AgCenter Concordia Extension Service	Changes end date to 6/13/2025
Option Term #8 to State Lease #19-9975	AgCenter	Corpus Christ Church-Epiphany Catholic Church	AgCenter Extension Center Space	Change end date to 6/22/2025
Option Term 4 to State Lease #19-4756	AgCenter	Northeast Educational Development Foundation	AgCenter Rural Development Center	Changes end date to 6/30/2025

2023-2024

Document Type	Campus	Lessor or Seller or Assignor	Lessee or Buyer or Assignee	Related Agreements or Purpose
1st Amendment to CEA	HSCNO	HSCNO	LSU Health Foundation -New Orleans	use of Stanislaus Hall
Cooperative Endeavor Agreement	HSCNO	HSCNO	LSU Healthcare Network in New Orleans	Use of Seton Building
Cooperative Endeavor Agreement	HSCNO	HSCNO	LSU School of Med. in New Orleans Faculty Group Practice	Ambulatory Surgery Center
Extension 3 of Tsunami Use Agreement at Shaw Center	LSU	LSU	Chartwells	Restaurant
Exercise Option to Renew State Lease #19-10302	AgCenter	Town of Vidalia	AgCenter Concordia Extension Service	End date to 6/13/2024
Option Term # 7 to State Lease #19-9975	AgCenter	Corpus Christ Church-Epiphany Catholic Church	AgCenter Extension Center Space	Change end date to 6/22/2024

2022-2023

Document Type	Campus	Lessor or Seller or Assignor	Lessee or Buyer or Assignee	Related Agreements or Purpose
Option Term 3 to State Lease #19-4756	AgCenter	Northeast Educational Development Foundation	AgCenter Rural Development Center	Changes end date to 6/30/2024
Option Term # 6 to State Lease #19-9975	AgCenter	Corpus Christ Church-Epiphany Catholic Church	AgCenter Extension Center Space	Change end date to 6/22/2023
Request for approval to lease space through the State Office of Real Estate Lease	HSCS	Alzheimer's Resource Center & Dementia	The Center for Brain Health of LSU Health Shreveport	Approval to submit information needed for a State Lease of Clinic Space
Estoppel Certificate requested by Tulane and the Charity Developer	LSU	LSU Board of Supervisors & the REFF subsidiary	Tulane and the Charity Hospital Redevelopment LLC of Charity Hospital	Estoppel Agreement
Nicholson Gateway Apartments Sprinkler Phase 1 Release	LSU	LSU Board of Supervisors	The Lemoine Company	A receipt & release to allow insurance payment to The Lemoine Company for Phase 1 of work
Nicholson Gateway Apartments Sprinkler Phase 2 Release	LSU	LSU Board of Supervisors	The Lemoine Company	A receipt & release to allow insurance payment to The Lemoine Company Phase 2 of work
Outstanding Participation Agreements with Associated Insurance Certificates	LSU			
Request for JLCB Approval to Increase Construction Costs- LSU Innovation Park Roadway Improvements	LSU	LSU Board of Supervisors		Change Orders and Amendments to existing construction and design contracts
Subordination Agreement for W.S. Dock	LSU	LSU Board of Supervisors	W.S. Dock, LLC	Lessee's Lender's documents

**Report to LSU Board of Supervisors:
All Campuses Last 3 Years**

PM60 Projects \$75,000 to \$175,000

Updated September 16, 2024

2024-2025		AMOUNT APPROVED	FUNDS SOURCE	APPROVED BY	APPROVAL DATE
LSU	Alex Box Wall Padding Replacement 2024	\$350,000	Auxiliary & Other Funds	Exec. VP Lewis	09/02/24
	Student Union Lighting Control System Upgrade	\$130,000	Auxiliary Funds	Exec. VP Lewis	07/22/24
	Nicholson Hall Lot Improvements 2024	\$120,000	Auxiliary Funds	Exec. VP Lewis	07/18/24
	Tiger Stadium North & South Structural Preventative Maintenance 2024	\$81,000	Auxiliary Funds	Exec. VP Lewis	06/14/24
	Total LSU	\$681,000			
2023-2024		AMOUNT APPROVED	FUNDS SOURCE	APPROVED BY	APPROVAL DATE
LSU	Campus Wide Irrigation Controller Replacement	\$100,000	Other Funds	Exec. VP Lewis	06/04/24
	Carl Maddox Field House Boilers Replacement	\$125,000	Auxiliary Funds	Exec. VP Lewis	08/29/23
	Cub Complex McKernon Family Champions Wall	\$130,000	Other Funds	Exec. VP Lewis	05/30/24
	Evangeline Circle Horseshoe ADA Sidewalk & Site Improvements	\$125,000	Other: Facility Access Fee		07/11/23
	Football Indoor Practice Facility Video Board and Outdoor Sound Equipment Room	\$100,000	Auxiliary Funds	Exec. VP Lewis	04/10/23
	Howe Russell Parking Lot Electric Vehicle Chargers	\$100,000	Auxiliary Funds	Exec. VP Lewis	05/08/23
	Human Ecology Building Suite 140 Renovations	\$108,500	Other Funds	Exec. VP Lewis	08/14/23
	Life Sciences Building Room 610 Renovation	\$115,000	Operational Funds	Exec. VP Lewis	07/19/23
	Life Sciences Building: Lab 529 Renovations	\$110,000	Auxiliary Funds \$	Kimberly Lewis	10/17/23
	Nicholson Hall Room 260 Renovations	\$140,000	Operational Funds	Kimberly Lewis	05/08/24
	Skip Bertman Dr: Crosswalk Signage and Enhancements	\$100,000	Auxiliary Funds \$	Kimberly Lewis	01/22/24
	Tiger Stadium Lift Stadium Installation	\$90,239	Auxiliary Funds	Exec. VP Lewis	06/13/23
	Tiger Stadium North Stadium Plaza Renovations	\$100,000	Auxiliary Funds	Exec. VP Lewis	07/11/23
	TTEC: Conference Room Lighting Upgrades	\$120,000	Other Funds	Kimberly Lewis	10/17/23
	Total LSU	\$1,563,739			
LSUE	Manuel Hall Transformer Restoration Project	\$91,225	Operational Funds	Exec. VP Lewis	10/26/23
	Med Gas System-respiratory Labs PH 11	\$125,000	Building Use Fee	Exec. VP Lewis	10/23/23
	Med Gas System-respiratory Labs PH 1 reapproved	\$125,000	Grant-AWD-005611-GR-00014228	Exec. VP Lewis	11/09/23
	Total LSUE	\$341,225			

**Report to LSU Board of Supervisors:
All Campuses Last 3 Years**

PM60 Projects \$75,000 to \$175,000

Updated September 16, 2024

LSUS	Student Success Center Noel Memorial Library		\$130,026	Restricted Fees-Student Fees	Exec. VP Lewis	10/11/23
	BE-390 Classroom to office conversion		\$147,840	Self-Generated Funds-Bldg Use Fees	Exec. VP Lewis	06/11/24
	Total AgCenter		\$277,866			
AgCenter	Fiber Network Install		\$79,464	Sugar RS Facilities & Administration funds and the Sugar Research Station General Support Frant	Exec. VP Lewis	09/11/23
	Total AgCenter		\$79,464			
PBRC	Bldg B VAVs Metasys Modernication		\$156,000	Operational Funds	Exec. VP Lewis	01/09/24
	Replace ATS Switches		\$83,911	Other: Board of Regents Safety Funds	Exec. VP Lewis	01/30/24
	Total LSUE		\$239,911			
	Total All Campuses		\$2,502,205			

**Report to LSU Board of Supervisors:
All Campuses Last 3 Years**

PM60 Projects \$75,000 to \$175,000

Updated September 16, 2024

2022-2023		AMOUNT APPROVED	FUNDS SOURCE	APPROVED BY	APPROVAL DATE
LSU	Athletic Administration Bldg. Rm 225 Nutrition Ctr Renovations	\$115,000	Auxiliary Funds	Exec. VP Lewis	09/12/22
	Bernie Moore: Structural Preventative Maintenance	\$165,600	Ausillary Funds	Exec. VP Lewis	10/27/22
	Campus Wide Roadway Seal Coating Rebid	\$150,000	Other Ancillary Self Gen Revenue	Exec. VP Lewis	08/02/22
	Chemistry & Materials Bldg. Rm 168 Renovations	\$132,400	Other Ancillary Self Gen Revenue	Exec. VP Lewis	10/10/22
	Dalrymple Dr: Sidewalk, Drainage & Ramp Improvements	\$160,000	Other Ancillary Self Gen Revenue	Exec. VP Lewis	11/14/22
	Digital Media Center Cyber Security Modification for new Faculty	\$275,000	Other- LED Grant	Exec. VP Lewis	11/14/22
	First Transit Hub Renovation	\$145,000	Auxiliary Funds	Exec. VP Lewis	10/10/22
	Hatcher Hall 3rd Floor Renovations for AAAS	\$85,000	Operational Funds	Exec. VP Lewis	03/13/23
	Hatcher Hall 3rd Floor Renovations for AAAS revision	\$130,000	Operational Funds	Exec. VP Lewis	04/14/23
	Howe Russell Parking Lot Electric Vehicle Chargers	\$100,000	Auxiliary Funds	Exec. VP Lewis	05/08/23
	Law Center: Classroom Modifications for Podiums	\$87,000	Operational Funds	Exec. VP Lewis	03/13/23
	Life Sciences Annex: Suite A363 and A365 Renovation	\$150,000	Operational Funds	Exec. VP Lewis	01/10/23
	MDA Sidewalk & Ramp Improvement	\$110,000	Other: Facility Access Fee	Exec. VP Lewis	12/13/22
	Nicholson Hall 4th Floor Renovations	\$130,000	Operational Funds	Exec. VP Lewis	11/18/22
	PMAC South Plaza Drainage and Paving Improvements	\$150,000	Auxiliary Funds	Exec. VP Lewis	08/02/22
	South Quad Dr. Paving Repairs & Sidewalk Imrprovements	\$120,000	Other Ancillary Self Gen Revenue	Exec. VP Lewis	08/02/22
	SVM East Lot ADA Parking, Sidewalk, Drainage Improvements	\$100,000	Auxiliary Funds	Exec. VP Lewis	08/02/22
	SVM: Main Bldg Library Renovations for Conference Room	\$147,250	Operational Funds	Exec. VP Lewis	03/20/23
	Thomas Boyd Hall: 156 & 156A	\$78,000	Operational Funds	Exec. VP Lewis	12/13/22
	Thomas Boyd Hall: 156 & 156A revision	\$105,000	Operational Funds	Exec. VP Lewis	04/24/23
	TTEC: Auditorium Lighting Replacement	\$90,000	Other: LA DOTD Funds	Exec. VP Lewis	11/14/22
	UREC: Softball Playing Surface Repaairs	\$75,000	Auxiliary Funds	Exec. VP Lewis	10/10/22
	Total LSU	\$2,800,250			
AgCenter	Aquaculture Implement Shed Expansion	\$79,920	Operational Funds	Exec. VP Lewis	12/01/22
	Total AgCenter	\$79,920			
LSUA	Facility Services Fencing Project	\$135,000	Operational Funds	Exec. VP Lewis	05/05/23
	Total LSUA	\$135,000			

**Report to LSU Board of Supervisors:
All Campuses Last 3 Years**

PM60 Projects \$75,000 to \$175,000

Updated September 16, 2024

LSUS	Baseball Outfield Regrading		\$156,676	Auxiliary Funds	Exec. VP Lewis	04/14/23
	Physical Plant Roof Replacement increased cost of low bid		\$104,975	Operational Funds	Exec. VP Lewis	08/10/22
	Science Building Utilities Relocate		\$80,000	Supplementation Appropriation Act 170 of 2022	Exec. VP Lewis	05/25/23
	Student Success Center Advising Area		\$1,430,229	Operational Funds	Exec. VP Lewis	05/17/23
	University Center AHU #3 Replacement		\$78,100	Operational Funds	Exec. VP Lewis	06/30/22
	Total LSUS		\$1,849,980			
HCS D	Lallie Kemp Helipad		\$133,164	Other- Covid-19 ARP Rural Funds	Exec. VP Lewis	09/07/22
	Total HCS D		\$133,164			
	Total All Campuses		\$4,863,314			

**Report to LSU Board of Supervisors:
All Campuses Last 3 Years**

PM60 Projects \$75,000 to \$175,000

Updated September 16, 2024

2021-2022		AMOUNT APPROVED	FUNDS SOURCE	APPROVED BY	APPROVAL DATE
LSU	459 Commons AHU 3 & 4 Chilled & Heating Water Coil Replacement	\$88,964	Auxiliary Funds	Exec. VP Lewis	05/13/22
	Alpha Phi Flooring Renovations	\$80,000	Auxiliary Funds	Exec. VP Lewis	05/24/22
	Braille Signage: Interior ADA Wayfinding Multiple Buildings	\$100,000	Ancillary S-G Funds- Facility Access Fee	Interim Exec. VP Torres	10/19/21
	Design Building Deck Project 2021	\$60,000	Self-Gen: Funds from Alumni donations	Interim Exec. VP Torres	12/20/21
	ECA Activities Building: Interior Painting	\$125,000	Auxiliary Funds	Exec. VP Lewis	02/11/22
	Exterior ADA Building Ramps-Multiple Buildings	\$158,000	Ancillary Self-Gen Funds- Facility Access Fee	Interim Exec. VP Torres	11/03/21
	Hill Farm-Sweet Potato Farm Renovations	\$75,000	S-G: Donor Money-Hill Farm Teaching Facility & Newsom Gardens Project Fund	Interim Exec. VP Torres	11/03/21
	Hodges Hall B16, B16B, B16C, B22 Renovations	\$75,000	Operational Funds	Exec. VP Lewis	04/13/22
	Jesse Coates Hall 3rd Floor Laboratory Lighting	\$75,000	Operational Funds	Exec. VP Lewis	05/05/22
	Life Sciences Bldg: Basement Suite B24- Rms 24A, 24B, 24C & 24D Lab	\$97,605	Operational Funds	Interim Exec. VP Torres	12/10/21
	Life Sciences Bldg: Rooms 387, 387A & 387B Lab Renovations	\$103,000	Operational Funds	Interim Exec. VP Torres	12/01/21
	Music Building Hurricane Ida Roof Repair	\$145,000	Insurance Claim	Interim Exec. VP Torres	10/19/21
	Stephenson Veterinary Hospital Landscape & Irrigation Installation	\$140,000	Self Gen-allocated in Stephenson Veterinary Hospital construction budget	Exec. VP Lewis	03/15/22
	Student Union Suite 109 Renovations for PTS	\$1,000,000	Auxiliary Funds	Exec. VP Lewis	06/14/22
	Student Union: Room 188 Renovation for ITS	\$105,000	Operational Funds	Exec. VP Lewis	05/05/22
	SVM Main Building Access Control System Replacement	\$120,000	Operational Funds	Exec. VP Lewis	03/15/22
	SVM Room 2536, 2538, 2538A Lab Renovations budget increase from \$115,000	\$165,000	Operational Funds	Interim Exec. VP Torres	07/06/21
	SVM: 2202, 2202A, 2203 Casework Installation/Lab Renovations	\$128,000	Operational Funds	Interim Exec. VP Torres	01/13/22
	Tiger Stadium Turf Replacment 2022	\$125,000	Other- allocated for replacement after concener	Exec. VP Lewis	03/15/22
	Total LSU	\$2,965,569			

**Report to LSU Board of Supervisors:
All Campuses Last 3 Years**

PM60 Projects \$75,000 to \$175,000

Updated September 16, 2024

2021-2022	AMOUNT APPROVED	FUNDS SOURCE	APPROVED BY	APPROVAL DATE
-----------	--------------------	--------------	-------------	------------------

**Report to LSU Board of Supervisors:
All Campuses Last 3 Years**

Property Leases

Updated September 16, 2024

2024-2025													
Campus	Lessor or Sublessor	Lessee or Sublessee	Location	Lease Purpose	BoS Appr.	Start	Lease Term	Sq. Ft.	Annual Rental	Dollars / SF	Terms left	Length	Approved by
LSU	University House L3C	LSU BoS	188 South Lakeshore Drive.	Presidential Residence and event & activities space.	06/28/24	07/01/24	07/01/34	n/a	Maintenance & operation, utilities, insurance but no \$\$s.	n/a	2	10-year	President Tate
LSU	Ion Housing	LSU BoS for Residential Life		Residential housing		08/14/24	05/10/25	46,746	\$1,000,809.00	\$111,201	0	\$0	President Tate
2023-2024													
Campus	Lessor or Sublessor	Lessee or Sublessee	Location	Lease Purpose	BoS Appr.	Start	Lease Term	Sq. Ft.	Annual Rental	Dollars / SF	Terms left	Length	Approved by
HSCNO	HSCNO	ULM College of Pharmacy	New Orleans	Interagency Lease for Office space	n/a	12/01/23	11/30/28	3,872	\$67,760.04	\$17.50	1	3-yrs	President Tate
AgCenter	AgCenter	Patout Brothers Farms	Iberian Research Station	Agricultural purposes	n/a	02/01/24	01/30/29	372.34 acres	\$65,159.00	n/a	3	1-yr	President Tate
AgCenter	AgCenter	Town of Vidalia	Vidalia	Extension Service	n/a	06/13/23	06/12/24	1,393	\$10,000.00		4	1-yr	President Tate
AgCenter	AgCenter	Bryan Galley	Rosepine Research Station	Agricultural purposes	03/04/22	08/17/23	08/16/28		\$25,000.00	n/a	1	5-yrs	President Tate
2022-2023													
Campus	Lessor or Sublessor	Lessee or Sublessee	Location	Lease Purpose	BoS Appr.	Start	Lease Term	Sq. Ft.	Annual Rental	Dollars / SF	Terms left	Length	Approved by
HSCNO	LSU BoS	City of New Orleans		Lease of Airspace in New Orleans between the HSCNO Center for Advanced Learning & Simulation & the Clinical Science Research Building		09/15/22	50 years	11' wide & 53' long about 20' 10" above S. Prieur Street	\$5,130 2022-26, increasing every 4 years		8		President Tate
LSU	LSU BoS	Phi Kappa Theta at LSU House Corporation'	Lot 12 Frternity Row	Amendment & Restatement of Lease, Phi Kappa Theta at LSU of former Sigma Alpha Mu Fraternity House		06/17/22	Thru 6/16/2054		\$10.00				President Tate

**Report to LSU Board of Supervisors:
All Campuses Last 3 Years**

Schematic Design

Updated September 16, 2024

2024-2025				
Campus	Project	Architect	Approved by	Approval Date
AgCenter	Burden Welcome Center	Eskew Dumez Ripple	LSU Board of Supervisors	06/28/24
LSU	Delta Gamma Sorority House	Eskew Dumez Ripple	LSU Board of Supervisors	04/26/24
LSU	Delta Zeta Sorority House	Cline Design Associates	LSU Board of Supervisors	09/06/24
2023-2024				
Campus	Project	Architect	Approved by	Approval Date
	n/a			
2022-2023				
Campus	Project	Architect	Approved by	Approval Date
	TAF Lease and Schematic Design of Renovated & Expanded Football Operations Building		LSU Board of Supervisors	10/21/22

**Report to LSU Board of Supervisors:
All Campuses Last 3 Years**

Servitudes

Updated September 16, 2024

2024-2025								
Campus/Lessor	Lessee	Servitude or Right-of-Way Location	Acreage	Payment	Length of Term	Type of Document	Approved by	Approval Date
AgCenter	Iberville Parish	Water Line Servitude & Temporary Construction Permit	dna	dna	in perpetuity & up to 1 yr. for construction	Servitude & Temporary Construction Permit	William F. Tate IV	6/13/2024
2023-2024								
Campus/Lessor	Lessee	Servitude or Right-of-Way Location	Acreage	Payment	Length of Term	Type of Document	Approved by	Approval Date
AgCenter-Red River Research Station	Caddo-Bossier Parishes Port Commission	Sections 31 & 32, Township 17, Range 12 West, Bossier Parish	3.292 acres	\$40,000.00	In perpetuity	Servitude	William F. Tate IV	5/24/2023
HSCNO	Cox Communications	Lot 8A-3, Sq. 468 1st District, New Orleans	0.069 acres	\$162,270.00	99 year	Right of Use Servitude	William F. Tate IV	11/27/2023
LSU	EXXONMOBIL	Innovation Park, Baton Rouge	dna	dna	dna	dna	William F. Tate IV	11/11/2023
AgCenter-Northeast Research Station	Entergy Louisiana, LLC (requested by Corps Of Engineers)	Northeast Research Station, Tensas Parish	Corps requested Entergy to move power line from base of levee to main highway along Hwy 604 & 606			Right of Way	William F. Tate IV	10/11/2023
AgCenter, Iberville Parish	Manchac Holdings 2023, LLC	Land locked property at Nicholson Drive/La Hwy 30	Grants Grantee access to the access road		99 years	Servitude and Right of Passage Agreement	William F. Tate IV	11/27/2023
2022-2023								
Campus/Lessor	Lessee	Servitude or Right-of-Way Location	Acreage	Payment	Length of Term	Type of Document	Approved by	Approval Date
LSU	Entergy	New Medical School Housing, New Orleans			In perpetuity	Right-of-Way to run power	William F. Tate IV	5/13/2022
ExxonMobil Pipeline Co.	LSU	St. Gabriel, Iberville Parish			In perpetuity	Right-of-way to construct water pipeline to new firing range	William F. Tate IV	4/28/2022